

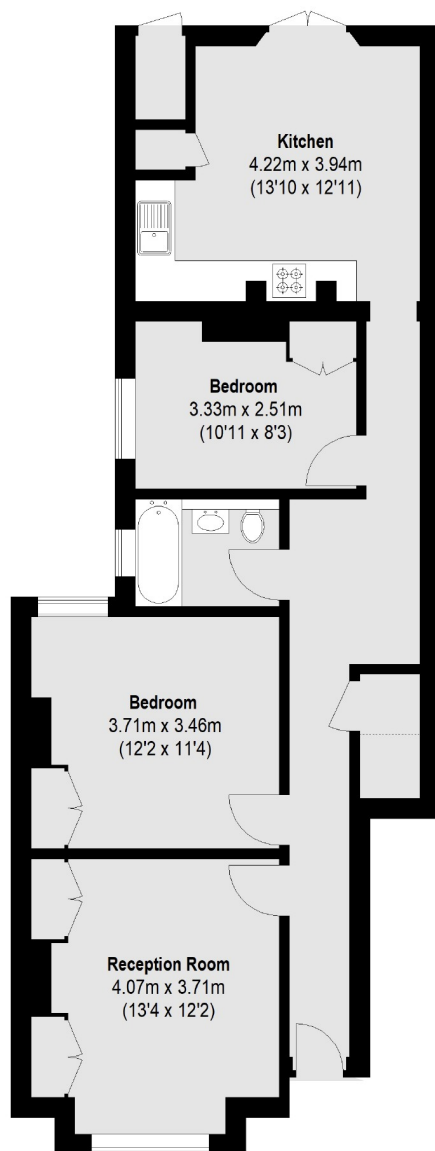


Trevelyan Road, SW17

£650,000

A beautifully presented two bedroom ground floor Victorian maisonette on one of Tooting's most sought after streets. Measuring almost 800 square feet, this property offers great living space, with a front reception room and a kitchen/diner at the rear, leading out to the spacious private garden. This lovely maisonette also has the added benefit of a share of the freehold.

- Two Bedrooms
- Ground Floor
- Victorian Maisonette
- Private Garden
- Great Specification
- Desirable Location

**Ground Floor**

Total area (approx.): 72.85 sq. m (784 Sq. ft)

Jacksons Tooting
26 Tooting Bec Road
London
SW17 8BD
020 8767 0522
tooting.sales@jacksonsestateagents.com

Energy Rating: We aim to make our particulars both accurate and reliable. However they are not guaranteed; nor do they form part of an offer or contract. If you require clarification on any points then please contact us, especially if you're traveling some distance to view. Please note that appliances and heating systems have not been tested and therefore no warranties can be given as to their good working order.