



## Dartmouth Road, NW2

### TO LET - £2,100 Per Month

AVAILABLE TO RENT IMMEDIATELY, is this Top Floor loft style, two double bedroom apartment situated within the heart of the highly desirable Mapesbury Conservation Area.

Spanning over 850 sq ft of accommodation that includes a sizeable reception/dining room offering built-in shelving, and some original features (including cast iron fireplaces and original wood flooring). The kitchen has fitted appliances and still retains the original serving hatch from this period property. Both bedrooms have built-in storage including fitted wardrobes.

Located close to Willesden Green (Jubilee - Zone 2) station and the many local amenities of the area. Gladstone Park and the Mapesbury Dell are all within walking distance.

- Top Floor, two bedroom apartment
- Large reception room
- Galley style kitchen
- Original period features
- COUNCIL: Brent (D)
- DEPOSIT: £2,596

020 8450 9377

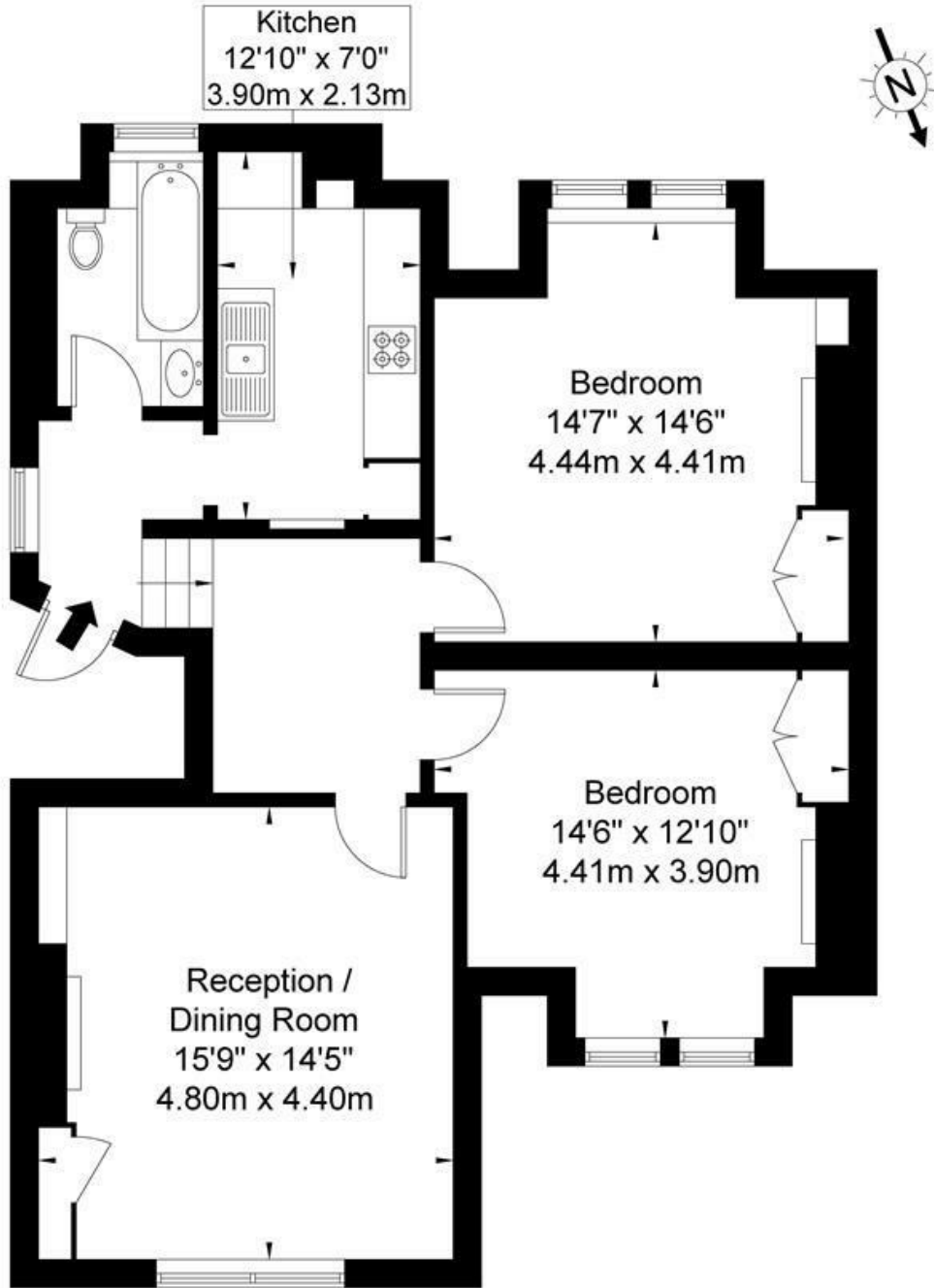
[rentals@cameronsstiff.co.uk](mailto:rentals@cameronsstiff.co.uk)

[cameronsstiff.co.uk](http://cameronsstiff.co.uk)



## Dartmouth Road, NW2

Approx Gross Internal Area = 79.8 sq m / 858 sq ft



Second Floor

The Floor plan is not to scale and measurements and areas shown are approximate and therefore should be used for illustrative purposes only. The plan has been prepared in accordance with the RICS code of Measuring Practice and whilst we have confidence in the information produced it must not be relied on. If there is any aspect of particular importance, you should carry out or commission your own inspection of the property.

EPC: E

Ref: 18777244

