



## Hill View Road, Oxford

£700,000 3 Bedroom House



A well presented bay fronted character home located in this popular turning off the Botley Road. Close to transport links and local shops.

- 4 bedrooms
- En suite and main bathroom
- Separate living room and wood burner
- Open-plan kitchen/ dining room
- Private rear garden
- Convenient access to Oxford city centre

**Freehold**

**Lease: N/A**

**Service Charge: N/A**

**Ground Rent: N/A**

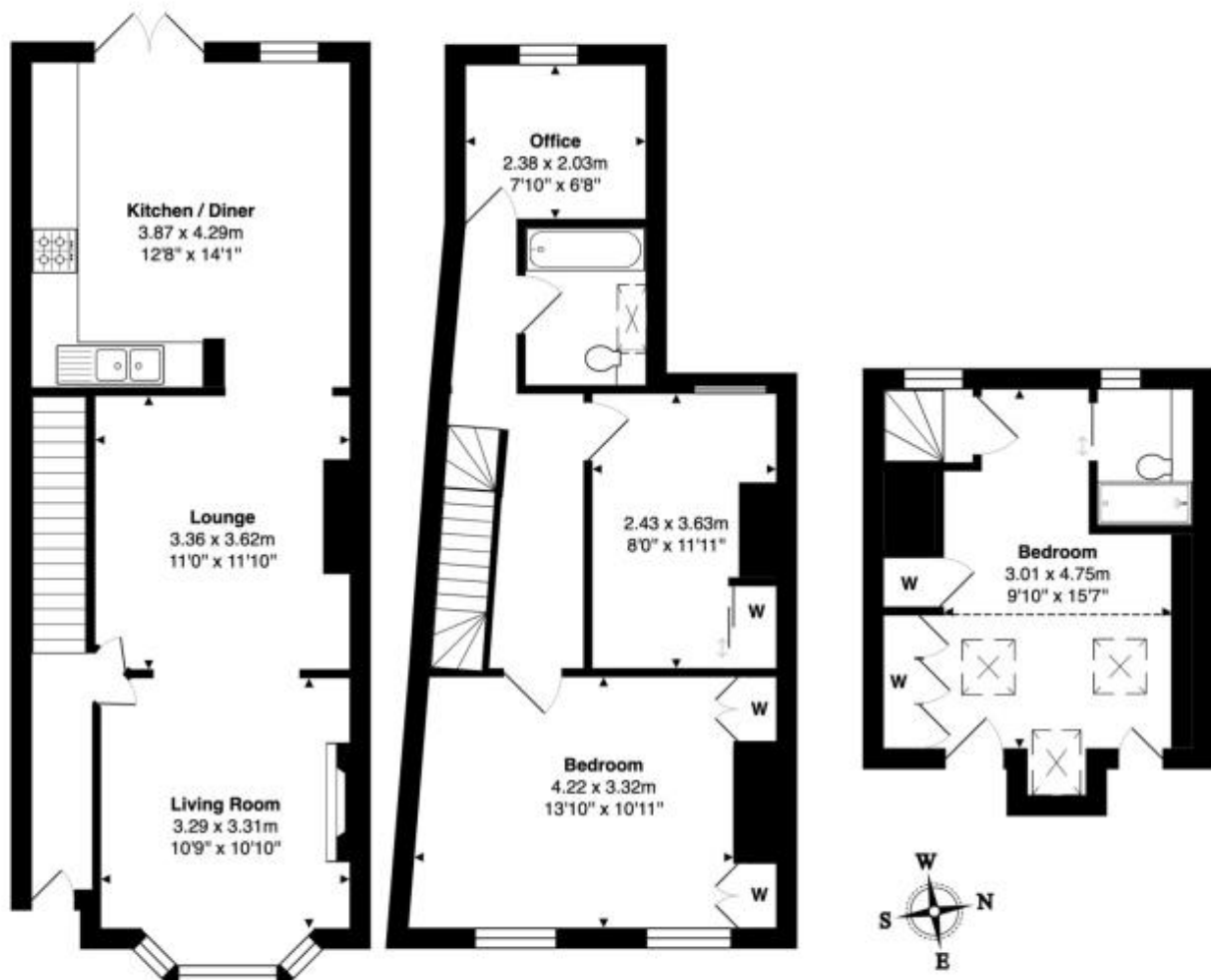
**Contact: 01865 302314**

**Website Ref: P139996**

**Inspired**   
Sales & Acquisitions  
FindersKeepers™



EPC rating: C  
 Parking: On-street (free)  
 Council tax: Oxford District (B),  
 Band E  
 Locality: Town/City  
 Motorway: M40 - J9  
 Train: Oxford



Approx. Gross Internal Area: 111.3 m<sup>2</sup> ... 1198 ft<sup>2</sup>

Whilst every attempt has been made to ensure the accuracy of the floor plan contained here, measurements of doors, windows, rooms, and any other items are approximate. No responsibility is taken for any error, omission, or mis-statement. This plan is for illustrative purposes only and should be used as such.  
 Drawn by E8 Property Services. [www.e8ps.co.uk](http://www.e8ps.co.uk)