



## West Lane, SE16

£400,000

 2  1  1  E

- Lovely View of the Shard
- Separate Lounge
- Easy Access to the City
- Large Windows
- Natural Light
- Chain Free



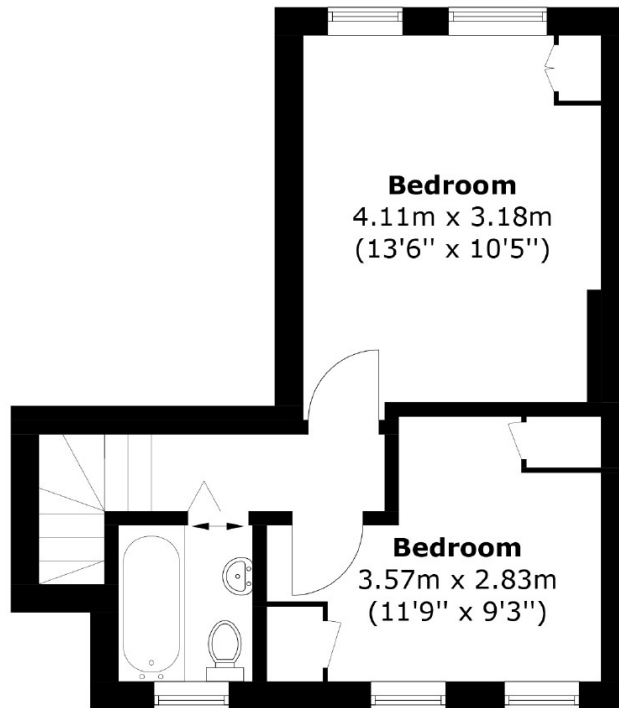


This well-presented and spacious two-bedroom duplex offers comfortable living with plenty of potential. Featuring a generously sized living area, a separate kitchen and natural light. Conveniently located close to a plethora of shops, amenities, and excellent transport links.

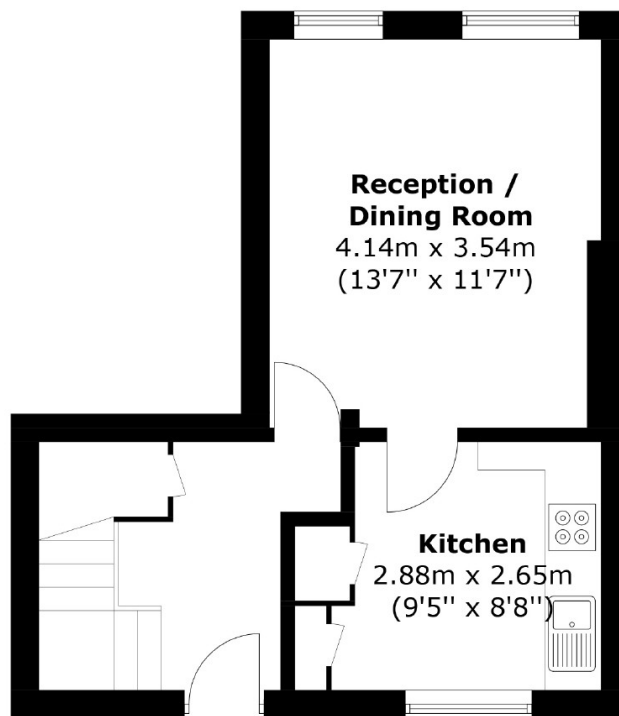
Ideal for commuters, this property offers convenient access to both rail and bus services, with Bermondsey Station just 0.2 miles away and Rotherhithe Station 0.5 miles away, you have easy access to the City.







### Third Floor



### Second Floor

Total area: Approx. 59.7 sq. meters (642.6 sq. feet)

35A Wapping High Street,  
London, E1W 1NR  
020 7702 3456  
ea2group.com