



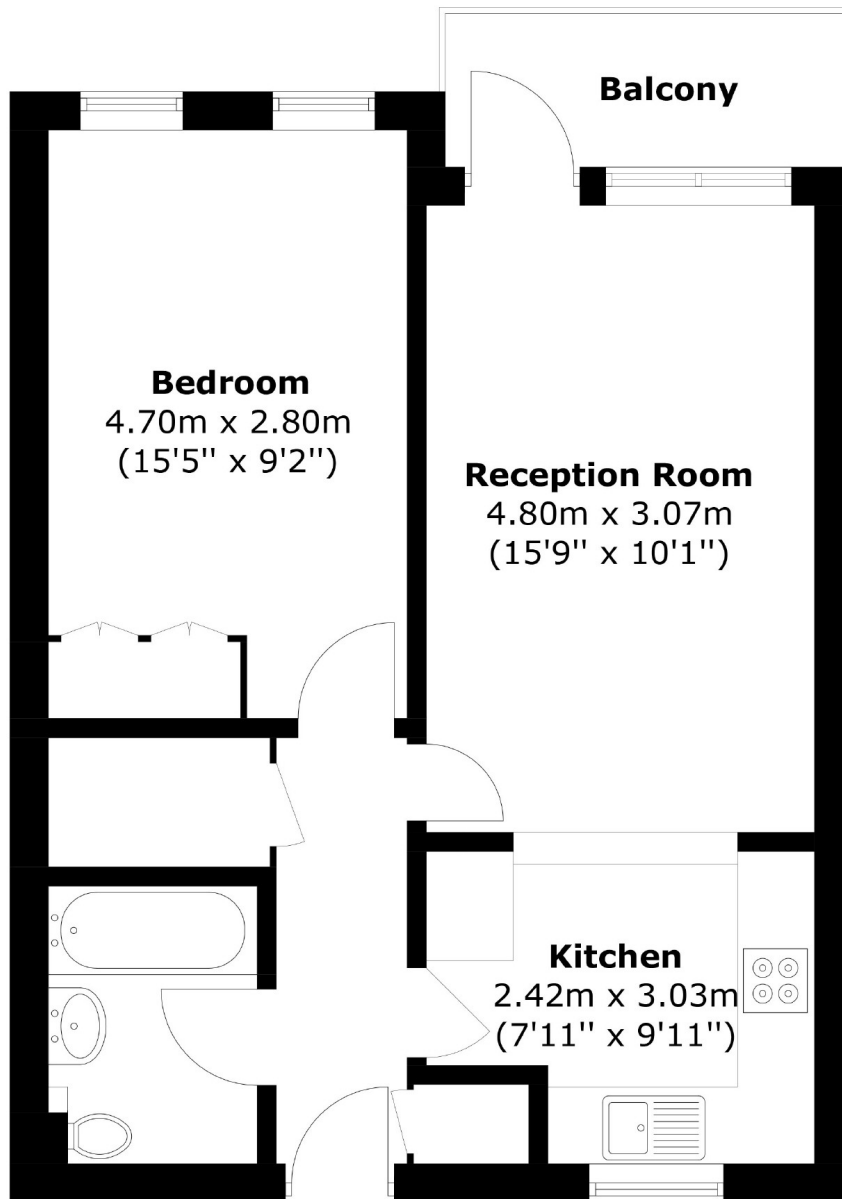
Thomas More Street, E1W

£507 pcm

A well-presented one bedroom property located in Nightingale House. This property offers wood flooring throughout, open plan living, a private balcony and access to a private parking space. Heating and hot water bills are also included. Energy Rating: .

Ideally located next to St Katharine's Docks with a wide selection of pubs, bars, restaurants and cafes nearby. Only a short walk from Tower Hill stations, DLR links, Wapping Overground Station for an easy access to the City, London Bridge and Canary Wharf.

One Bedroom, One Bathroom, Balcony, Heating & Hot Water Included, St Katherine's Dock, Private Parking



Total area: Approx. 46.7 sq. meters (502.7 sq. feet)
Plus balcony, approx. 3.7 sq. meters (39.8 sq. feet)

ea2
35a Wapping High Street,
London, E1W 1NR
020 7702 3456
lettings@ea2group.com

Energy Rating: We aim to make our particulars both accurate and reliable. However they are not guaranteed; nor do they form part of an offer or contract. If you require clarification on any points then please contact us, especially if you're travelling some distance to view. Please note that appliances and heating systems have not been tested and therefore no warranties can be given as to their good working order.

ea2group.com