



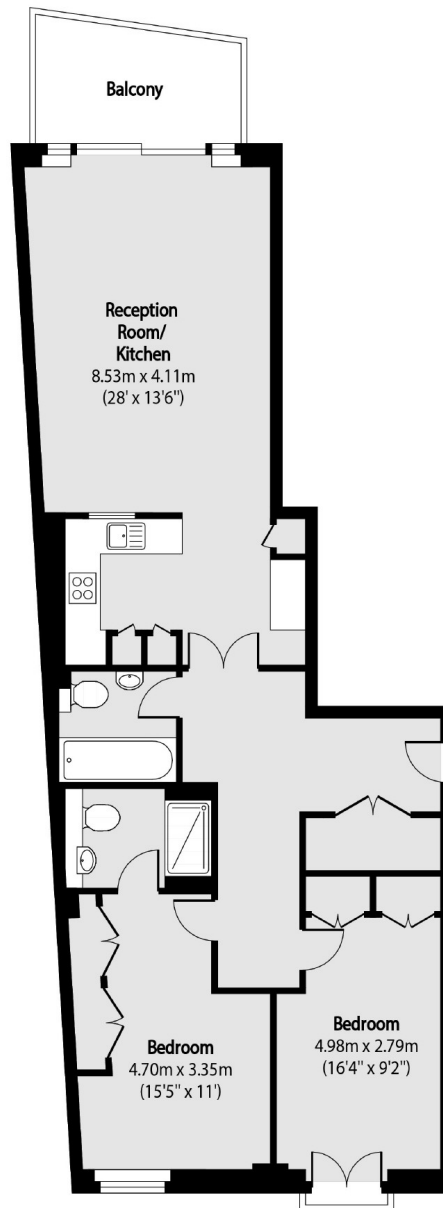
## Wapping High Street, E1W

£750 pcm

A well-presented two double bedroom, two bathroom property in the popular Capital Wharf building. This property offers wood flooring throughout, newly renovated kitchen, balcony and uninterrupted views of The River Thames. The building also offers access to a 24hr concierge, residents gym and private parking. Energy Rating: .

Capital Wharf is ideally located close to St Katharine's Docks and Tower Hill stations. Close to all local amenities and walking distance from the City and Canary Wharf. Amazing Views of the River Thames and towards Tower Bridge.

Two Double Bedroom, Two Bathroom, Balcony, Direct River Views, 24hr Concierge, Residents Gym



Total area (approx): 87.48 sq m (942 sq. ft)

Balcony total area (approx): 6.83 sq m (74 sq. ft)

ea2  
35a Wapping High Street,  
London, E1W 1NR  
020 7702 3456  
[lettings@ea2group.com](mailto:lettings@ea2group.com)

Energy Rating: We aim to make our particulars both accurate and reliable. However they are not guaranteed; nor do they form part of an offer or contract. If you require clarification on any points then please contact us, especially if you're travelling some distance to view. Please note that appliances and heating systems have not been tested and therefore no warranties can be given as to their good working order.

[ea2group.com](http://ea2group.com)