



Wapping High Street, E1W

£1,095,000

 2  1  2  B

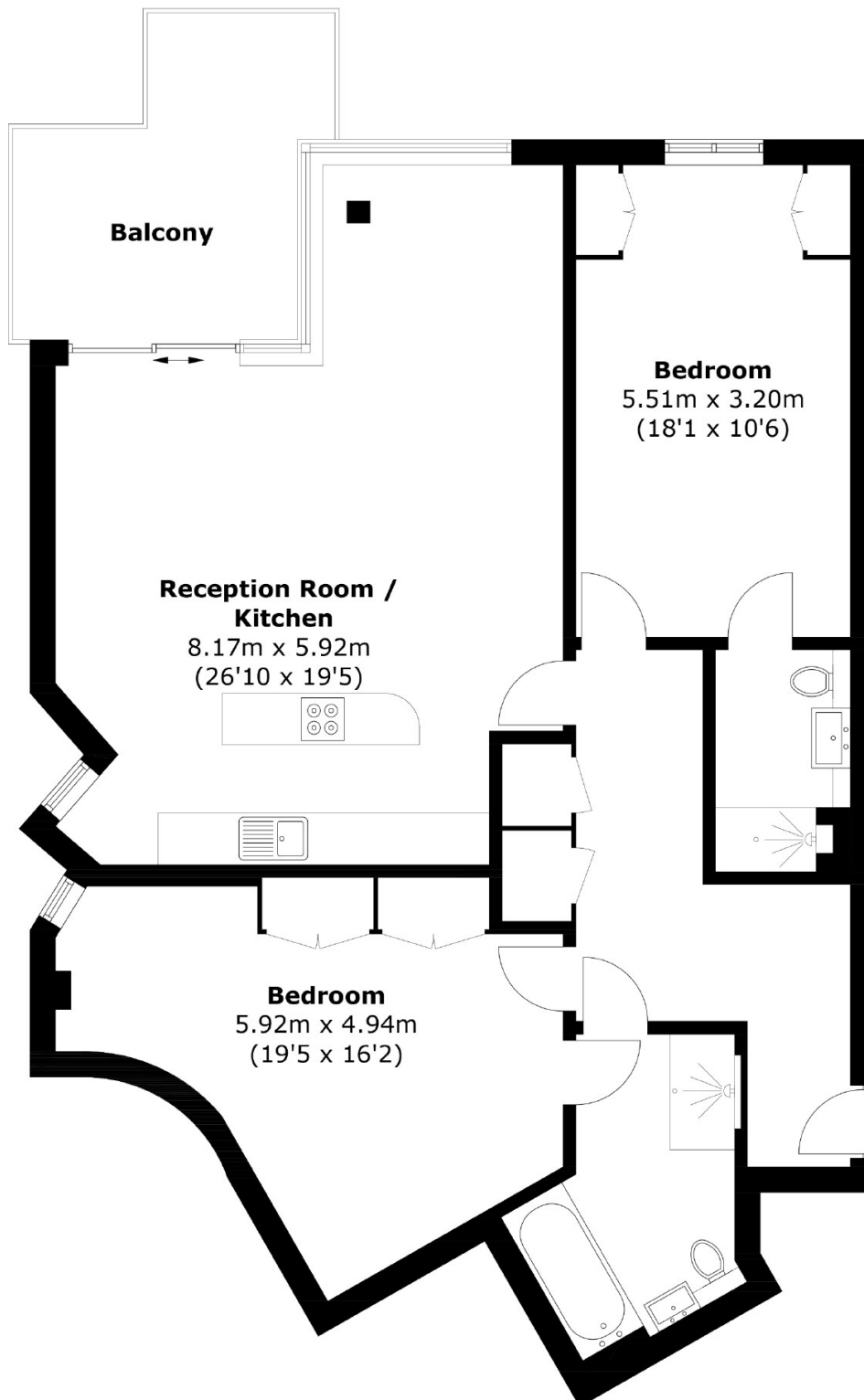
- Corner apartment
- River Views
- 1,138.8 sq ft
- 2 Bedrooms
- 2 En Suites
- Private Balcony



A Rare Corner Riverside Apartment in Wapping Spacious, Serene & Unrivalled Views. Occupying 1,138.8 sq ft within the prestigious Grade II listed Marc Brunel House, this exceptional two-bedroom, two-bathroom corner apartment is a rare opportunity to experience riverside living at its finest in one of London's most historic and desirable locations.

Location-wise, it doesn't get more convenient: Wapping Station is literally a few steps away, with direct routes into the City and Canary Wharf in under 15 minutes. Despite its excellent connectivity, the area retains a uniquely peaceful and village-like charm, perfect for those seeking a calmer side of central London living. A short walk from St Katharine Docks, Tower Bridge, and the Thames Path, the area is rich in local eateries, historic pubs, and the all important independent coffee shop on your door step





Total area: Approx. 105.8 sq. meters (1138.8 sq. feet)
Balcony area: Approx. 11.2 sq. meters (120.5 sq. feet)

35A Wapping High Street,
London, E1W 1NR
020 7665 5589
ea2group.com