



**Biggin Hill, SE19**

**£675,000**

A beautifully presented and extended family home offering four bedrooms, two bathrooms and large openplan family living. Energy rating: D



Having been updated and extended, the accommodation comprises a wonderful, bright openplan living room leading to the family kitchen, a conservatory and guest w.c. To the first floor are three bedrooms and a four piece family bathroom, with a principle suite located in the loft extension.

Biggin Hill is one of the most sought after roads in South Norwood, just 1 Mile from Norwood Station. This quiet residential road is also only a short distance from both Streatham Common and Norwood Park.

Four Bedrooms, Two Bathrooms, Excellent condition, Openplan living, Chain free, EPC



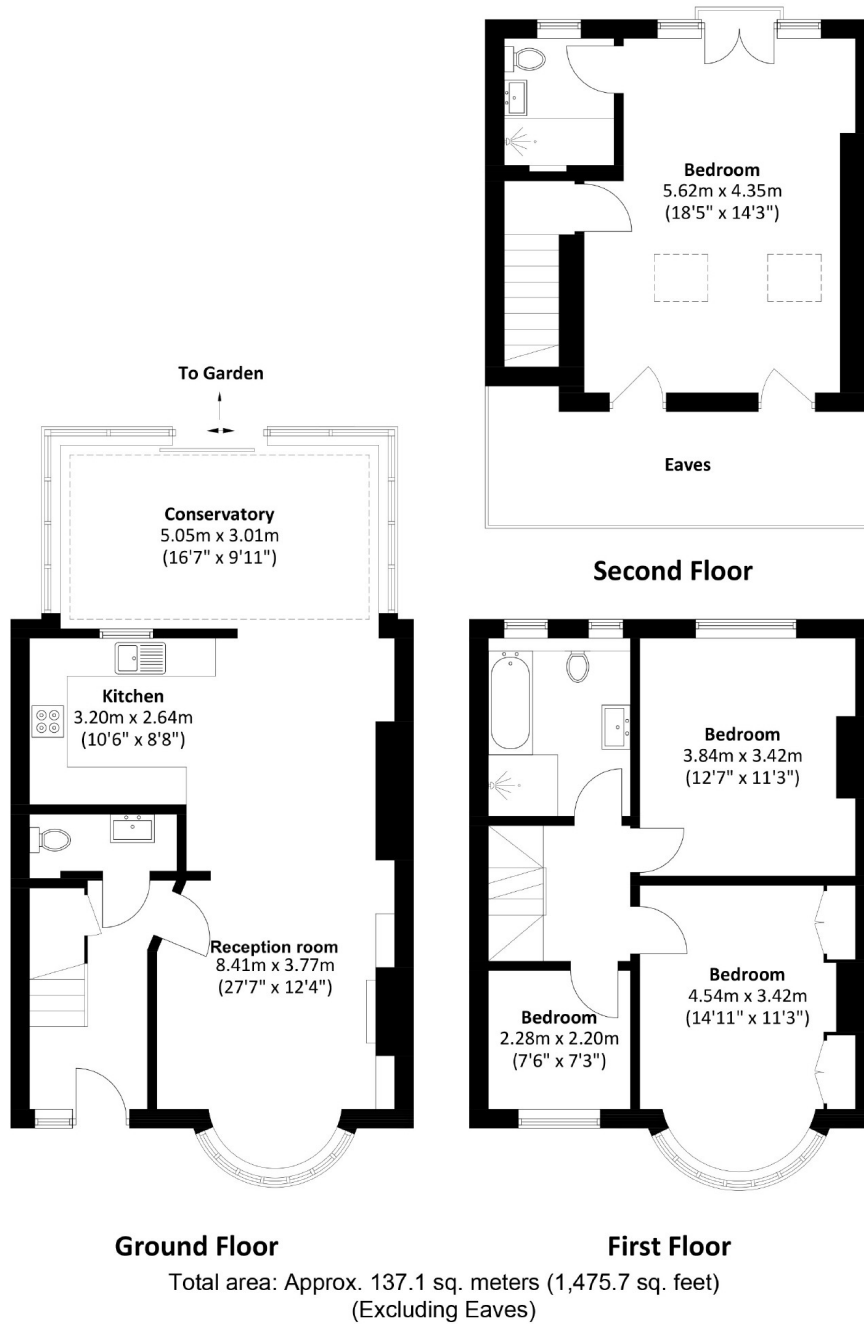












James Alexander  
1341 London Road,  
Norbury, SW16 4BE  
020 8629 8028  
norburysales@jamesalexander.com

Energy Rating: D We aim to make our particulars both accurate and reliable. However they are not guaranteed; nor do they form part of an offer or contract. If you require clarification on any points then please contact us, especially if you're travelling some distance to view. Please note that appliances and heating systems have not been tested and therefore no warranties can be given as to their good working order.