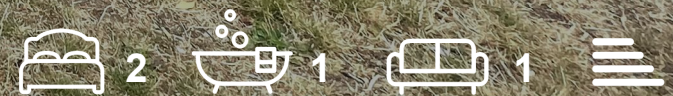


ALLDAY
& MILLER

Berkeley Close, Ruislip, HA4 6LE
£1,750 Per month





Berkeley Close, Ruislip, HA4 6LE

£1,750 Per month

- Two Double Bedroom Maisonette
- Rear Garden
- Wood Flooring
- Smart Bathroom
- First Floor
- Balcony
- Newly Fitted Smart Kitchen
- Ruislip Garden Station (Central Line)

Description

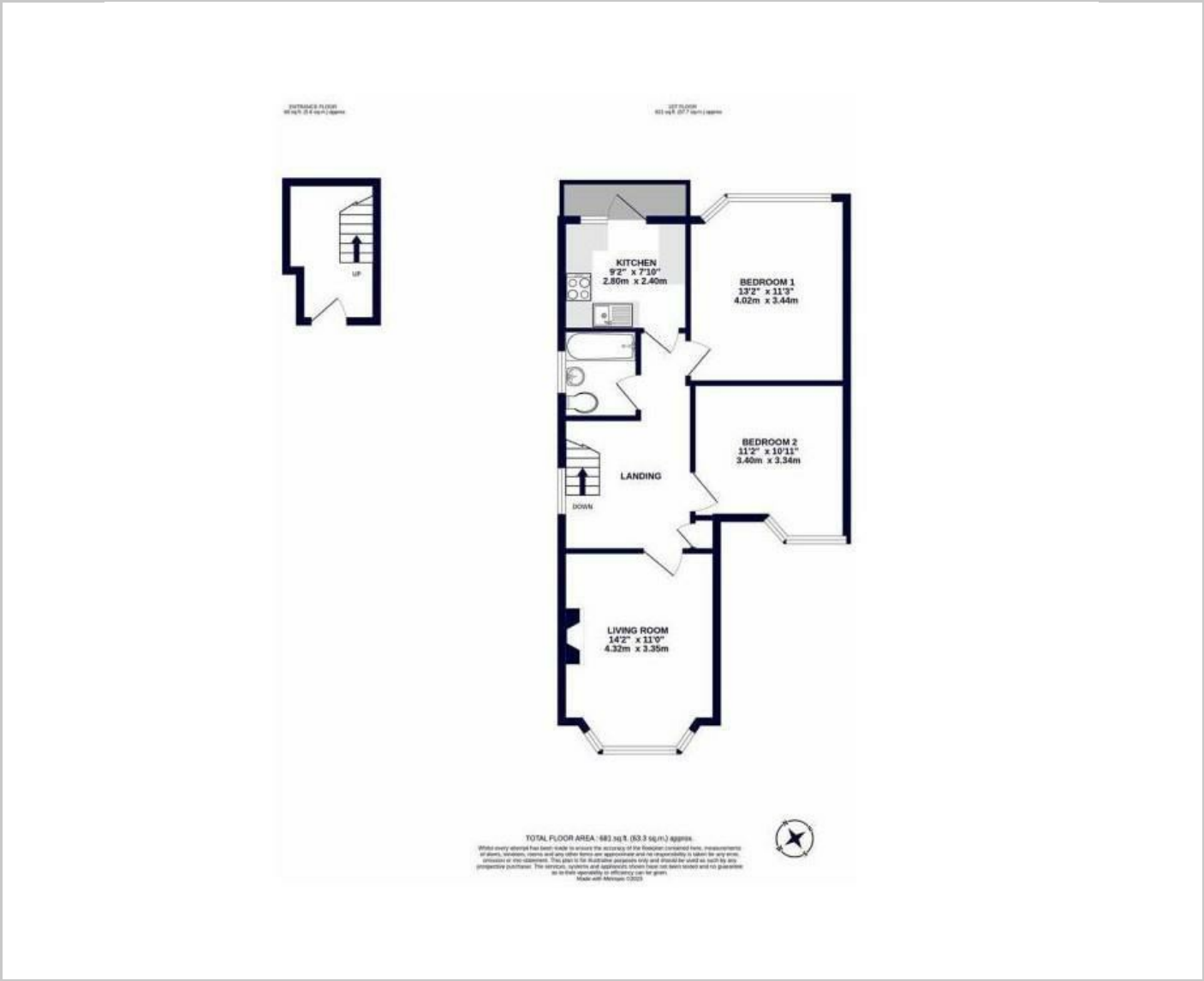
This attractive two-bedroom maisonette is meticulously maintained and ideally situated just a short stroll from Ruislip Garden Station (Central Line), with Ruislip High Street and its abundance of shops, restaurants, and amenities just a little further away. The spacious first-floor maisonette includes an entrance hallway, landing, generous reception room, two double bedrooms, a modern bathroom, and a fitted kitchen. Additionally, there is a charming small balcony adjacent to the kitchen. The property also benefits from a private rear garden.

Situation

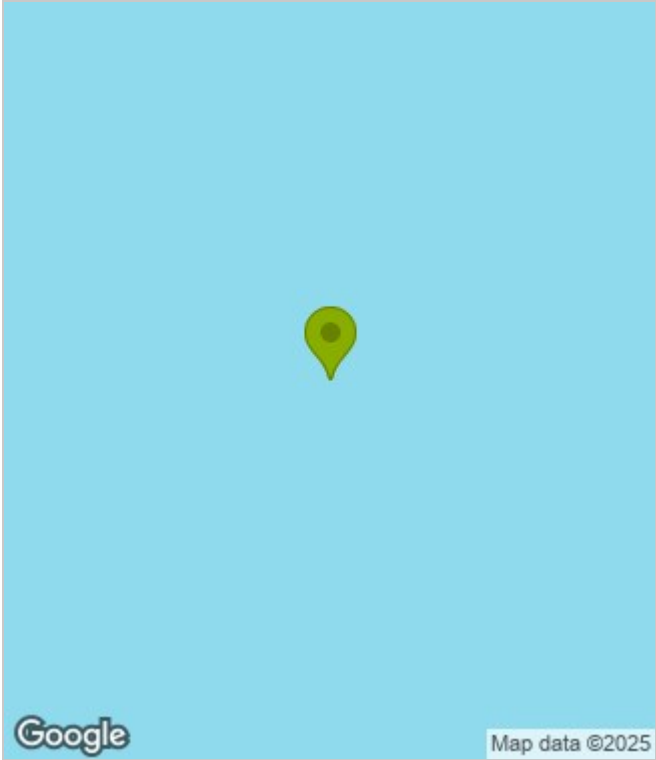
Berkeley Close is set in a quiet cul-de-sac in the heart of Ruislip, offering a peaceful residential atmosphere with excellent transport links. Just a short walk to Ruislip Gardens (Central Line) and Ruislip or Ruislip Manor stations (Metropolitan and Piccadilly Lines), the area is ideal for commuters. Nearby Ruislip High Street provides a great mix of shops, cafes, and restaurants, while Ruislip Woods and Manor Farm offer green open spaces and community events. The area is popular with families, thanks to outstanding local schools and a safe, friendly environment, making it a sought-after location.



Floor Plans



Area Map



Energy Performance Graph



These particulars, whilst believed to be accurate are set out as a general outline only for guidance and do not constitute any part of an offer or contract. Intending purchasers should not rely on them as statements of representation of fact, but must satisfy themselves by inspection or otherwise as to their accuracy. No person in this firms employment has the authority to make or give any representation or warranty in respect of the property.