

ALLDAY
& MILLER

Noel Coward Avenue, Uxbridge, UB9 5FN
£770,000

4 2 2 B



Noel Coward Avenue, Uxbridge, UB9 5FN

£770,000

- Four Bedroom
- Sleek Open Plan Kitchen Diner
- Luxurious Master Bedroom with Ensuite
- High Specification Throughout
- Downstairs W.C
- Two Modern & Contemporary Bathrooms
- Private Garden, Large Terrace & Balcony
- Town House
- Garage Via Own Driveway
- Off Street Parking for Two Cars

Description

This stylish accommodation comprises of a welcoming entrance hallway impressive kitchen/breakfast room with a wide range of integrated appliances, guest cloakroom and integral garage, the ground floor also benefits from heated flooring. To the first floor is the main reception/dining room that has access to a spacious terrace, the second floor comprises three bedrooms and a contemporary shower room. To the top floor is the master bedroom with luxurious en-suite bathroom and private balcony.

Residents and their guests benefit from luxuriously-restored cinema, where legendary Hollywood directors such as Steven Spielberg and Stanley Kubrick once sat to watch their films and the adjoining bar. The Denham film Concierge service is available 7 days a week

Outside

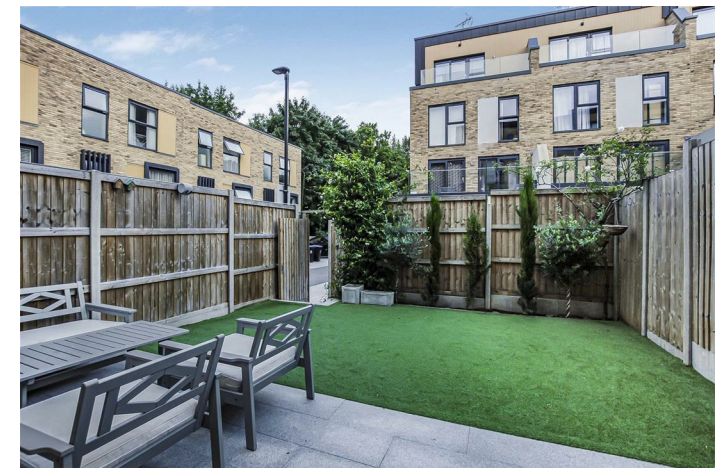
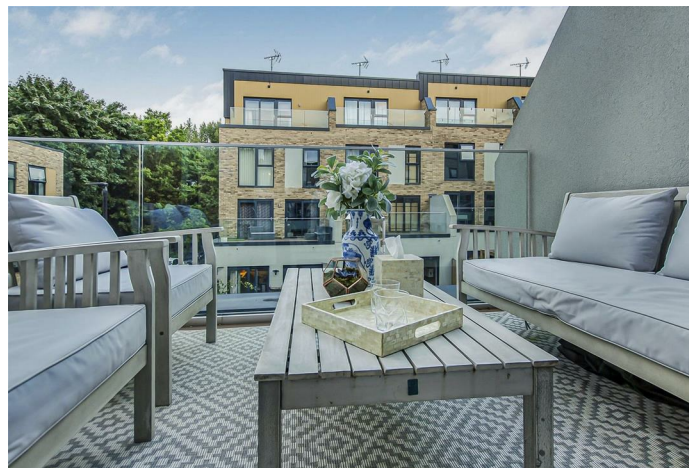
There is a garage that can be approached via an own driveway with additional parking for two cars to the front of the house

The rear garden is low maintenance with a patio area perfect for outside dining and entertaining.

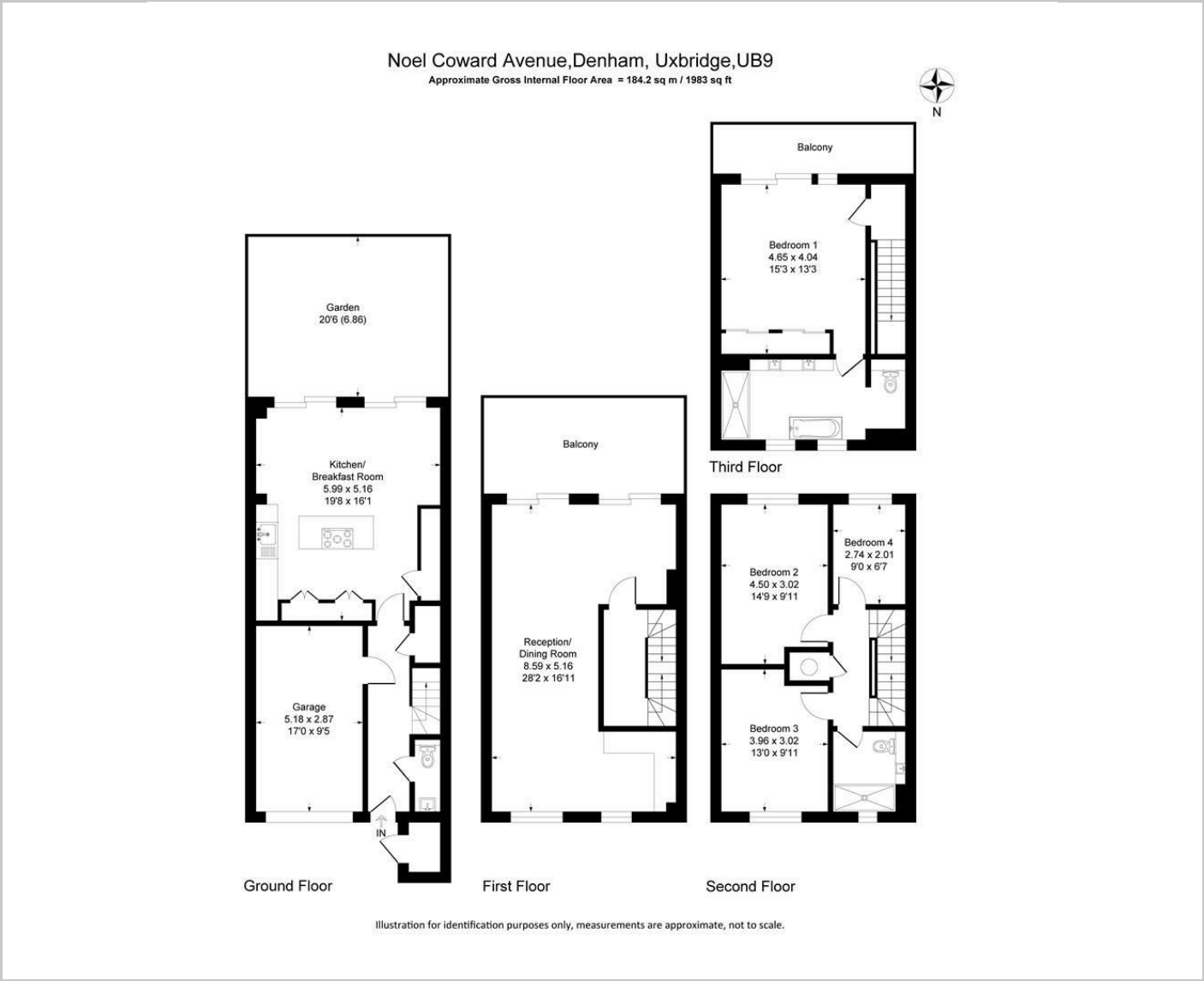
Situation

Set back from the road in a fantastic leafy location, The Denham Film Studios offers a superb collection of homes designed around attractive garden squares, landscaped grounds, beautiful rill water features and private gardens, bordered by extensive protected woodland. The Denham film Studios development is ideally situated within easy reach of the M25 and walking distance to Denham Green with its array of local shops and Denham Railway Station, that provides access into London Marylebone in under 30 minutes.

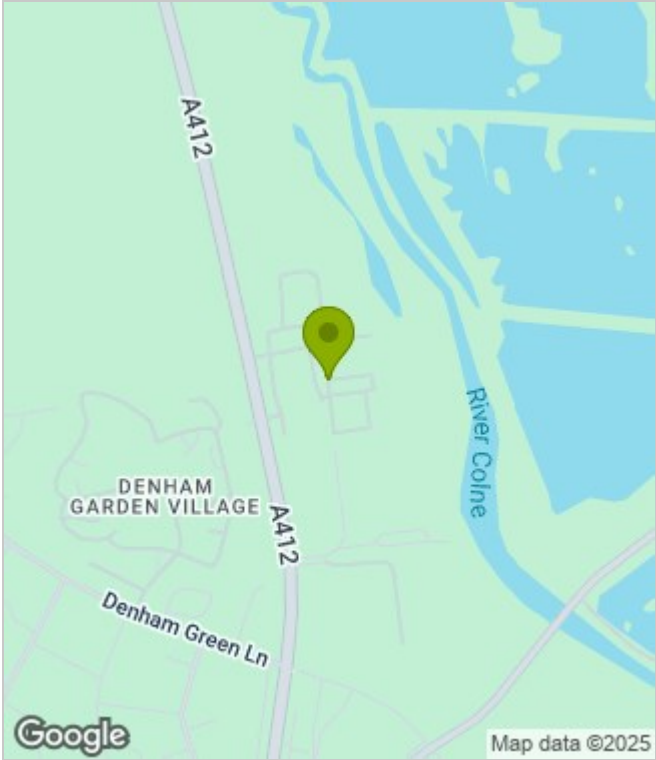
The town of Denham offers classic village appeal and green surroundings. There are plenty of places to eat and drink, as well as enjoy nature with the protected nature reserve and scenic river and canal side walks.



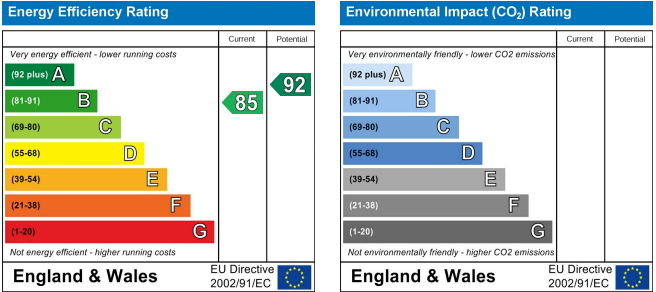
Floor Plans



Area Map



Energy Performance Graph



These particulars, whilst believed to be accurate are set out as a general outline only for guidance and do not constitute any part of an offer or contract. Intending purchasers should not rely on them as statements of representation of fact, but must satisfy themselves by inspection or otherwise as to their accuracy. No person in this firms employment has the authority to make or give any representation or warranty in respect of the property.