



Fredericks Row, EC1V

£6,999 Per week

 5  1  6 

- Five Bedrooms House
- Five Bathrooms
- Reception
- Fully Equipped Kitchen
- Private Roof Terrace
- Close to Angel



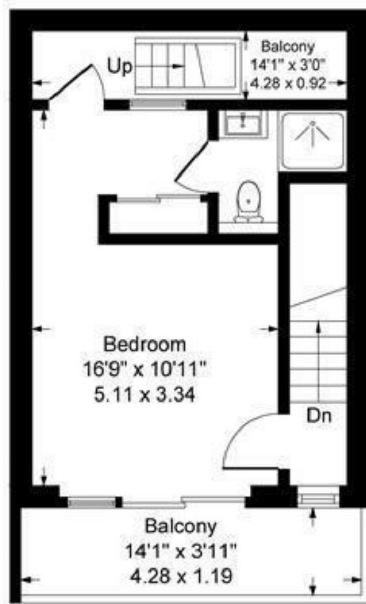
Amazing five bedroom house in a quiet cul-de-sac located in Clerkenwell just off Goswell Road and close to Angel Station. The house comprises of a reception and a fully equipped kitchen on the ground floor, five double bedrooms with four ensuite bathrooms, an additional fifth bathroom and a separate cloakroom. Offered Furnished.

Ideal for professional sharers or students.

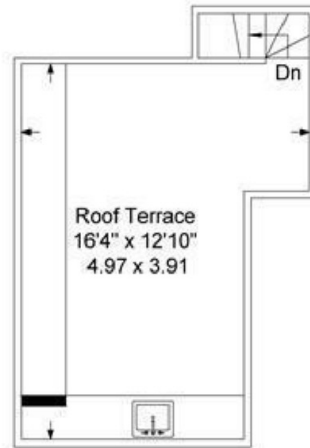
Ideally located only moments from Angel Station, easy access to Islington, Shoreditch, The Barbican as well as Liverpool Street which has an abundance of connectivity across London. Access to Kings Cross St Pancras in 10 min via the Northern line.



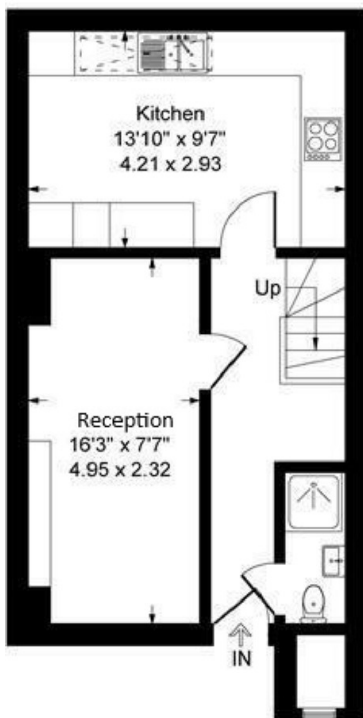
Fredericks Row, London, EC1V
Approximate Gross Internal Area = 1348 sq ft / 125.23 sq m



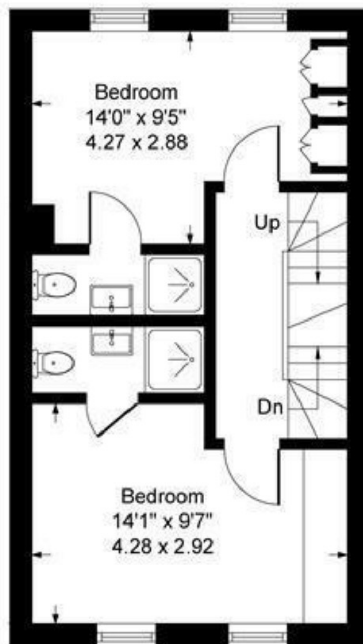
Third Floor



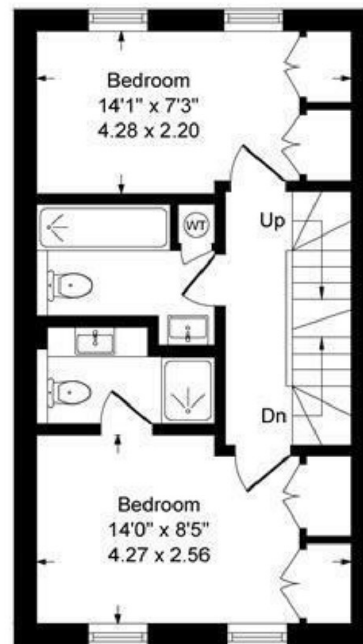
Roof Terrace



Ground Floor



First Floor



Second Floor

Illustration for identification purposes only.
measurements are approximate, not to scale. (ID788)

35A Wapping High Street,
London, E1W 1NR
020 7702 3456
ea2group.com