



Waterman Way, E1W

£1,300,000

 4  1  2  C

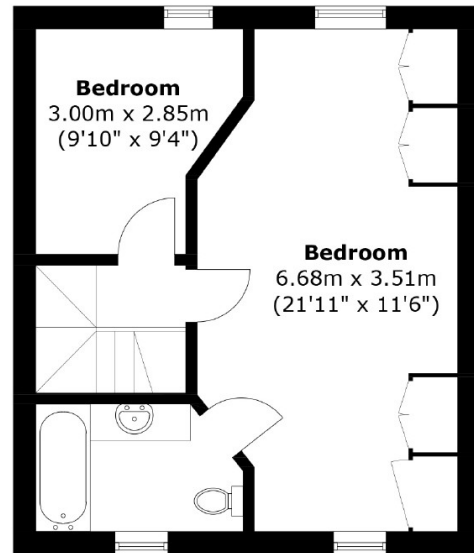
- Four Bedrooms
- Freehold
- On The Canal
- Balcony
- Private Garden
- Chain Free



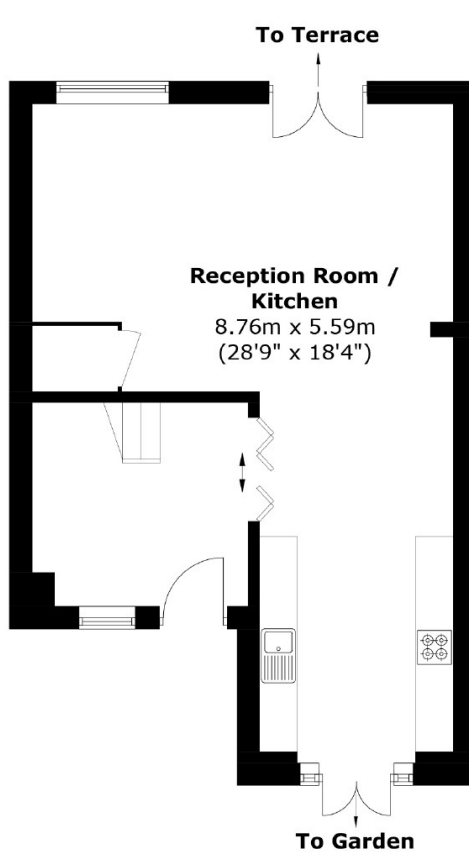
Price From £1,300,000. Ea2 are pleased to present this freehold, four bedroom, two bathroom home on the Ornamental Canal in West Wapping. Potential to extend (STUPP). Open Plan Kitchen, Dining, Living area which is perfect for entertaining. A perfect family home. Being offered Chain Free.

Approximately 0.6 Miles from the picturesque St. Katharine's Docks offering a wide range of Restaurants, Wine Bars, Coffee Shops & Pubs. 0.4 Miles from Wapping Overground Station offering great access to the City, Shoreditch & Canary Wharf. Conveniently located for Wapping Lane that has a selection of convenience stores.

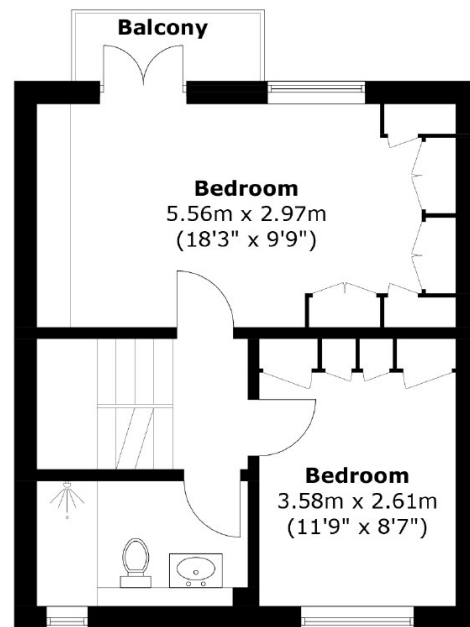




Second Floor



Ground Floor



First Floor

Total area: Approx. 117.9 sq. meters (1,269.1 sq. feet)
Plus balcony, approx. 2.2 sq. meters (23.7 sq. feet)

35A Wapping High Street,
London, E1W 1NR
020 7665 5589
ea2group.com