

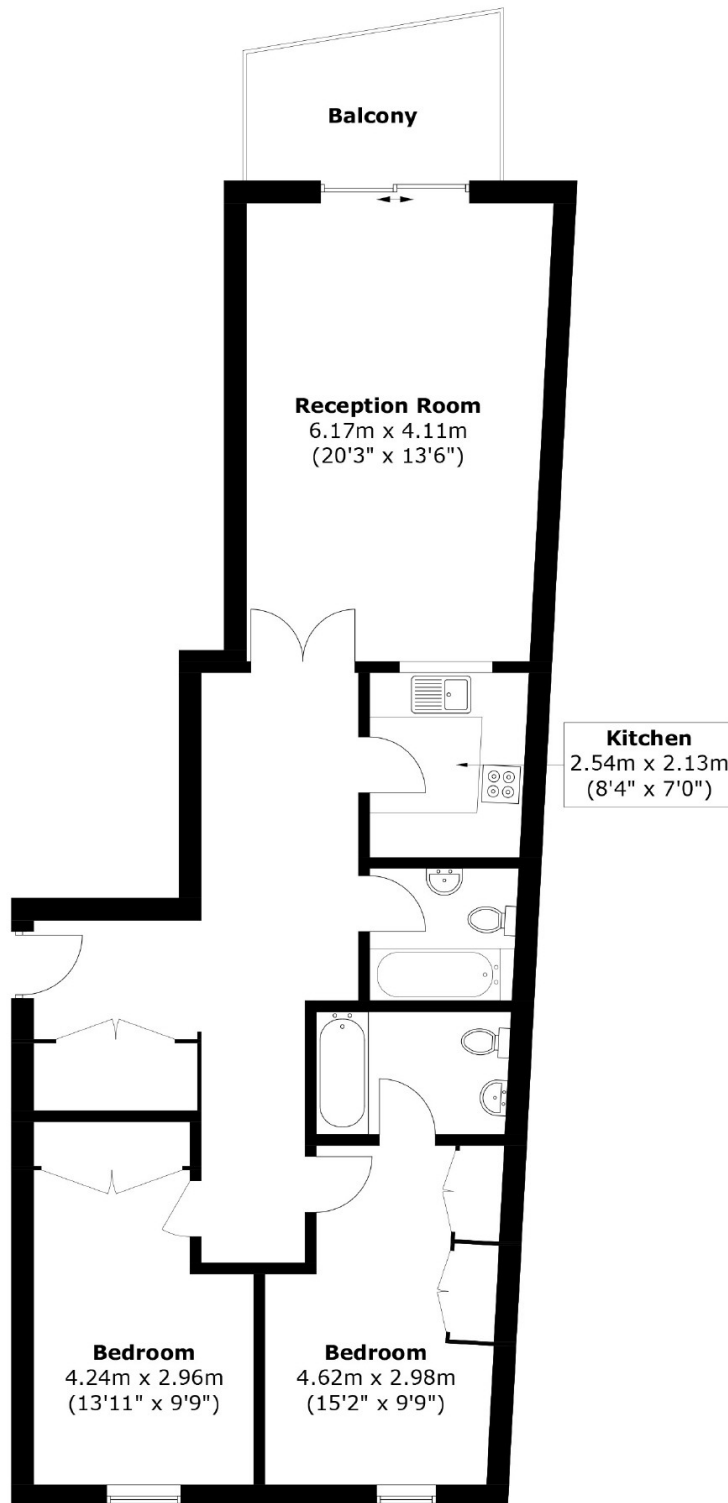


Wapping High Street, E1W

£880,000

 2
  1
  2
  B

- Riverviews
- Balcony
- 2 Bedrooms
- 2 Bathrooms.
- Kitchen
- Reception
- 24 hour Concierge
- Residents Gym



Total area: Approx. 87.8 sq. meters (945.1 sq. feet)
Plus balcony, approx. 6.8 sq. meters (73.2 sq. feet)

35A Wapping High Street,
London, E1W 1NR
020 7665 5589
ea2group.com