

ALLDAY
& MILLER



Hubbards Close, Hillingdon, UB8 3FL
£1,800





Hubbards Close, Hillingdon, UB8 3FL

£1,800

- Luxury Apartment
- Two Bathrooms
- Secure Gated Parking
- Easy Access To Heathrow
- Two Bedrooms
- 16th Century Barn Conversion
- Second Floor
- Under Floor Heating

Description

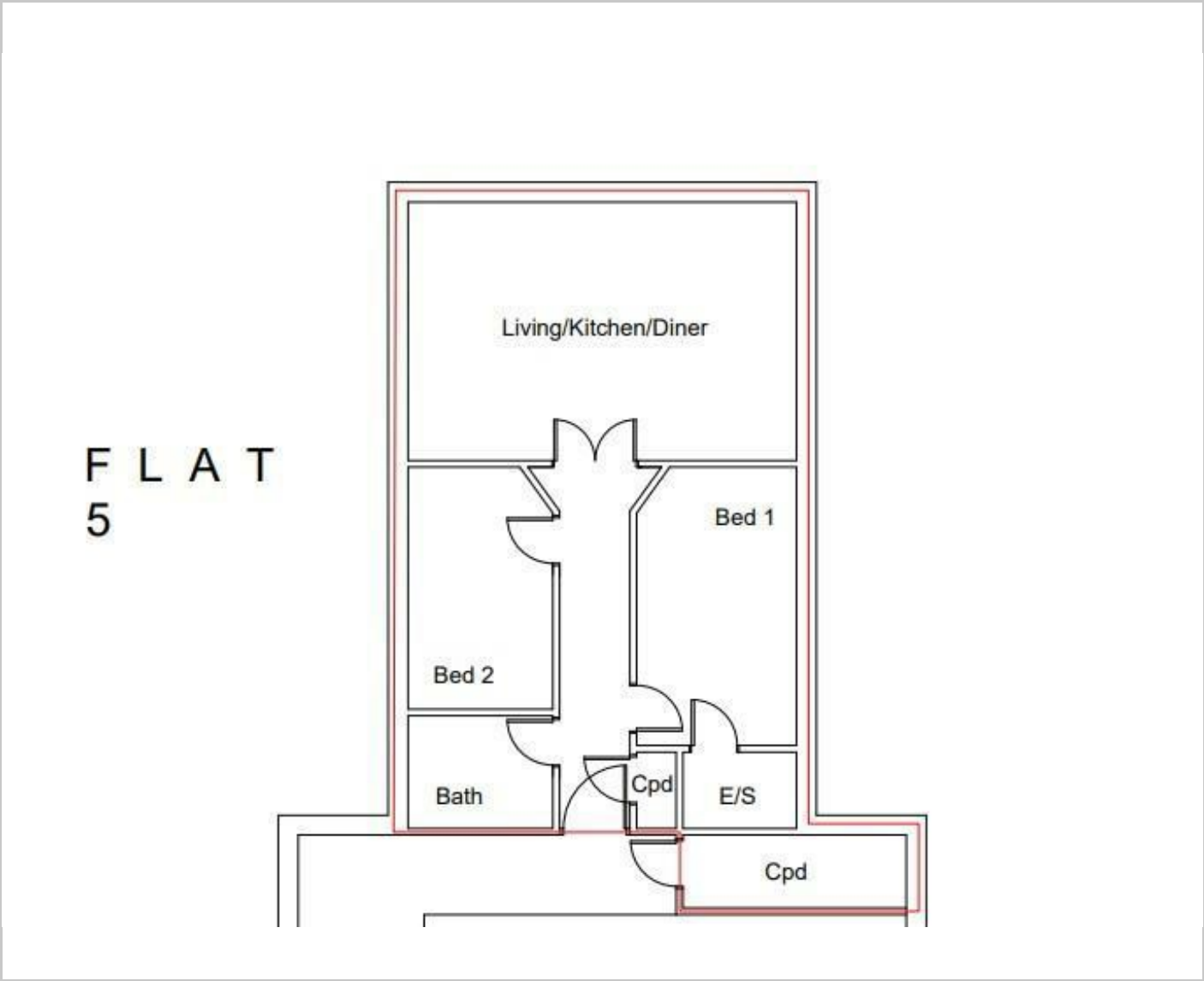
Hubbards Farm Barns is a breath-taking development filled with character and charm from the 16th Century. This bright and airy apartment enjoys state of the art finishes through out whilst retaining many original features. The accommodation offers a large hallway, open living space and fully fitted kitchen, two double bedrooms with en suite shower to master suite and a crisp family bathroom. The communal areas also offer a sense of space and light with attractive décor, large windows and strategic lighting. Surrounding the development you have communal gardens with allocated parking set behind gates.

Situation

Hubbards Close is situated off West Drayton Road, within easy reach of local shops, schools and bus links into Uxbridge Town Centre, with its multiple shopping facilities, restaurants and bars and the Metropolitan/Piccadilly Line Station. For the motorist the A40, M40 and M25 are easily accessible.



Floor Plans



These particulars, whilst believed to be accurate are set out as a general outline only for guidance and do not constitute any part of an offer or contract. Intending purchasers should not rely on them as statements of representation of fact, but must satisfy themselves by inspection or otherwise as to their accuracy. No person in this firms employment has the authority to make or give any representation or warranty in respect of the property.

Area Map



Energy Performance Graph

