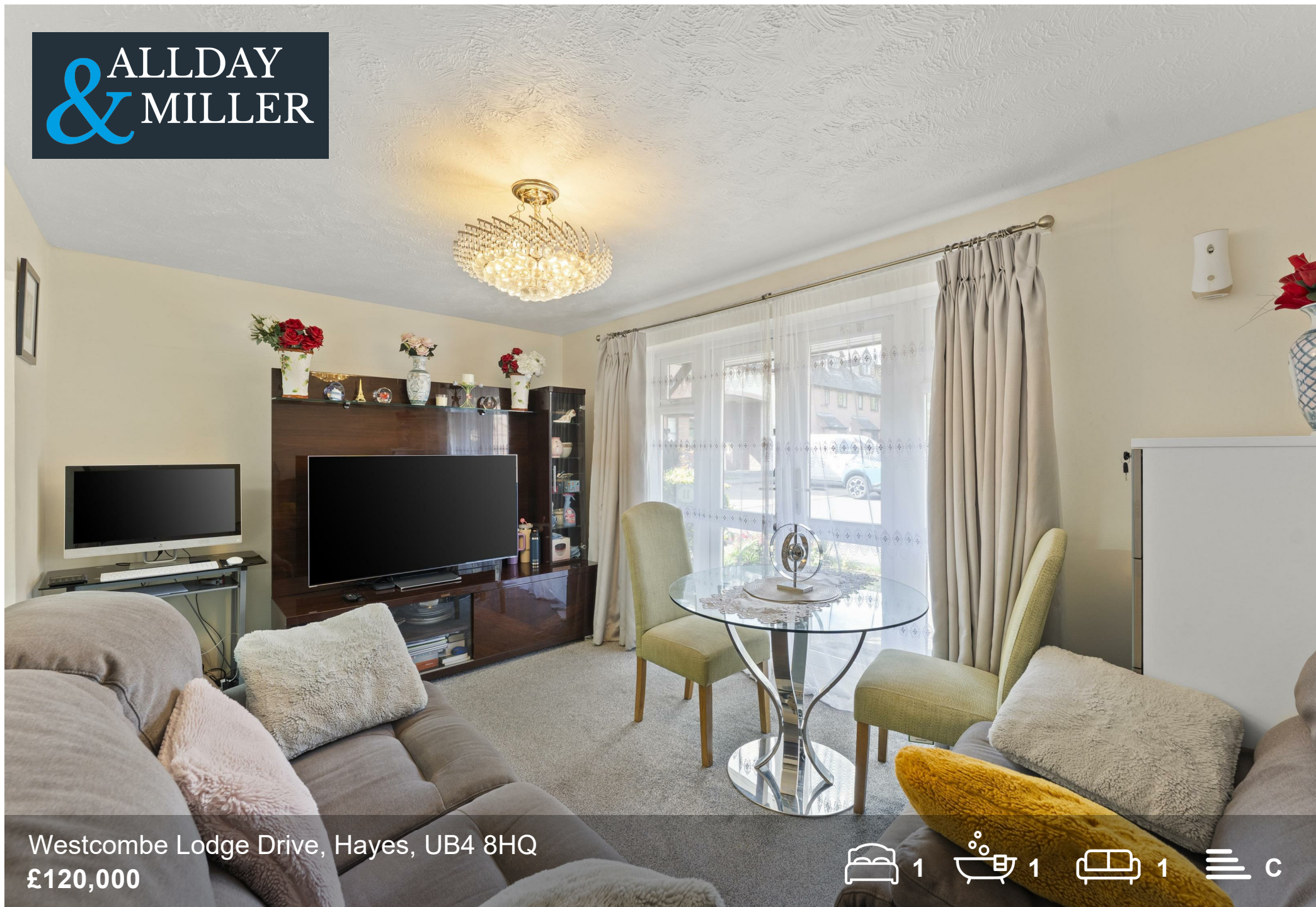


ALLDAY
& MILLER



Westcombe Lodge Drive, Hayes, UB4 8HQ
£120,000

1 1 1 c



Westcombe Lodge Drive, Hayes, UB4 8HQ

£120,000

- Ground Floor Apartment
- Strictly Over 55's Only
- Modern Fitted Kitchen
- Modern Shower Room
- Bright Spacious Reception Room
- One Double Bedroom With Fitted Wardrobes
- On Site Manager with 24 Hour Assistance
- Social Lounge With Regular Events
- French Doors To Private Patio
- Walking Distance to Local Amenities & Transport Links

Description

This charming home presents an excellent opportunity for those seeking a comfortable and contemporary living space.

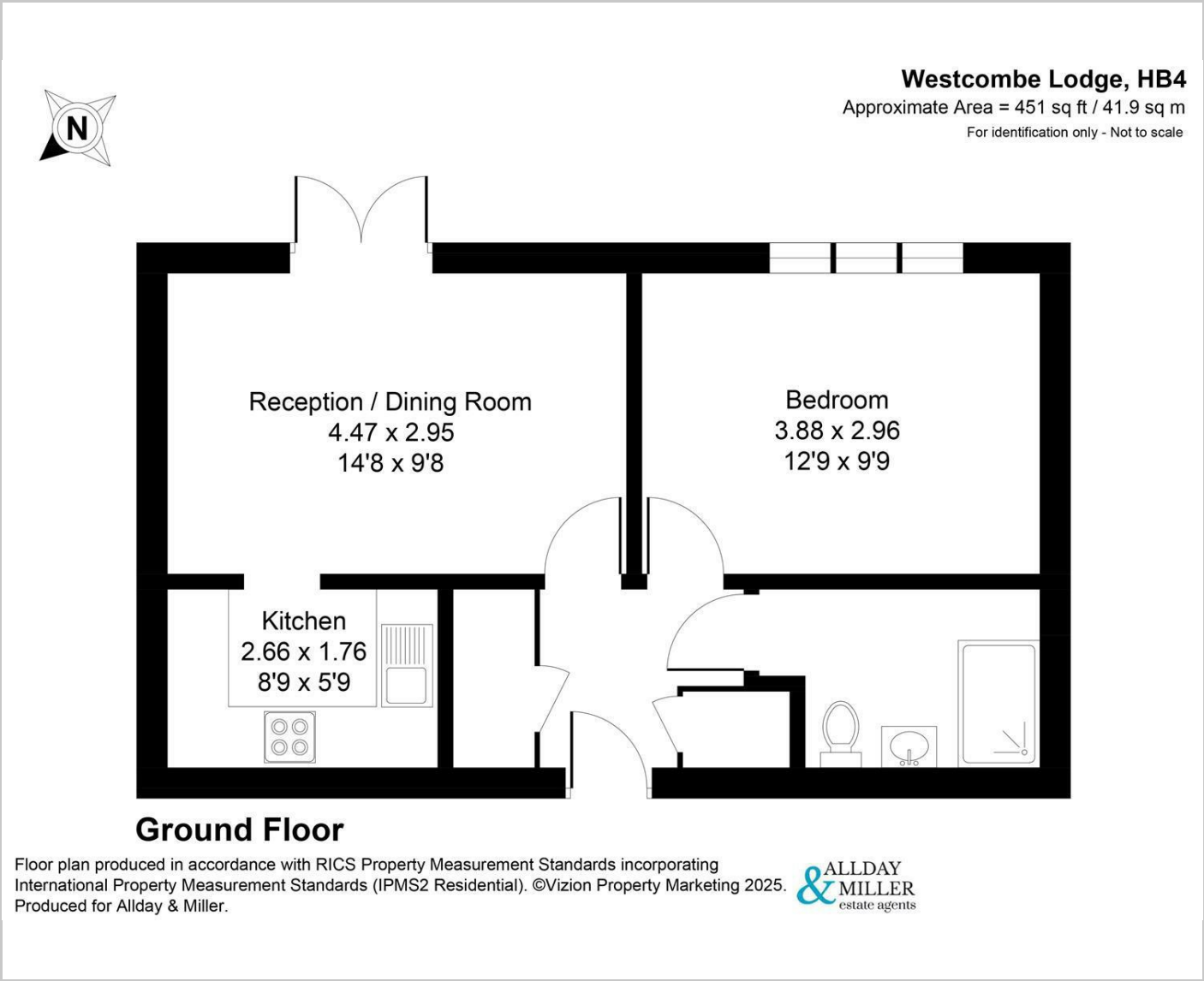
The property features a well appointed reception room that is both bright and airy, creating a welcoming atmosphere for relaxation and entertaining. A modern fitted kitchen, offering ample storage and workspace, a double bedroom complete with fitted wardrobes and a modern bathroom.

Situation

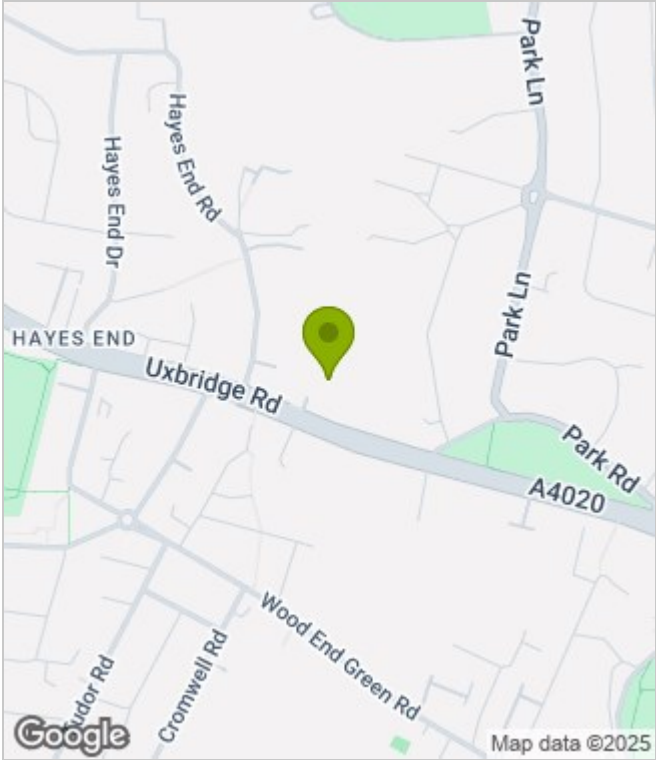
Westcombe Lodge Drive is a highly popular residential over 55's development situated within easy reach of the Uxbridge Road with its variety of shops, take aways, coffee shops and cafes. Hayes and Harlington station is just a short drive away with the Elizabeth line giving several links to Central London and the surrounding areas. A number of bus routes taking you to Uxbridge town centre, Southall, Hounslow, A40/M40 motorways and Heathrow Airport.



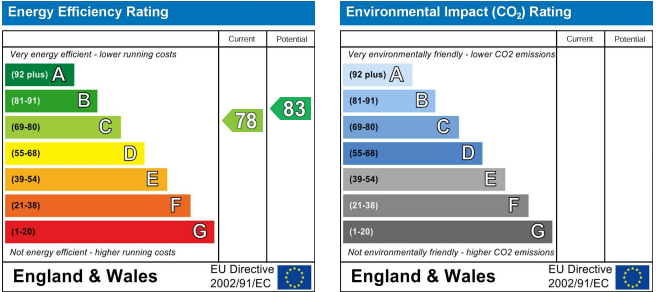
Floor Plans



Area Map



Energy Performance Graph



These particulars, whilst believed to be accurate are set out as a general outline only for guidance and do not constitute any part of an offer or contract. Intending purchasers should not rely on them as statements of representation of fact, but must satisfy themselves by inspection or otherwise as to their accuracy. No person in this firms employment has the authority to make or give any representation or warranty in respect of the property.