

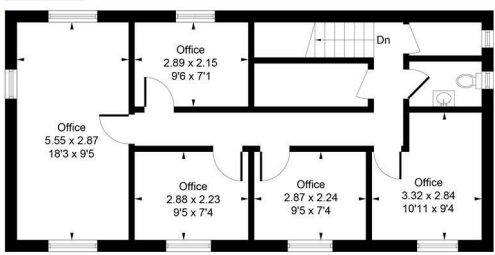
£600,000

Heston Road

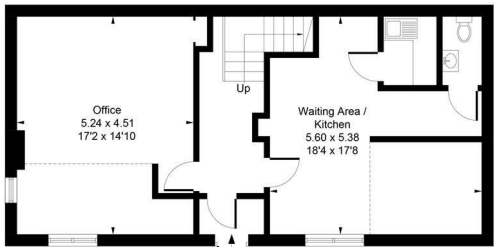
Heston, Hounslow, TW5 0RF



Approximate Gross Internal Area
 Ground Floor = 65.93 sq m / 709 sq ft
 First Floor = 65.76 sq m / 708 sq ft
 Total = 131.69 sq m / 1417 sq ft

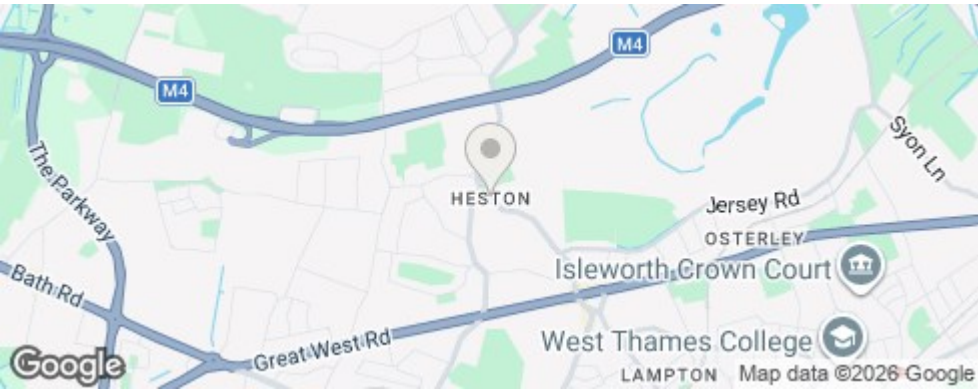


First Floor



Ground Floor

Whilst every attempt has been made to ensure the accuracy of the floor plan contained here, measurements of doors, windows, rooms and any other items are approximate and no responsibility is taken for any error, omission, or mis-statement. This plan is for illustrative purposes only and should be used as such by any prospective purchaser. © Vision Property Marketing Produced for Shaw & Co.



Energy Efficiency Rating		Current	Potential
Very energy efficient - lower running costs			
(92 plus)	A		
(81-91)	B		
(69-80)	C		
(55-68)	D		
(39-54)	E		
(21-38)	F		
(1-20)	G		
Not energy efficient - higher running costs			
England & Wales		EU Directive	
		2002/91/EC	

Agents Note: Whilst every care has been taken to prepare these particulars, they are for guidance purposes only. All measurements are approximate and are for general guidance purposes only and whilst every care has been taken to ensure their accuracy, they should not be relied upon and potential buyers/tenants are advised to recheck the measurements

OFFICE ADDRESS
 10 Central Parade
 New Heston Road
 Heston
 Middlesex
 TW5 0LH

OFFICE DETAILS
 02085707258
 newhomes@shawandcoestates.co
 https://www.shawandcoestates.com