



South Place, Beetwell Street, Chesterfield, S40 1SZ

£5,200 Per Annum



South Place, Beetwell Street

Chesterfield, S40 1SZ

- Situated within to The Nest - Therapy and Wellness HubWell situated commercial space close to the town centre
- High quality refurbished room of 165 sq. ft/ 15.329 sq. m
- Beautifully appointed and welcoming reception
- Available Immediately

An excellent opportunity to acquire well-situated and flexible ground floor space situated close to the town centre of Chesterfield, comprising of a room within The Nest – Therapy and Wellness Hub.

A viewing is essential to appreciate the opportunity on offer.

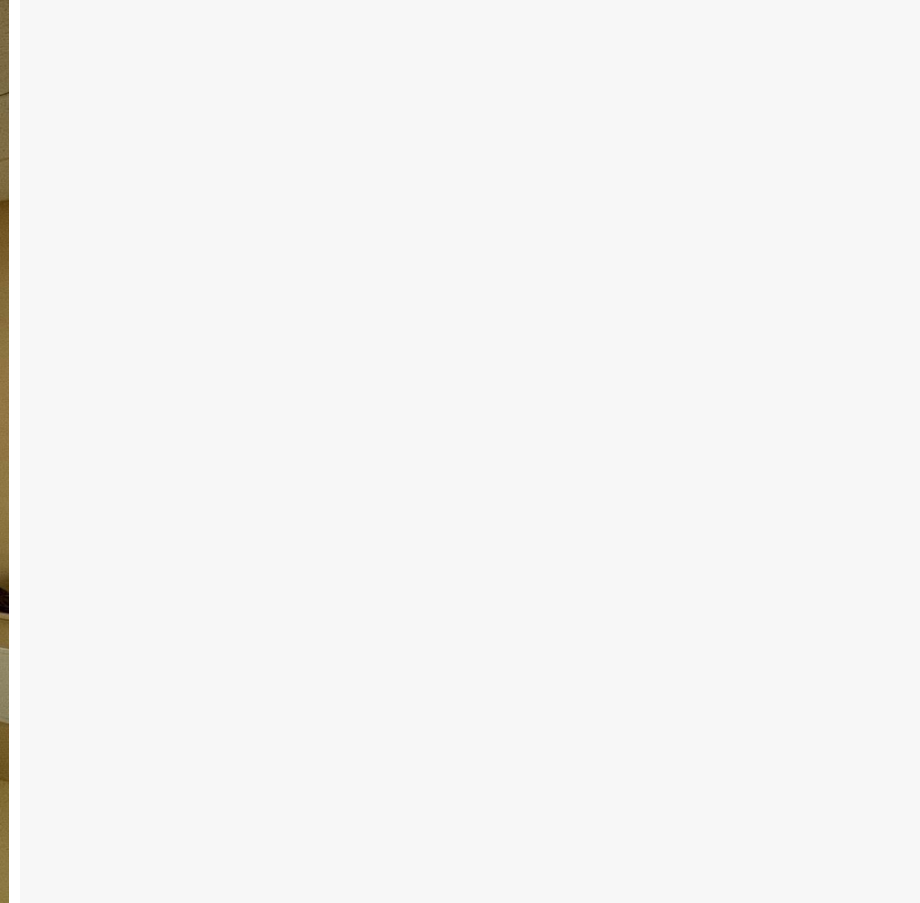


Room 6c, South Place

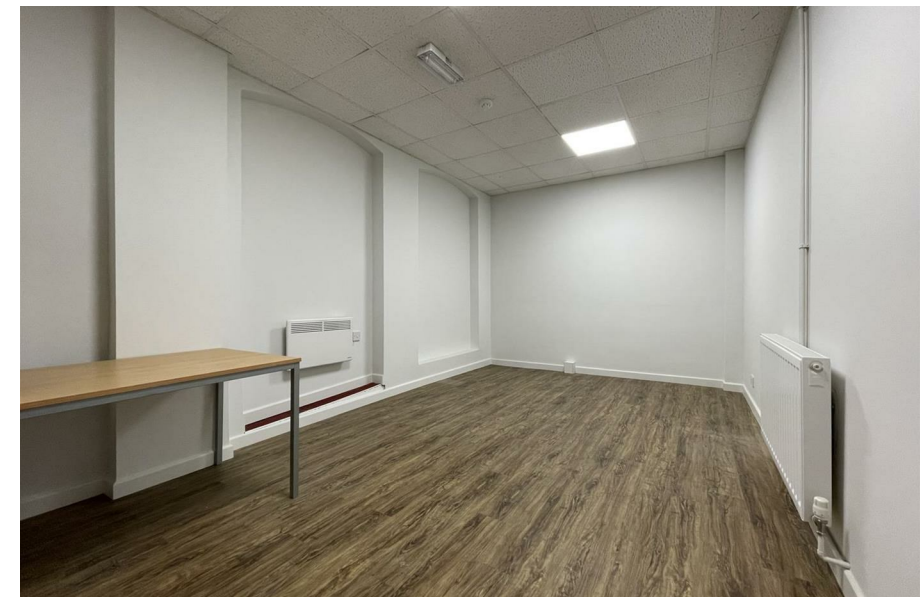
Accommodation

Key Information



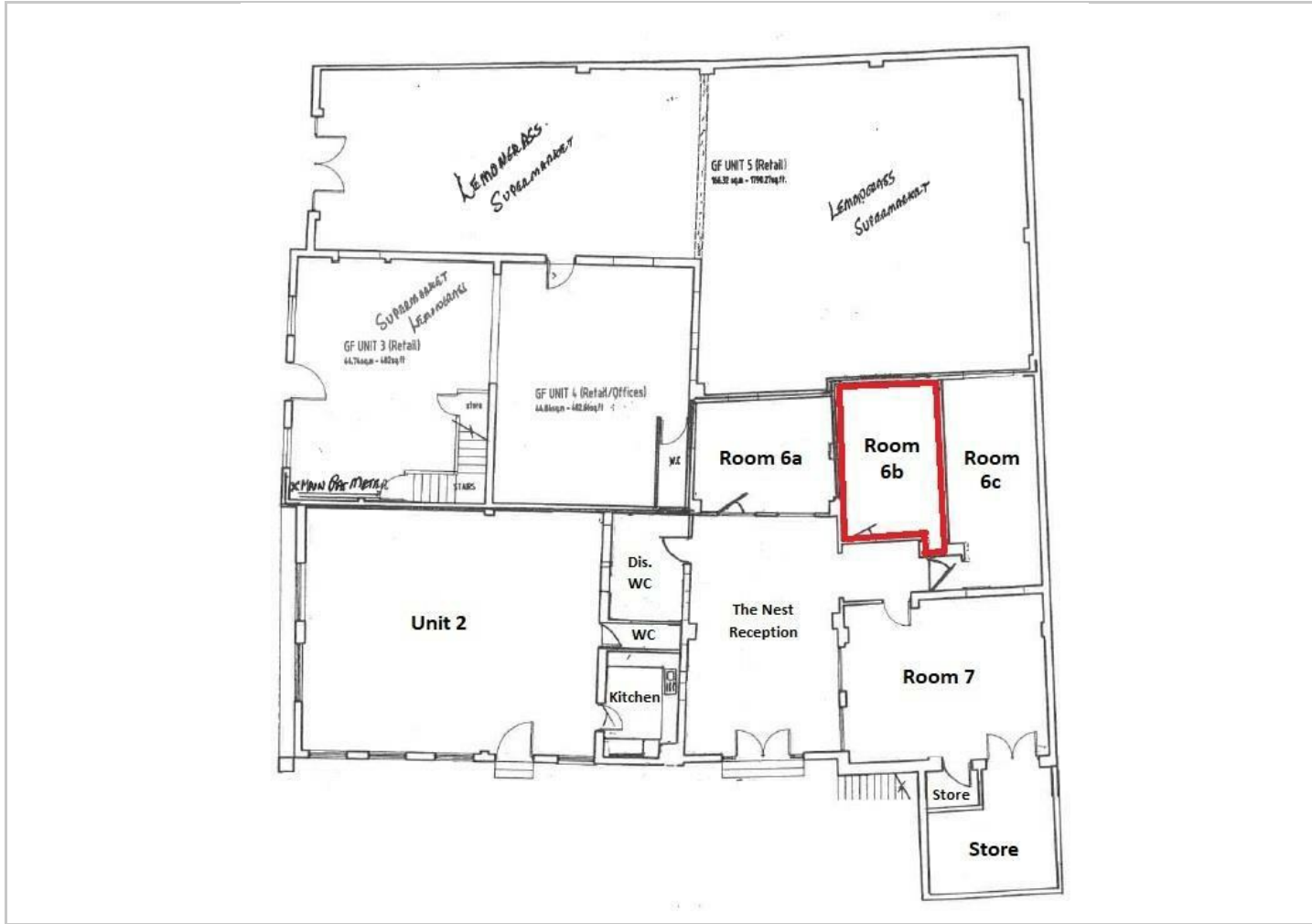


Directions





Floor Plans



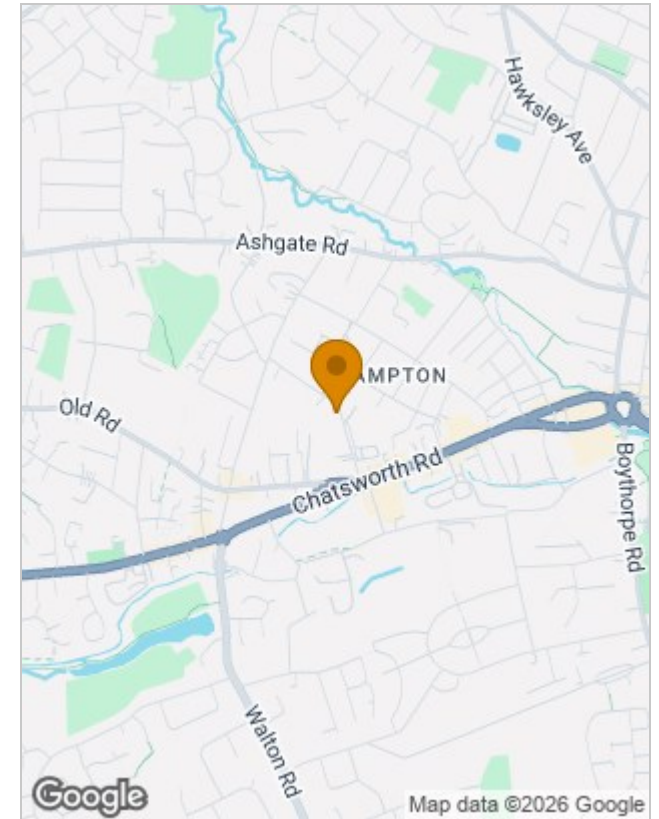
Viewing

Please contact our Chesterfield Commercial Office on 01246 233121 if you wish to arrange a viewing appointment for this property or require further information.

The particulars are set out as a general outline only for the guidance of intended purchasers or lessees, and do not constitute, any part of a contract. Nothing in these particulars shall be deemed to be a statement that the property is in good structural condition or otherwise nor that any of the services, appliances, equipment or facilities are in good working order. Purchasers should satisfy themselves of this prior to purchasing.

Ravenside House 46 Park Road, Chesterfield, Derbyshire, S40 1XZ
Tel: 01246 233121 Email: enquiries@bothams.co.uk

Location Map



Energy Performance Graph

Energy Efficiency Rating		
	Current	Potential
Very energy efficient - lower running costs		
(92 plus) A		
(81-91) B		
(69-80) C		
(55-68) D		
(39-54) E		
(21-38) F		
(1-20) G		
Not energy efficient - higher running costs		
England & Wales	EU Directive 2002/91/EC	