



Pinkmove

Silver Birch Close

£264,000

- New Price
- Property Looks Out onto the Canal
- Enclosed, Low Maintenance Rear Garden
- Beautifully Decorated Throughout
- Modern Kitchen/Diner
- Family Bathroom, En-Suite to Master Bedroom and Downstairs Wc
- Three Parking Spaces



3 2 1

Pinkmove

01633 746088
team@pinkmove.co.uk



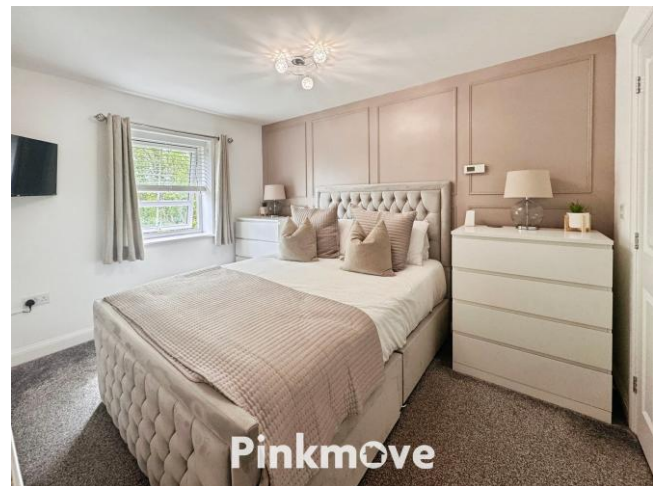
About the property

Situated in a quiet and attractive position on Silver Birch Close, Cwmbran, this well-presented three bedroom semi-detached home enjoys a pleasant outlook with the canal flowing past the front, creating a relaxing atmosphere and offering scenic walks close by.

The property is entered into an entrance hall where a convenient downstairs WC is located to the front. From here, you are led through to an inviting lounge, ideal for everyday living, which opens into the modern kitchen diner at the rear. This bright and sociable space is perfect for both family life and entertaining, with French doors opening out onto the low-maintenance rear garden. The garden is designed with a combination of patio and artificial turf, providing an attractive outdoor area with minimal upkeep. Additional garden space can be found to the side of the property, offering a practical area for bins and garden accessories.

Upstairs, the property offers three versatile bedrooms, making it suitable for families or those needing home working space. The master bedroom benefits from its own en-suite shower room, while the remaining bedrooms are served by a family bathroom. Externally, the home benefits from three parking spaces.

The location is well served by local schools, shops and everyday amenities, with Cwmbran town centre close by. Excellent transport links, including road and rail connections, provide easy access to surrounding towns and cities, perfect for commuters.





Accommodation

Lounge

16' 2" x 11' 9" (4.93m x 3.58m)
Max Measurements

Kitchen/Diner

10' 5" x 14' 11" (3.17m x 4.55m)

Downstairs Wc

5' 2" x 3' 1" (1.57m x 0.94m)

Bedroom 1

13' 9" x 8' 5" (4.19m x 2.57m)
Max Measurements

En-Suite

4' 5" x 8' 5" (1.35m x 2.57m)
Max Measurements

Bedroom 2

10' 2" x 8' 6" (3.10m x 2.59m)

Bedroom 3

8' 9" x 6' 3" (2.67m x 1.91m)

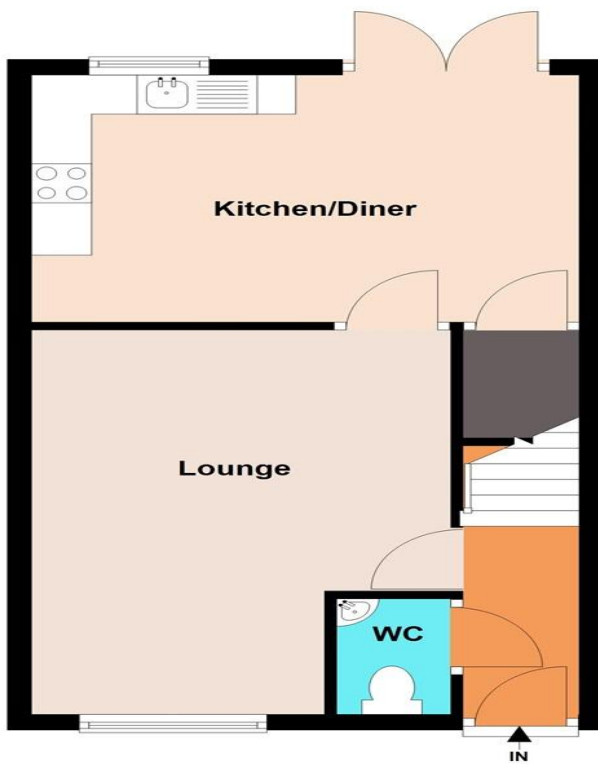
Bathroom

5' 7" x 6' 2" (1.70m x 1.88m)

Floorplan

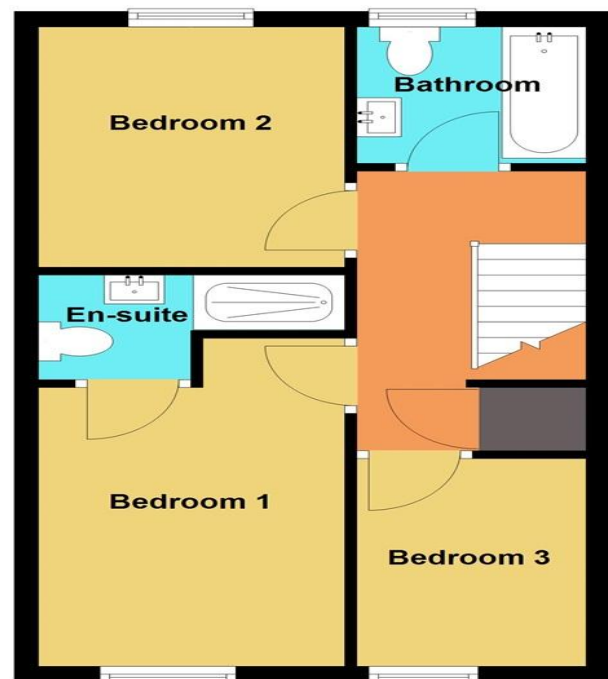
Ground Floor

Approx. 37.3 sq. metres (401.4 sq. feet)



First Floor

Approx. 37.3 sq. metres (401.4 sq. feet)



Total area: approx. 74.6 sq. metres (802.9 sq. feet)

5 Silver Birch Close

Important Information

Note while we endeavour to make our sales details accurate and reliable, if there is any point which is of particular interest to you, please contact the office and we will be pleased to confirm the position for you. We have not personally tested any apparatus, equipment, fixtures, fittings or services and cannot verify they are in working order or fit for their purposes. Nothing in these particulars is intended to indicate that carpets or curtains, furnishings or fittings, electrical goods (whether wired or not). Gas fires or light fittings or any other fixtures not expressly included form part of the property offered for sale. This computer generated Floorplan, if applicable, is intended as a general guide to the layout and design of the property. It is not to scale and should not be relied upon for dimensions. Tenure: We cannot confirm the tenure of the property as we have not had access to the legal documents. The buyer is advised to obtain verification from their solicitor or surveyor.

Peter Alan Limited is registered in England and Wales under company number 2073153, Registered Office is Cumbria House, 16-20 Hockliffe Street, Leighton Buzzard, Bedfordshire, LU7 1GN. VAT Registration Number is 500 2481 05. For activities relating to regulated mortgages and non-investment insurance contracts, Peter Alan Limited is an appointed representative of Connells Limited which is authorised and regulated by the Financial Conduct Authority. Connells Limited's Financial Services Register number is 302221. Most buy-to-let