



GUIDE PRICE

£265,000

Willow Bank Road

Alderton GL20 8NJ

THE PROPERTY

Sold by Adams

A Discount Market Value Scheme (qualifying criteria below) three bedroom semi-detached house, built by Cala homes in 2016 and offered with the balance of the NHBC warranty.

This beautifully presented and superbly designed leasehold property is exclusively available to those with a local area connection and is subject to application and qualifying criteria (see below).

You will own 100% of the property but it is offered at 70% of market value and you would have to re-sell it at 70% market value.

Featuring a sunny south-east facing rear garden, two allocated parking spaces, a contemporary kitchen/dining room with integrated appliances, a sitting room with glazed doors to the garden, a cloakroom, three bedrooms and a bathroom.

3



1



1



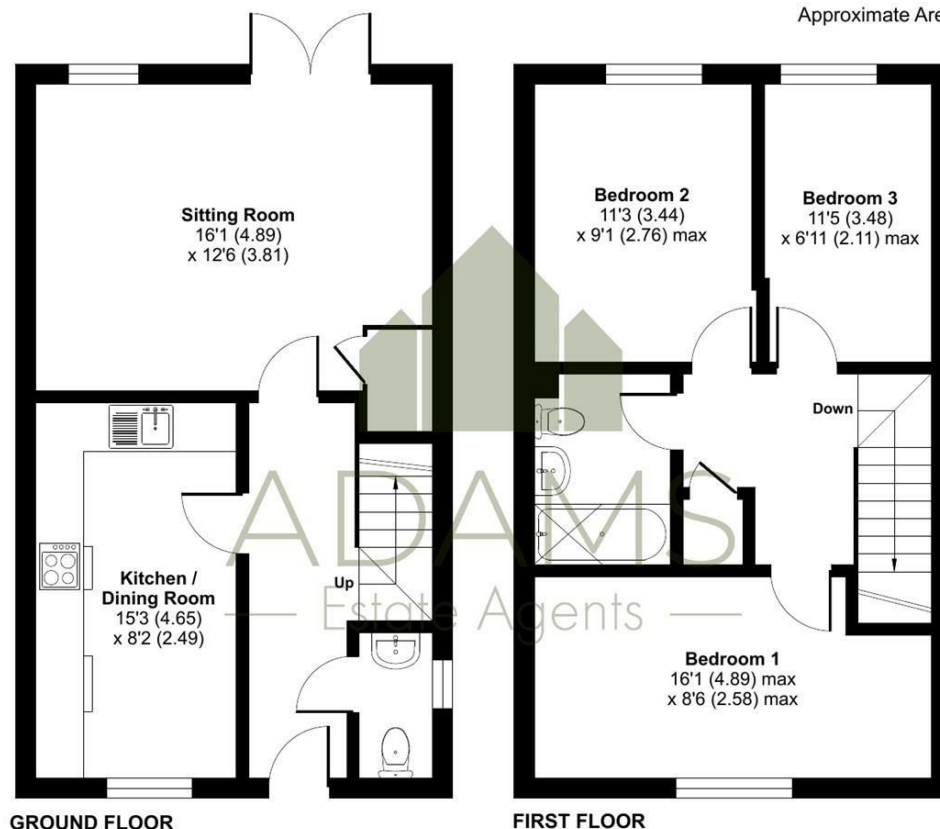






Willow Bank Road, Alderton, Tewkesbury, GL20

Approximate Area = 910 sq ft / 84.5 sq m
For identification only - Not to scale



TENURE
Leasehold

LOCAL AUTHORITY
Tewkesbury Borough Council

COUNCIL TAX BAND
C

VIEWINGS
By prior appointment only

Energy Efficiency Rating		Current	Potential
Very energy efficient - lower running costs			
(92 plus) A			96
(81-91) B		84	
(69-80) C			
(55-68) D			
(39-54) E			
(21-38) F			
(1-20) G			
Not energy efficient - higher running costs			
England & Wales		EU Directive 2002/91/EC	

Agents Note: Whilst every care has been taken to prepare these particulars, they are for guidance purposes only. All measurements are approximate and are for general guidance purposes only and whilst every care has been taken to ensure their accuracy, they should not be relied upon and potential buyers/tenants are advised to recheck the measurements

Floor plan produced in accordance with RICS Property Measurement 2nd Edition, Incorporating International Property Measurement Standards (IPMS2 Residential). © nchecom 2025. Produced for Adams Estate Agents Limited. REF: 1326762



OFFICE ADDRESS

Hereford House, 20 North
Street, Winchcombe,
Cheltenham, Gloucestershire,
GL54 5PS

OFFICE DETAILS

01242 603601
sales@adamsestateagents.com
www.adamsestateagents.com