



# 33 Rose Crescent

Scawthorpe, Doncaster, DN5 9EW

## Offers Around £210,000

Occupying an enviable position on a sought after roadway within Scawthorpe is this substantially EXTENDED two bedroom semi-detached bungalow presenting an excellent opportunity for those seeking a comfortable and well-appointed property.

The property in brief comprises; entrance hallway, extended kitchen/dining room, spacious lounge/dining room, two double bedrooms and contemporary shower room. Outside; large front and rear enclosed gardens, driveway providing ample off road parking and detached garage.

With NO ONWARD CHAIN, this bungalow is ready for you to make it your own without the hassle of lengthy waiting periods. Whether you are looking to downsize, invest, or find your first home, this property on Rose Crescent is a must-see.

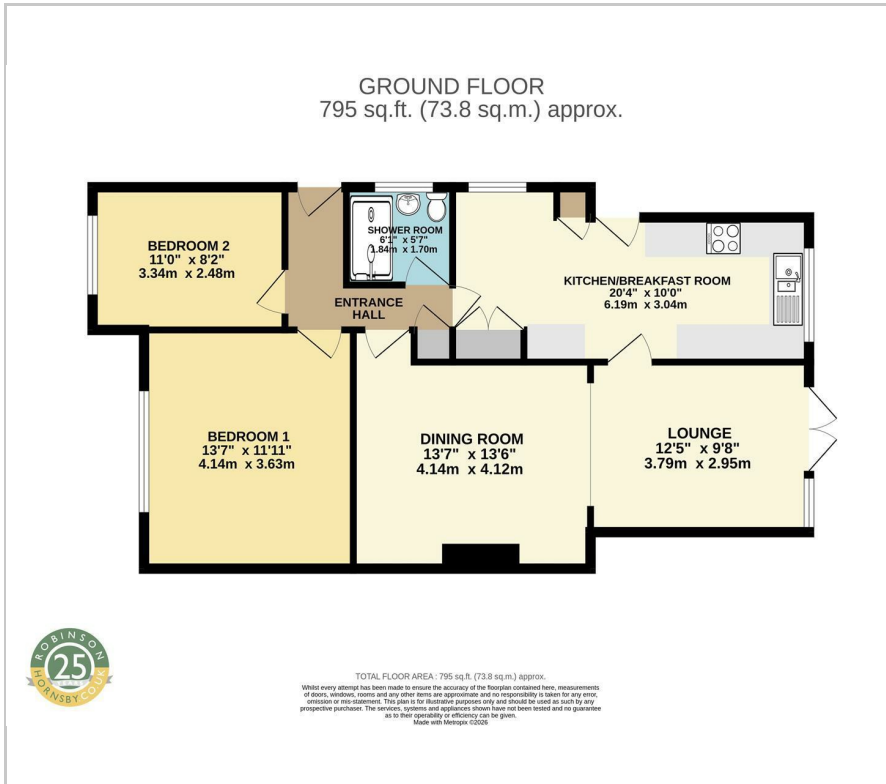
- Semi detached bungalow
- Two double bedrooms
- Substantially extended, well presented accommodation
- Modern fitted kitchen/dining room
- Spacious lounge/dining room
- Contemporary shower room
- Ample off road parking and detached garage
- Large, private enclosed rear garden
- Sought after roadway, close to local amenities
- No onward chain

### Viewing

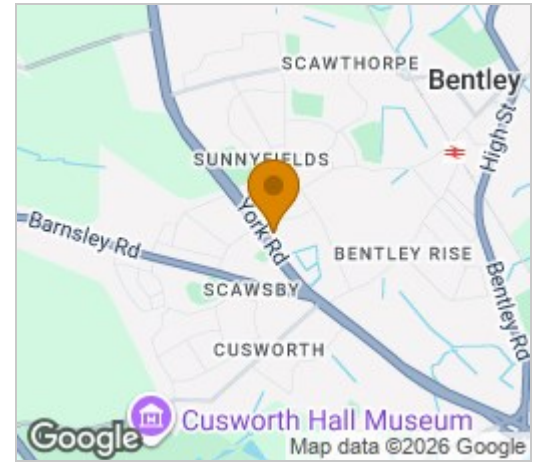
Please contact our Office on 01302 751616 if you wish to arrange a viewing appointment for this property or require further information.



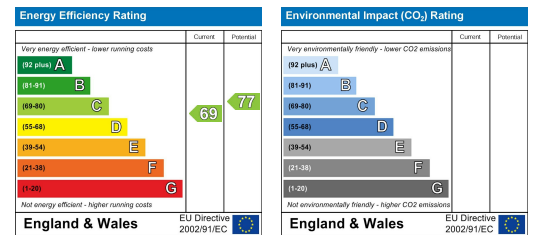
# Floor Plan



# Area Map



# Energy Efficiency Graph



These particulars, whilst believed to be accurate are set out as a general outline only for guidance and do not constitute any part of an offer or contract. Intending purchasers should not rely on them as statements of representation of fact, but must satisfy themselves by inspection or otherwise as to their accuracy. No person in this firm's employment has the authority to make or give any representation or warranty in respect of the property.