



Dartmouth Road, NW2

TO LET - £1,550 Per Month

AVAILABLE TO LET is this spacious First Floor, one bedroom apartment, situated on the within this attractive Victorian building that is located in the coveted Mapesbury Conservation Area.

Offering 515 sq ft of internal living accommodation, the apartment benefits from a bright bay fronted living room with high ceilings, a fitted kitchen and a large double bedroom with a fitted wardrobes which is serviced by a shower room.

Dartmouth Road is a wide, tree-lined street lined with beautiful red-brick properties. The property is within walking distance of the amenities of Walm Lane, as well as Willesden Green Station (Jubilee-Zone 2). The 86-acre Gladstone Park is within walking distance and offers a cafe, tennis courts, and outdoor gym, as well as the secret gem of the area the Mapesbury Dell.



- Spacious 1 bedroom First Floor Flat
- Offering 515 sq ft of accommodation
- Bay fronted reception room
- Willesden Green (Jubilee-Zone 2)
- COUNCIL: Brent (D)
- Deposit: £1,788



020 8450 9377

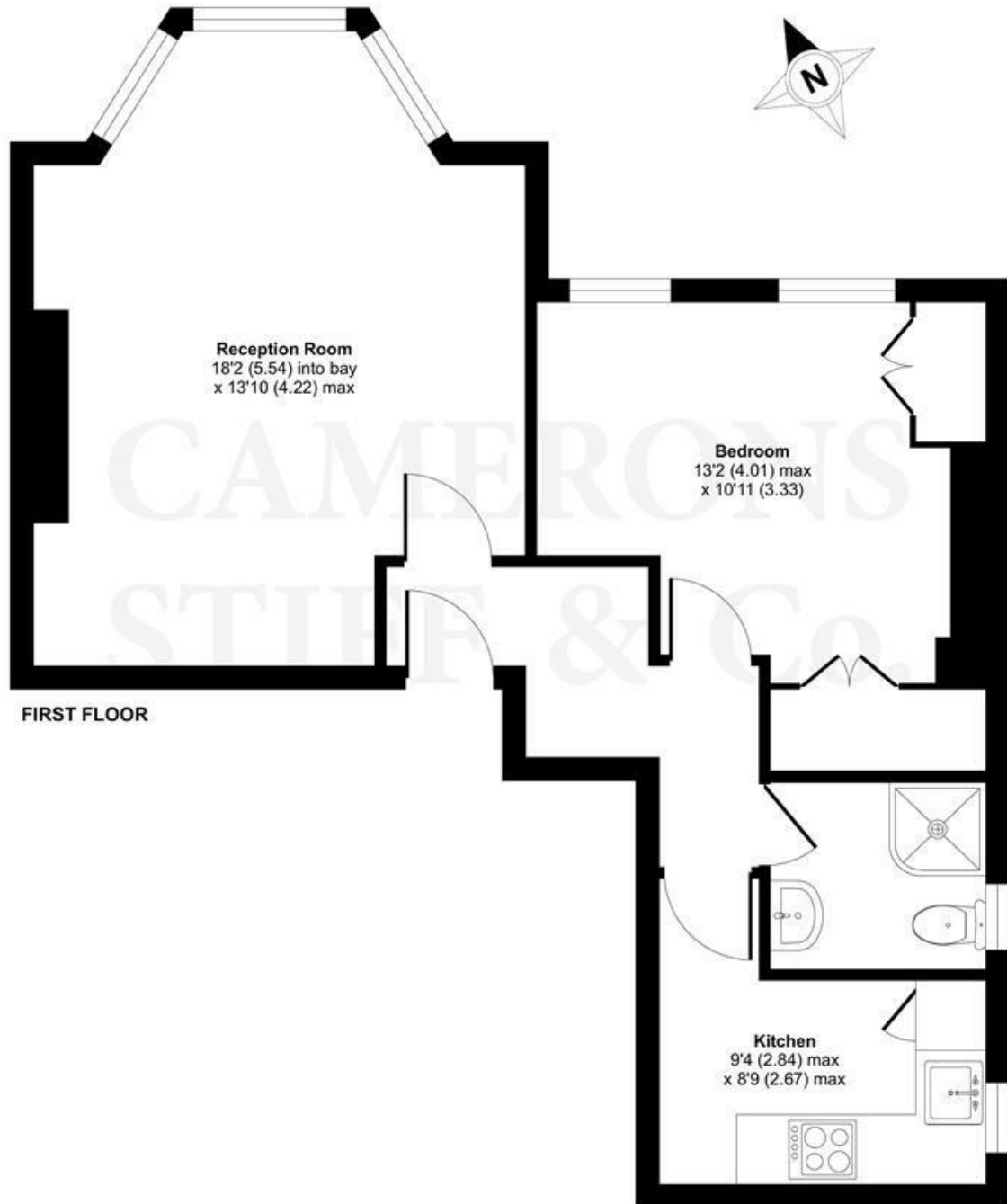
rentals@cameronsstiff.co.uk

cameronsstiff.co.uk

Dartmouth Road, London, NW2

Approximate Area = 515 sq ft / 47.8 sq m

For identification only - Not to scale



Floor plan produced in accordance with RICS Property Measurement Standards incorporating International Property Measurement Standards (IPMS2 Residential). © nichecom 2022. Produced for Camerons Stiff & Co. REF: 845642

EPC: C

Ref: 18083071

