



Flat - Council Tax Band B - EPC Rating: C

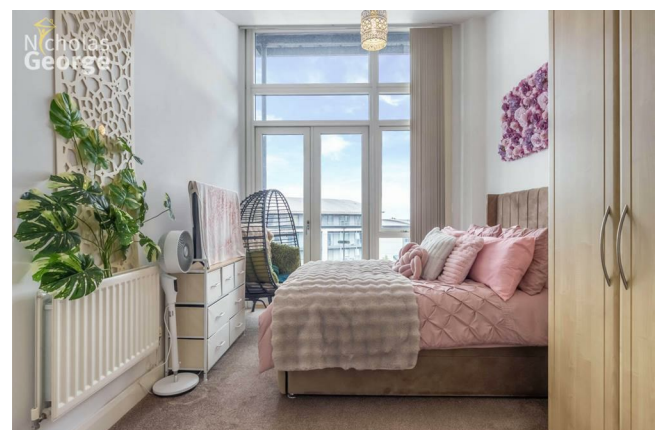
# 56 BATH ROW (APARTMENT 41), CITY CENTRE, BIRMINGHAM, B15 2DG PCM

# £1,025 PCM

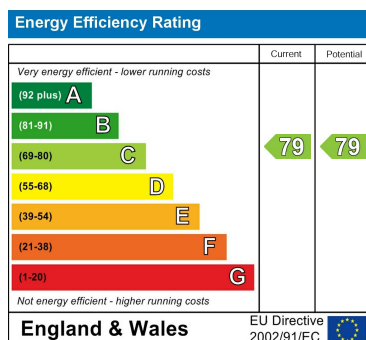
# 56 BATH ROW (APARTMENT 41), CITY CENTRE, BIRMINGHAM, B15 2DG

**\*\*AVAILABLE 10TH JULY - EXCELLENT LOCATION - LARGE PRIVATE BALCONY - VIDEO TOUR AVAILABLE\*\***

This excellent furnished 5th floor flat is well situated in this modern block within easy reach of Broad Street and all City Centre amenities. The flat comprises entrance hall with storage, lounge with double doors onto large, south facing private balcony running the entire length of the apartment. Kitchen with integrated cooker, fridgefreezer, washing machine and dishwasher. 2 double bedrooms with built in storage. Ensuite shower room to master bedroom, plus family bathroom with shower over bath. The property is double glazed and centrally heated. One secure allocated parking space. Please note the video was taken prior to the current tenant moving in. Available 10th July Our ref (P3788)



## Energy Performance Graph



Contact us:

Phone: 0121 442 2049

Email: sales@nicholasgeorge.co.uk

Tenure:

We understand the property is with XXX years remaining but interested parties should obtain verification from their own solicitor.

Fees:

We have been informed that annual service charge is £XXX and annual ground rent is £XXX.

Agents Note: Whilst every care has been taken to prepare these particulars, they are for guidance purposes only. All measurements are approximate and are for general guidance purposes only and whilst every care has been taken to ensure their accuracy, they should not be relied upon and potential buyers are advised to recheck the measurements.

**Council tax band B.**

