



Speeding Drive, Hartlepool, TS24 9QE

welcome to

Speeding Drive, Hartlepool

Attention investors and first-time buyers - this competitively priced three-bedroom mid-terrace property is offered for sale with no onward chain, making it an ideal and straightforward purchase.

Entrance Hallway

Door to front, staircase to first floor.

Lounge

Window to front, ornate style fireplace with inset fire, radiator, coved cornicing.

Kitchen

Door to rear, window to rear, wall and base units with complimentary working surfaces, inset, stainless steel sink and drainer unit with mixer tap, recess for cooker, recess and plumbing for washing machine, breakfast bar, radiator.

Landing

Loft access, window to side.

Bedroom 1

Window to rear, radiator.

Bedroom 2

window to front, radiator.

Bedroom 3

Window to front, radiator.

Bathroom

Window to rear, bath, low level low flush, pedestal wash hand basin, radiator.

Front Garden

Low maintenance, gated.

Rear Garden

Enclosed rear garden.

Parking

On street parking.





view this property online mannersandharrison.co.uk/Property/HAR120627



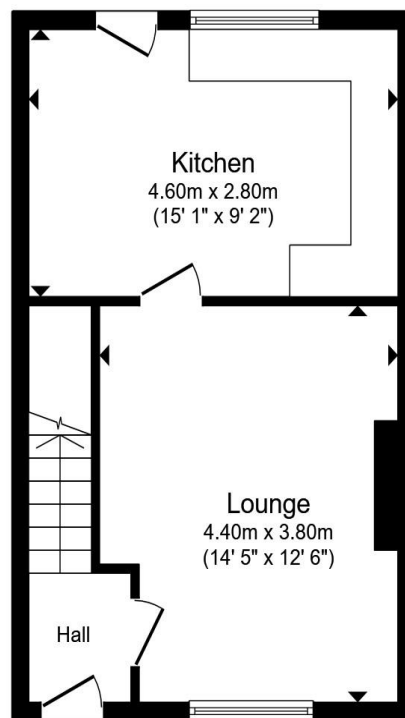
welcome to

Speeding Drive, Hartlepool

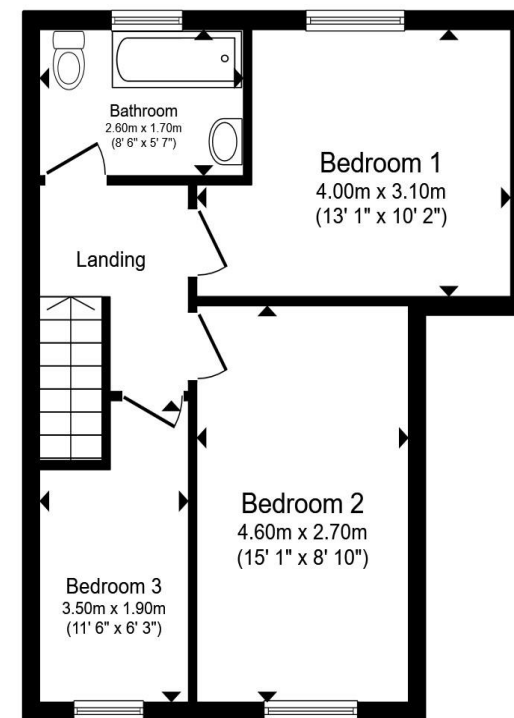
- NO ONWARD CHAIN
- ATTENTION INVESTORS
- THREE BEDROOMS
- REAR GARDEN
- ON STREET PARKING

Tenure: Freehold EPC Rating: D
Council Tax Band: A

£80,000



Ground Floor



First Floor

Total floor area 77.3 m² (833 sq.ft.) approx

This floor plan is for illustrative purposes only. It is not drawn to scale. Any measurements, floor areas (including any total floor area), openings and orientation are approximate. No details are guaranteed, they cannot be relied upon for any purpose and they do not form part of any agreement. No liability is taken for any error, omission or misstatement. A party must rely upon its own inspection(s). Powered by www.propertybox.io



view this property online mannersandharrison.co.uk/Property/HAR120627



Property Ref:
HAR120627 - 0005

1. MONEY LAUNDERING REGULATIONS Intending purchasers will be asked to produce identification documentation at a later stage and we would ask for your co-operation in order that there is no delay in agreeing the sale. 2. These particulars do not constitute part or all of an offer or contract. 3. The measurements indicated are supplied for guidance only and as such must be considered incorrect. Potential buyers are advised to recheck measurements before committing to any expense. 4. We have not tested any apparatus, equipment, fixtures or services and it is in the buyers interest to check the working condition of any appliances. 5. Where an EPC, or a Home Report (Scotland only) is held for this property, it is available for inspection at the branch by appointment. If you require a printed version of a Home Report, you will need to pay a reasonable production charge reflecting printing and other costs. 6. We are not able to offer an opinion either written or verbal on the content of these reports and this must be obtained from your legal representative. 7. Whilst we take care in preparing these reports, a buyer should ensure that his/her legal representative confirms as soon as possible all matters relating to title including the extent and boundaries of the property and other important matters before exchange of contracts.

Manners & Harrison is a trading name of Sequence (UK) Limited which is registered in England and Wales under company number 4268443, Registered Office is Cumbria House, 16-20 Hockliffe Street, Leighton Buzzard, Bedfordshire, LU7 1GN. VAT Registration Number is 500 2481 05.

manners & harrison



01429 261351



Hartlepool@mannersandharrison.co.uk



Shrewsbury House 129 York Road,
HARTLEPOOL, Durham, TS26 9DW



mannersandharrison.co.uk