



## Louisa Gardens, E1

£1,100,000

 7  1  2  C

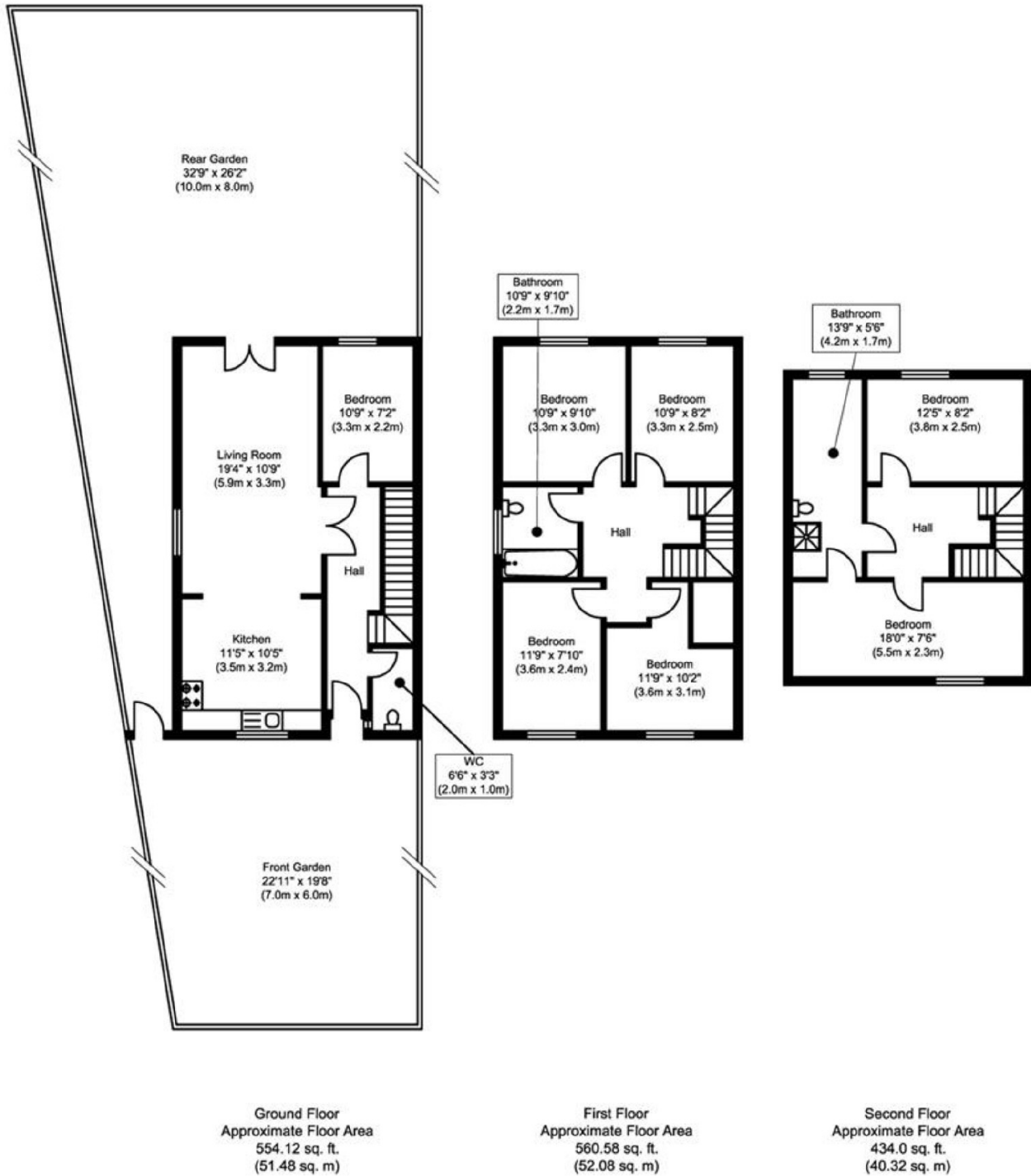
- End of Terrace House
- Freehold
- Off Street Parking
- Garden
- Open Plan Lounge / Kitchen
- Chain Free



EA2 are pleased to offer for sale this end of terrace 3 storey Freehold House offering 7 bedrooms, 2 Bathrooms and a cloakroom. Boasting an impressive 1,550 square feet of living space. The owner has advised that they are currently achieving a rental income of £6,140 per calendar month. A lovely family home or a great buy to let investment. The property is being offered Chain Free.

Located 0.1 miles to Stepney Green Station and local bus routes providing great access to the City, Spitalfields, Shoreditch & Canary Wharf. Close to Queen Mary University and the Royal London Hospital.





## Louisa Gardens, E1

Whilst every attempt has been made to ensure the accuracy of the floor plan contained here, measurements of doors, windows, rooms and any other items are approximate and no responsibility is taken for any error, omission, or mis-statement. This plan is for illustrative purposes only and should be used as such by any prospective purchaser or tenant. The services, systems and appliances shown have not been tested and no guarantee as to their operability or efficiency can be given.  
produced on behalf of Ea2

35A Wapping High Street,  
London, E1W 1NR  
020 7665 5589  
ea2group.com