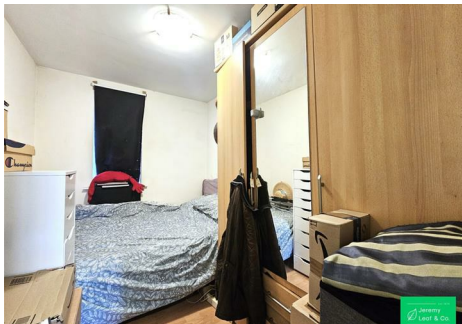


est 1979

Jeremy
Leaf & Co.



Simms Gardens, East Finchley, N2

£1,680 Per Month

- 2 Double Bedrooms
- Close to A406
- Parking
- Flat To Be Painted
- Laminate Flooring

98 High Road, London, N2 9EB
020 8444 5222

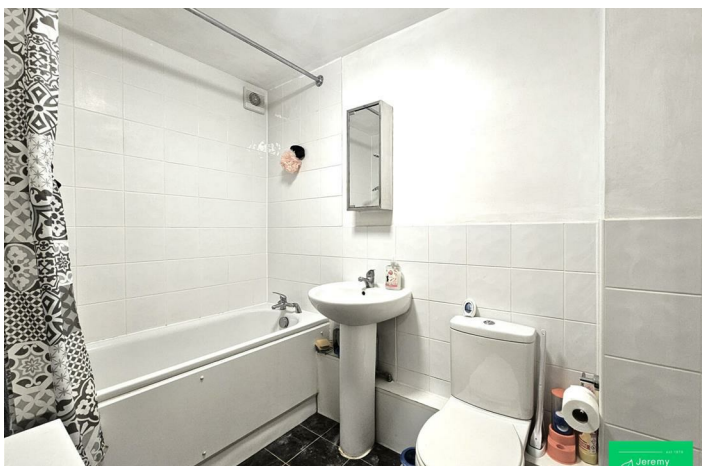
eastfinchley@jeremyleaf.co.uk
<https://www.jeremyleaf.co.uk/>

Simms Gardens, East Finchley, N2 8HT

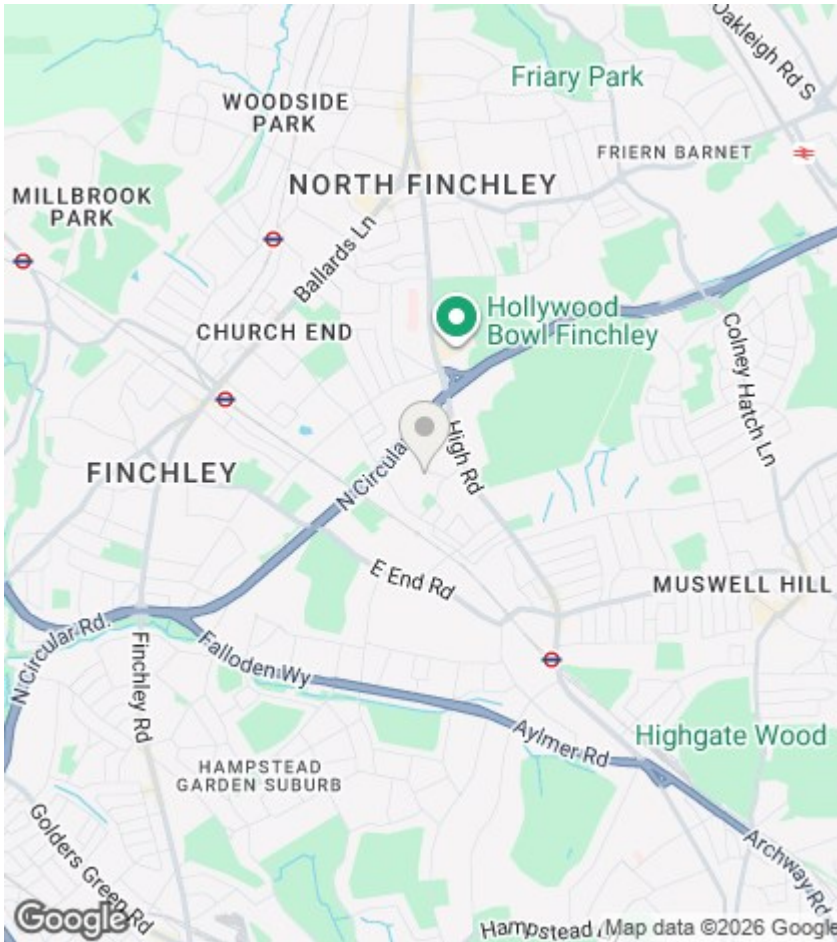
We offer a 2 double bedroom, first floor furnished/part furnished flat within a purpose built development. To be painted throughout prior to occupation. Comprises separate kitchen, full bathroom, laminated flooring. EPC rated C, Council tax band D, close to the A406 and East Finchley High Road. A short bus ride to East Finchley tube (Northern line zone 3) Available 20th April.



Council Tax Band: D







Directions

Viewings

Viewings by arrangement only. Call 020 8444 5222 to make an appointment.

EPC Rating:

C

Energy Efficiency Rating		Current	Potential
Very energy efficient - lower running costs			
(92 plus) A			
(81-91) B			
(69-80) C		71	81
(55-68) D			
(39-54) E			
(21-38) F			
(1-20) G			
Not energy efficient - higher running costs			
England & Wales		EU Directive 2002/91/EC	