



Seymour Close, Selly Park BIRMINGHAM B29 7JD

welcome to

Seymour Close, Selly Park BIRMINGHAM

***TWO BEDROOM APARTMENT IN THE SELLY PARK AREA *** LIVING ROOM *** KITCHEN *** BATHROOM *** PARKING SPACE *** GARAGE EN-BLOC *** EPC RATING - C ***

Agent Note

This property is council tax band B.

Entrance Hall

Doors to living room, kitchen, bedroom 1 & 2, and the bathroom. There are also 2 storage cupboards.

Lounge

17' 2" x 9' 11" (5.23m x 3.02m)

2 Double glazed window's which lets natural light in throughout the day, central heating radiator, ceiling light connection, space for dining table, carpet.

Kitchen

10' 11" x 6' 9" (3.33m x 2.06m)

Double glazed window, lino flooring, free standing cooker with cooker hood over, plumbing for washing machine, small breakfast bar, or can be used for an under-counter fridge & freezer, wall mounted boiler, range of wall & base units with drawers and worktops over.

Bedroom 1

13' 7" x 9' 5" (4.14m x 2.87m)

Double glazed window, central heating radiator, ceiling light connection, carpet, well placed racks and wardrobes.

Bedroom 2

11' 8" x 7' 5" (3.56m x 2.26m)

Double glazed window, central heating radiator, ceiling light connection, carpet, well placed racks and wardrobes.

Bathroom

6' 9" x 6' 2" (2.06m x 1.88m)

Lino flooring, tiled walls, bath with shower over & shower curtain rail, low level flush w/c, wash hand basin with hot & cold taps and mirror above.

Gardens

Communal gardens.

Garage En-Bloc

Private garage for the property.





check out more properties at shipways.co.uk



welcome to

Seymour Close, Selly Park BIRMINGHAM

- TWO BEDROOM APARTMENT IN THE SELLY PARK AREA
- FIRST FLOOR APARTMENT
- GARAGE
- ALLOCATED PARKING
- GOOD CONDITION

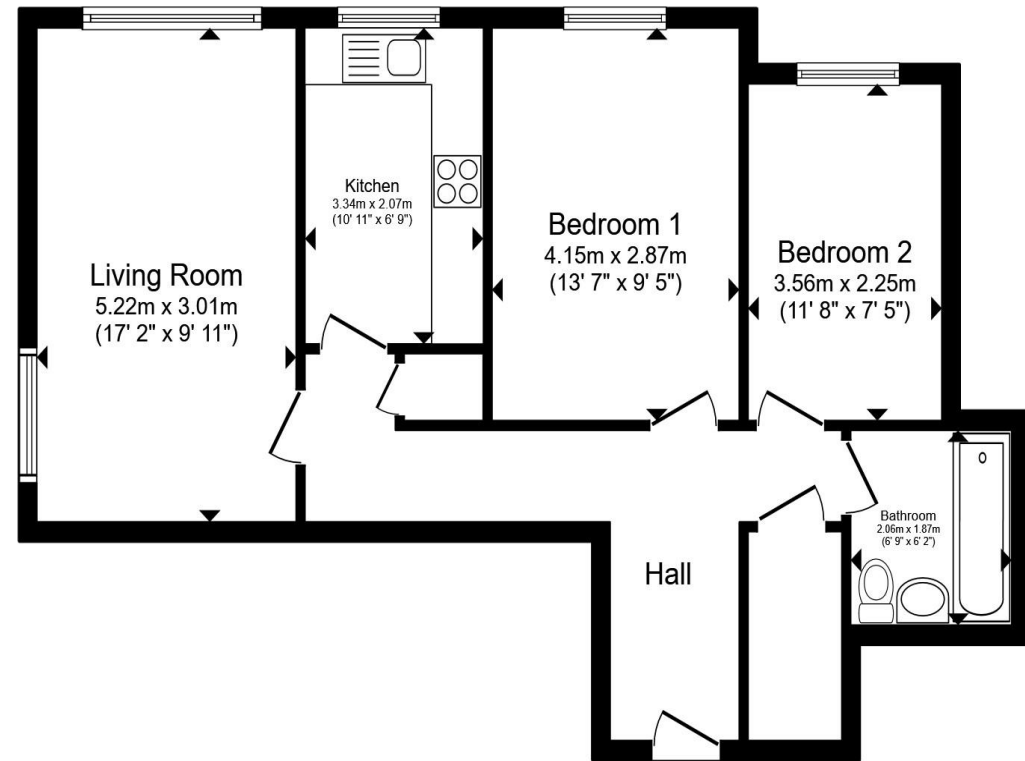
Tenure: Leasehold EPC Rating: C

Council Tax Band: B Service Charge: 2452.38

Ground Rent: Ask Agent

This is a Leasehold property with details as follows; Term of Lease 999 years from 24 Jun 1982. Should you require further information please contact the branch. Please Note additional fees could be incurred for items such as Leasehold packs.

offers in the region of **£200,000**



Total floor area 62.6 m² (673 sq.ft.) approx

This floor plan is for illustrative purposes only. It is not drawn to scale. Any measurements, floor areas (including any total floor area), openings and orientation are approximate. No details are guaranteed, they cannot be relied upon for any purpose and they do not form part of any agreement. No liability is taken for any error, omission or misstatement. A party must rely upon its own inspection(s). Powered by www.propertybox.io



check out more properties at shipways.co.uk



Property Ref:
HBN112238 - 0005

1. MONEY LAUNDERING REGULATIONS Intending purchasers will be asked to produce identification documentation at a later stage and we would ask for your co-operation in order that there is no delay in agreeing the sale. 2. These particulars do not constitute part or all of an offer or contract. 3. The measurements indicated are supplied for guidance only and as such must be considered incorrect. Potential buyers are advised to recheck measurements before committing to any expense. 4. We have not tested any apparatus, equipment, fixtures or services and it is in the buyers interest to check the working condition of any appliances. 5. Where an EPC, or a Home Report (Scotland only) is held for this property, it is available for inspection at the branch by appointment. If you require a printed version of a Home Report, you will need to pay a reasonable production charge reflecting printing and other costs. 6. We are not able to offer an opinion either written or verbal on the content of these reports and this must be obtained from your legal representative. 7. Whilst we take care in preparing these reports, a buyer should ensure that his/her legal representative confirms as soon as possible all matters relating to title including the extent and boundaries of the property and other important matters before exchange of contracts.

Shipways is a trading name of Sequence (UK) Limited which is registered in England and Wales under company number 4268443, Registered Office is Cumbria House, 16-20 Hockliffe Street, Leighton Buzzard, Bedfordshire, LU7 1GN. VAT Registration Number is 500 2481 05.

Not for marketing purposes INTERNAL USE ONLY



0121 427 3264



harborne@shipways.co.uk



172 High Street, Harborne, BIRMINGHAM,
West Midlands, B17 9PP



shipways.co.uk