



THE GATEWAYS
CHELSEA

JACKSON-STOPS 

THE GATEWAYS CHELSEA, SW3

ASKING PRICE: £6,500 PCM

A family home set within a gated development, overlooking communal gardens, in the heart of Chelsea. The property benefits from wooden flooring and two spacious receptions.

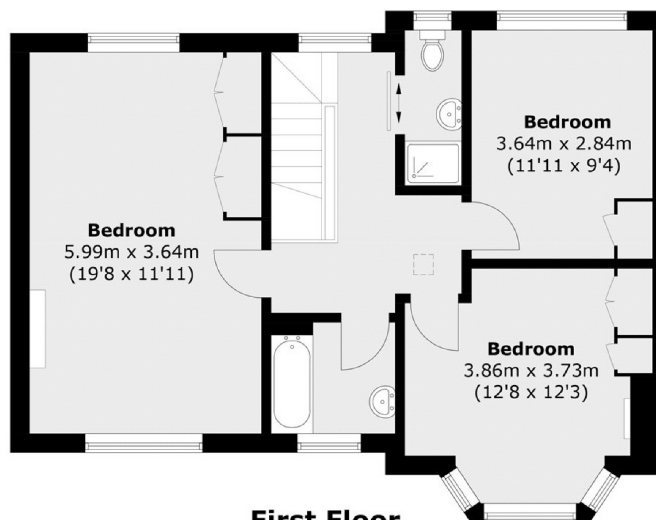
Just 0.5 miles from Sloane Square Underground Station, 0.6 miles from South Kensington Underground Station, 0.2 miles from the Kings Road and 459 feet from Chelsea Common.



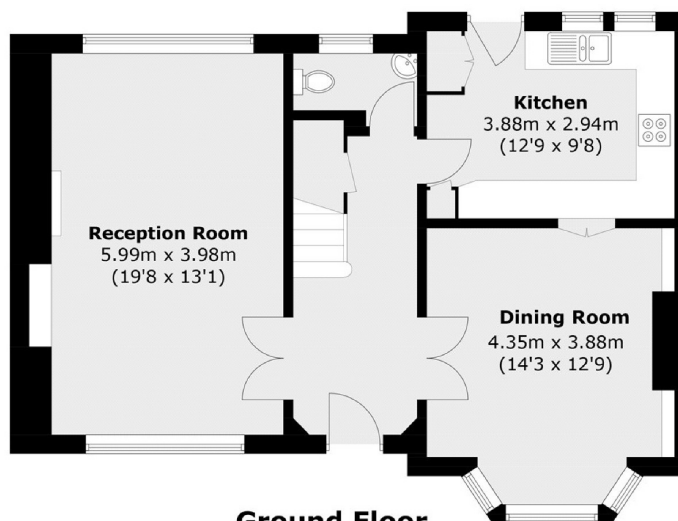
KEY FEATURES

- Three Bedrooms
- Two Bathrooms
- Reception
- Dining Room
- Kitchen
- Tax Band: H





First Floor



Ground Floor

Total area (approx.): 128.4 sq. m (1,382 sq. ft)

Energy Rating: D. We aim to make our particulars both accurate and reliable. However they are not guaranteed; nor do they form part of an offer or contract. If you require clarification on any points then please contact us, especially if you are travelling some distance to view. Please note that appliances and heating systems have not been tested and therefore no warranties can be given as to their good working order.

ASKING PRICE: £6,500 PCM

PIMLICO

020 7828 4243

pimlicolettings@jackson-stops.com

jackson-stops.co.uk

JACKSON-STOPS 