

SNELLERS

ESTATE AGENTS



Wooldridge Close, TW14

£140,000

Offered to the market with no onward chain is this well presented, two double bedroom ground floor apartment measuring approximately 666 sq.ft of living space including a private terrace. The property is ideal for both first time buyers or Investors.

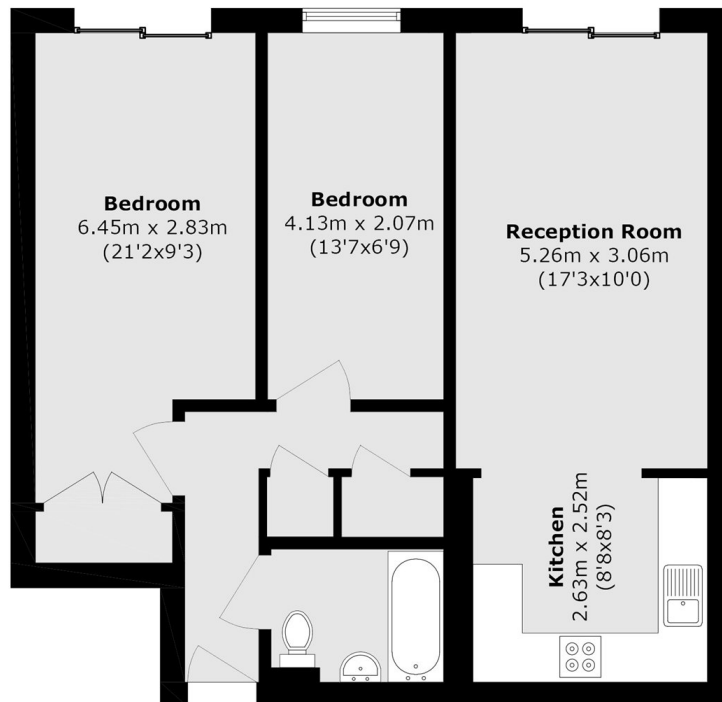
EITHER 60% SHARED OWNERSHIP AT £140,000 or 100% OWNERSHIP AT £229,950 ARE AVAILABLE TO PURCHASE.

Wooldridge Close is a popular residential development within easy reach of local amenities and transport links.

- Ground Floor • Two Double Bedrooms • Ideal First Purchase •
- Private Terrace • 60% Share or 100% Ownership • No Chain •

SNELLERS

ESTATE AGENTS



Total area (approx.): 61.9 sq. m (666.3 sq. ft)

Snellers Hampton Hill Sales
197-201 High Street
Hampton Hill
TW12 1NL
020 8783 0083
hamptonsales@snellers.co.uk

Energy Rating: C We aim to make our particulars both accurate and reliable. However they are not guaranteed; nor do they form part of an offer or contract. If you require clarification on any points then please contact us, especially if you're traveling some distance to view. Please note that appliances and heating systems have not been tested and therefore no warranties can be given as to their good working order