



**Belgrave Gardens, London, N14 4TS**

**welcome to**  
**Belgrave Gardens, London**

Barnfields are delighted to offer for sale this superb semi-detached house with huge potential located within just a few moments walk of Oakwood Tube Station (Piccadilly Line). This versatile property provides a large outbuilding with plumbing in the rear garden ideal for a working from home scenario or gym and must be viewed to be fully appreciated!



### Large Entrance Hall

A spacious entrance hall with plenty of room for coats and storage.

### Inner Hallway

Laminate flooring, radiator.

### Downstairs Shower Room

Low level WC, corner step-in shower unit, hand basin with cupboards beneath, fully tiled walls and floor, window to side, spotlights.

### Through Lounge

28' 4" x 12' 1" ( 8.64m x 3.68m )

Laminate flooring, double glazed windows to front and French doors to rear, two radiators.

### Kitchen

12' 6" x 11' 5" ( 3.81m x 3.48m )

Range of fitted wall and base units with toning worktops, sink and drainer, built-in oven and microwave, tiled splashbacks, space for fridge/freezer, electric hob, tiled floor, spotlights, ceiling beams, tiled floor, open to:-

### Dining Room

24' 2" x 10' 6" ( 7.37m x 3.20m )

Tiled floor, range of built-in storage cupboards, radiator, glazed windows and door to:-

### Sun Room

21' 6" x 10' 2" ( 6.55m x 3.10m )

A split level room with tiled floor, double glazed windows and door to rear.

### First Floor

### Landing

Laminate flooring, loft hatch opening to loft storage space, double glazed window to front.

### Bedroom One

14' 2" x 12' 2" ( 4.32m x 3.71m )

Laminate flooring, double glazed windows to front, range of extensive built-in wardrobes and storage space, radiator, spotlights.



**view this property online** [barnfields.co.uk/Property/ENF103853](http://barnfields.co.uk/Property/ENF103853)



### Bedroom Two

14' 2" x 11' 10" ( 4.32m x 3.61m )

Laminate flooring, double glazed windows to rear, built-in wardrobes, radiator, spotlights.

### Bedroom Three

15' 5" x 11' 3" ( 4.70m x 3.43m )

Laminate flooring, double glazed windows to rear, built-in wardrobes, radiator.

### Shower Room

Low level WC, large step-in shower unit, hand basin with cupboards beneath, fully tiled walls and floor, window to front, spotlights, radiator.

### Outside

### Rear Garden

A Westerly facing low maintenance rear garden mostly paved with side gate leading to the front of the house, two storage sheds and access to:-

### Annexe Room One

22' 10" x 17' 8" ( 6.96m x 5.38m )

A large room with laminate flooring, double glazed door and windows to front, doorway opens to:-

### Annexe Room Two

16' 6" x 8' 10" ( 5.03m x 2.69m )

Laminate flooring and lighting.

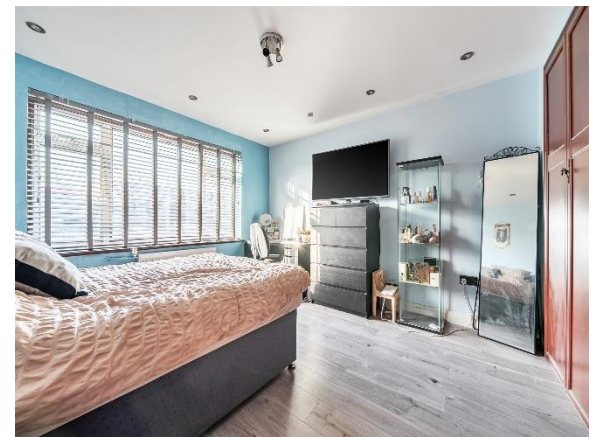
### Kitchenette / Shower Room

With base units and sink and drainer, laminate flooring, double glazed window to side, door to shower room with shower unit, hand basin and low level WC.

### Front Driveway

Brick paved driveway providing off-street parking for three cars.







welcome to

## Belgrave Gardens, London

- Large Rear Outbuilding With Plumbing
- Three Bedrooms
- 28ft Through Lounge
- Fitted Kitchen
- Dining Room

Tenure: Freehold EPC Rating: C  
Council Tax Band: G

offers in excess of

**£775,000**



Please note  
the marker  
reflects the  
postcode not  
the actual  
property

check out more properties at [barnfields.co.uk](https://www.barnfields.co.uk)



Property Ref:  
ENF105853 - 0004

1. MONEY LAUNDERING REGULATIONS Intending purchasers will be asked to produce identification documentation at a later stage and we would ask for your co-operation in order that there is no delay in agreeing the sale. 2. These particulars do not constitute part or all of an offer or contract. 3. The measurements indicated are supplied for guidance only and as such must be considered incorrect. Potential buyers are advised to recheck measurements before committing to any expense. 4. We have not tested any apparatus, equipment, fixtures or services and it is in the buyers interest to check the working condition of any appliances. 5. Where an EPC, or a Home Report (Scotland only) is held for this property, it is available for inspection at the branch by appointment. If you require a printed version of a Home Report, you will need to pay a reasonable production charge reflecting printing and other costs. 6. We are not able to offer an opinion either written or verbal on the content of these reports and this must be obtained from your legal representative. 7. Whilst we take care in preparing these reports, a buyer should ensure that his/her legal representative confirms as soon as possible all matters relating to title including the extent and boundaries of the property and other important matters before exchange of contracts.

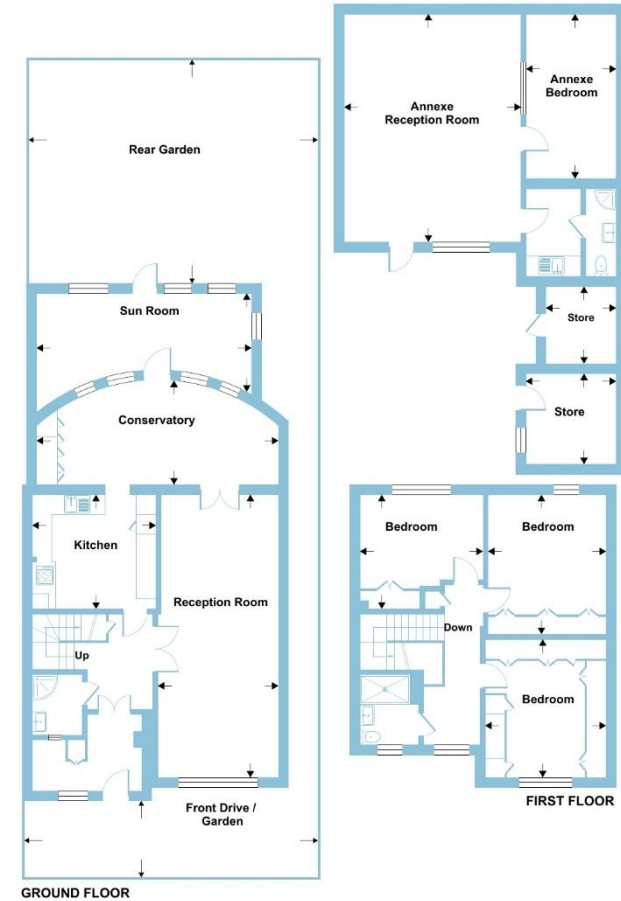
Barnfields is a trading name of Sequence (UK) Limited which is registered in England and Wales under company number 4268443, Registered Office is Cumbria House, 16-20 Hockliffe Street, Leighton Buzzard, Bedfordshire, LU7 1GN. VAT Registration Number is 500 2481 05.



## Belgrave Gardens, London, N14

Approximate Area = 1822 sq ft / 169.2 sq m  
Annexe = 652 sq ft / 60.6 sq m  
Outbuildings = 137 sq ft / 12.7 sq m  
Total = 2611 sq ft / 242.5 sq m

For identification only - Not to scale



GROUND FLOOR  
FIRST FLOOR

Floor plan produced in accordance with RICS Property Measurement 2nd Edition, incorporating International Property Measurement Standards (IPMS2 Residential). © nichecom 2026. Produced for Barnard Marcus. REF: 1440375



  
barnfields



**020 8363 3394**



[info@barnfields.com](mailto:info@barnfields.com)



1a Windmill Hill, Enfield, Middlesex, EN2 6SE



[barnfields.co.uk](https://www.barnfields.co.uk)