



Lynton Road  
NW6

---

FOR SALE  
LEASEHOLD

---

£1,100,000

---

For Sale via Camerons Stiff & Co.

An exquisite 2-bedroom garden apartment comprised on the Ground Floor of a charming Victorian terraced house on a coveted road in the heart of Queen's Park.

---







This listing offers an outstanding opportunity to acquire a design-led, turn-key apartment in a truly enviable location.

Upon entering, it becomes immediately apparent that the current owner has undertaken a meticulous interior and architectural design process - the apartment has been finished to an absolutely exceptional specification throughout.

The apartment boasts a large footprint that's both pragmatic and distinctly sociable. The rear is particularly impressive, comprising an expansive open-plan kitchen/reception that's abundant in natural light



throughout the day owing to a sunny westerly aspect and several skylights. Large double doors lead out to a large decked area that's perfect for entertaining - this seamless connection of external and internal space is arguably the defining feature of the listing.

Early viewing is thoroughly recommended.





- Two-bedroom garden apartment on the ground floor of a Victorian terraced house.
- Located on the sought-after Lynton Road in the heart of Queen's Park.
- Finished to an exceptional, design-led specification throughout.
- Spacious layout with a large overall footprint.
- Open-plan kitchen and reception area to the rear.
- Bright westerly-facing aspect.
- Large double doors opening onto a generous decked garden area.
- Seamless indoor-outdoor flow, ideal for entertaining.
- Close to Salusbury Road, Lonsdale Road, and excellent transport links.
- COUNCIL: Brent (C)



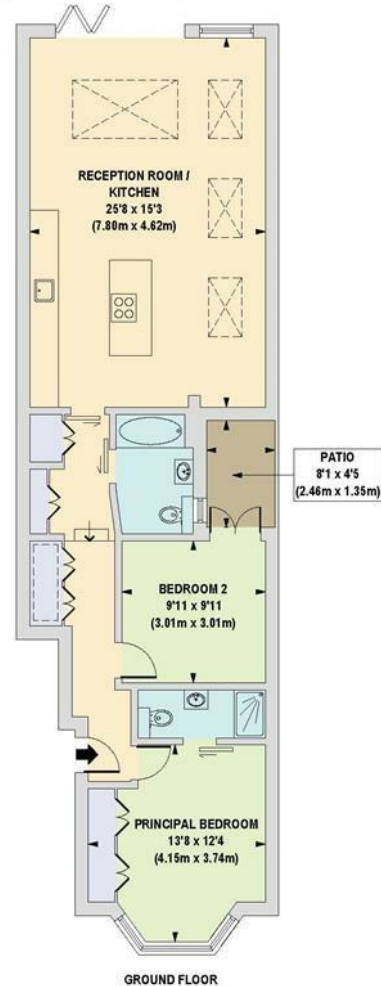
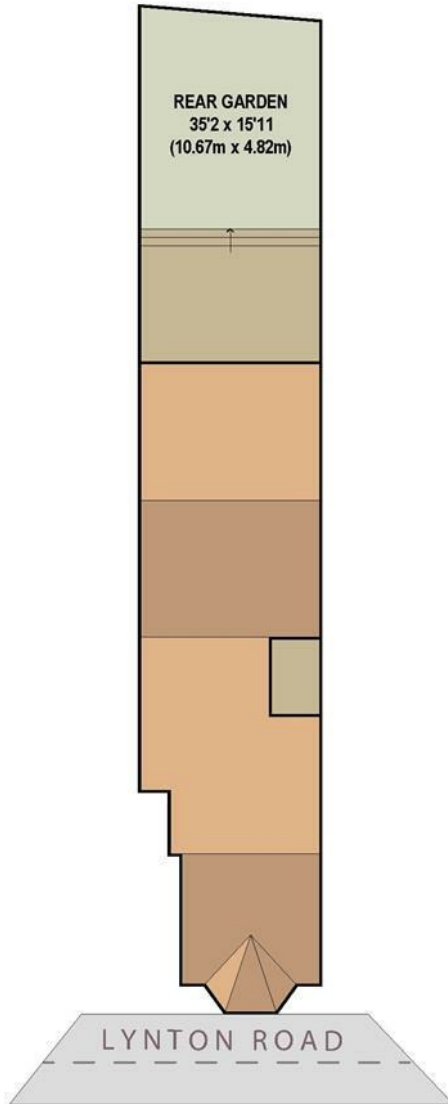


# LYNTON ROAD

London - NW 6



Approximate Gross Internal Floor Area  
878 sq. ft / 81.60 sq. m



Approx 878.00 sq ft

EPC: C

Brent (C)

Ref: 19778523

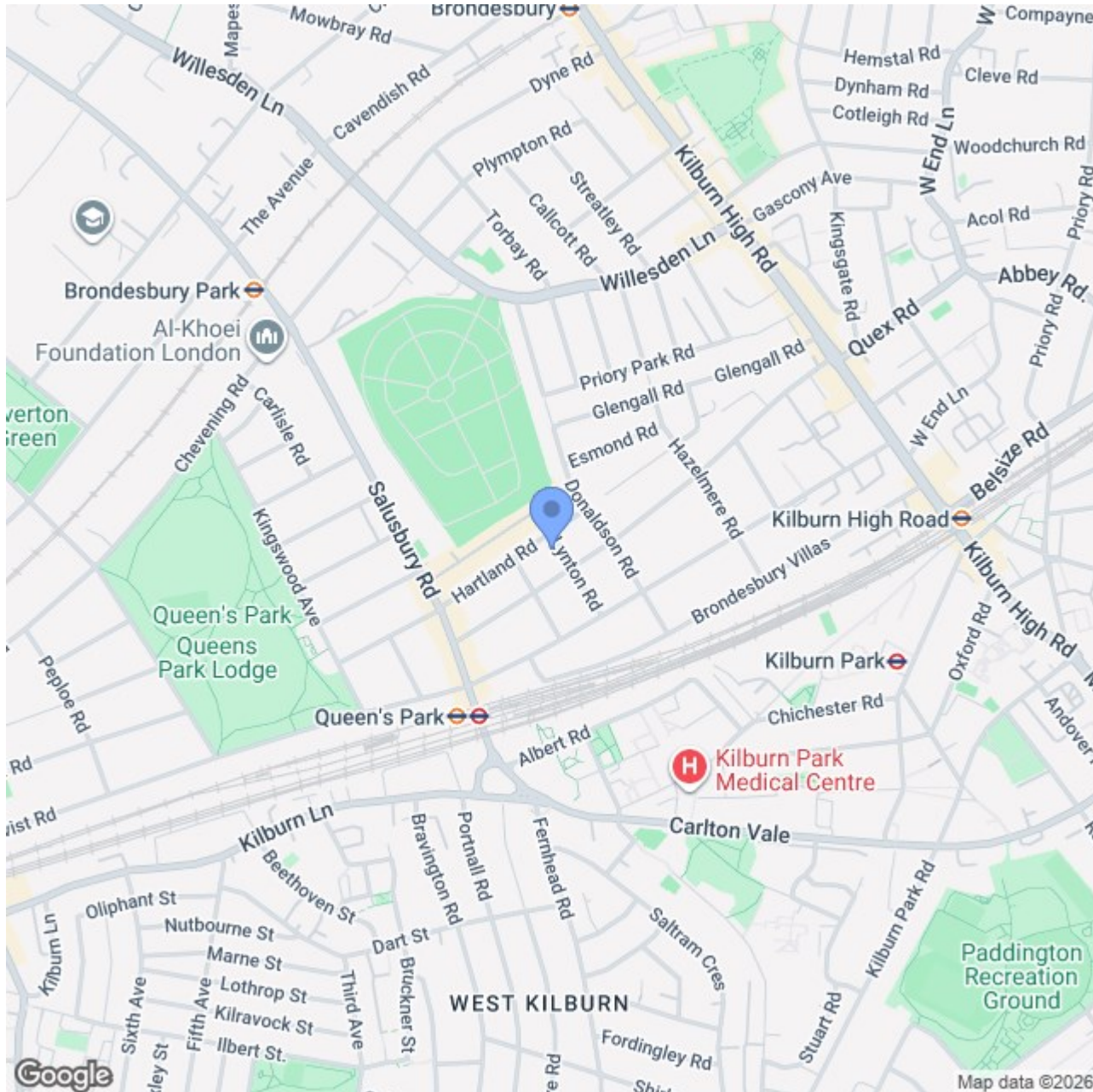
Floorplan is for illustrative purposes only and is not to scale. Every attempt has been made to ensure the accuracy of the floor plan shown, however all measurements, fixtures, fittings and data shown are an approximate interpretation for illustrative purposes only. Liability for errors, omissions or mis-statement through negligence or otherwise is hereby excluded.

# Location

---

Lynton Road is a sought-after, tree-lined residential street just East of Queen's Park. The property is ideally located to access the varied amenities of Salusbury and Lonsdale Road. Local transport links include Queen's Park (Bakerloo), Kilburn (Jubilee; Zone 2) and Brondesbury Park (Overground).

---



020 7328 2828 \* 020 8459 1133 – Sales

020 8450 9377 – Lettings

enquiries@cameronsstiff.co.uk

cameronsstiff.co.uk

**CAMERONS STIFF & Co.**  
EST. 1982



These particulars are a guide, not an offer contract. Property descriptions, photographs and floor plans are not taken as statements or representations of fact. Although every effort has been taken to ensure measurements, provided are as accurate as possible, they are to be assumed approximate and not to scale. Prospective purchasers must verify the accuracy of the information provided here through private means. Camerons Stiff & Co. does not give any representations or warranties, nor does Camerons Stiff & Co. represent the vendor legally. Camerons Stiff & Co. assume no liability, for any costs, losses or expenses incurred by the vendor or a prospective purchaser relating to any transaction regarding this property.

©Camerons Stiff & Co. 2025 All rights reserved.

