



South Hill Rise, Leeds LS10 4SQ

welcome to

South Hill Rise, Leeds

PERFECT FTB/YOUNG COUPLE/INVESTOR, NO ONWARD CHAIN, TWO BEDROOM SEMI DETACHED accommodation, DRIVEWAY, GARAGE, easy to maintain GARDENS to front and rear, LIVING ROOM, KITCHEN, CONSERVATORY/UTILITY, HOUSE BATHROOM. Good access to motorway links.

Entrance Hall

uPVC double glazed door to the front, gas central heating radiator.

Living Room

uPVC double glazed window to the front, gas central heating radiator.

Kitchen

Has a fully fitted kitchen with a range of wall and base units with complementary work surfaces over, incorporating sink and drainer, space for oven, washing machine and fridge freezer, part tiled walls, storage cupboard, gas central heating radiator.

Conservatory/Utility

uPVC double glazed windows and door leading to the rear.

First Floor Landing

Storage cupboard, loft access. Access to both bedrooms and the house bathroom.

Bedroom One

uPVC double glazed window to the rear, gas central heating radiator.

Bedroom Two

uPVC double glazed window to the front, gas central heating radiator, fitted wardrobes.

House Bathroom

A three piece bathroom suite comprising of a shower cubicle, low level flush WC, wash hand basin, tiled walls, gas central heating radiator, uPVC double glazed window to the side.

Exterior

Graveled area to the front and to the rear is a an

enclosed paved garden with outside tap.

Garage

Metal up and over door to the front, wooden door to the rear.





view this property online williamhbrown.co.uk/Property/MLY111829



welcome to

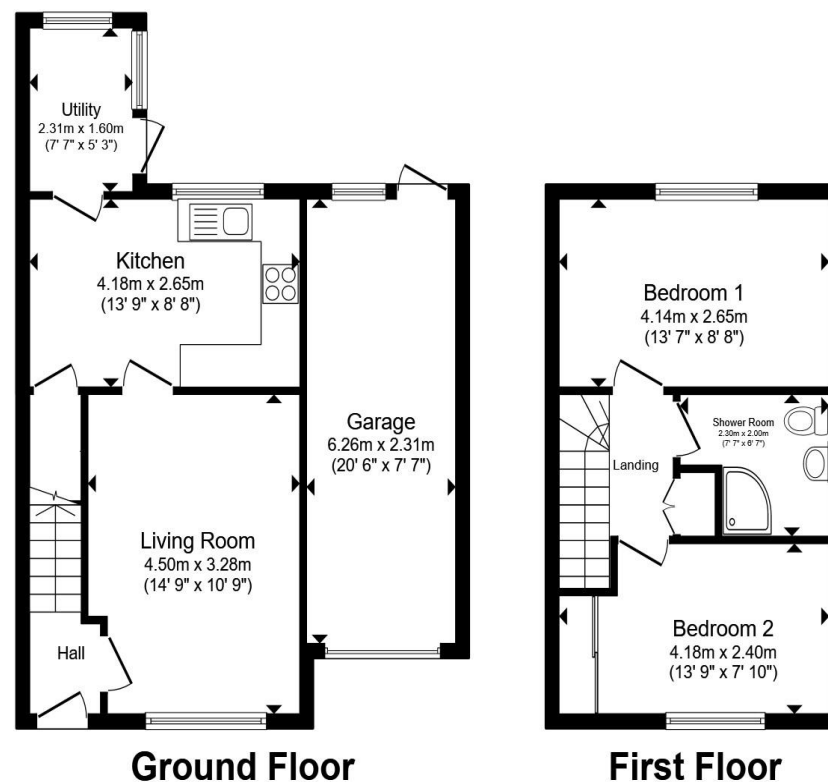
South Hill Rise, Leeds

- Two bedroom semi detached accommodation
- No onward chain
- Gardens to both front and rear
- Conservatory/utility
- Driveway and garage

Tenure: Freehold EPC Rating: D

Council Tax Band: B

£190,000



Total floor area 79.6 m² (856 sq.ft.) approx

This floor plan is for illustrative purposes only. It is not drawn to scale. Any measurements, floor areas (including any total floor area), openings and orientation are approximate. No details are guaranteed, they cannot be relied upon for any purpose and they do not form part of any agreement. No liability is taken for any error, omission or misstatement. A party must rely upon its own inspection(s). Powered by www.propertybox.io



view this property online williamhbrown.co.uk/Property/MLY111829



Property Ref:
MLY111829 - 0003

1. MONEY LAUNDERING REGULATIONS Intending purchasers will be asked to produce identification documentation at a later stage and we would ask for your co-operation in order that there is no delay in agreeing the sale. 2. These particulars do not constitute part or all of an offer or contract. 3. The measurements indicated are supplied for guidance only and as such must be considered incorrect. Potential buyers are advised to recheck measurements before committing to any expense. 4. We have not tested any apparatus, equipment, fixtures or services and it is in the buyers interest to check the working condition of any appliances. 5. Where an EPC, or a Home Report (Scotland only) is held for this property, it is available for inspection at the branch by appointment. If you require a printed version of a Home Report, you will need to pay a reasonable production charge reflecting printing and other costs. 6. We are not able to offer an opinion either written or verbal on the content of these reports and this must be obtained from your legal representative. 7. Whilst we take care in preparing these reports, a buyer should ensure that his/her legal representative confirms as soon as possible all matters relating to title including the extent and boundaries of the property and other important matters before exchange of contracts.

William H Brown is a trading name of Sequence (UK) Limited which is registered in England and Wales under company number 4268443, Registered Office is Cumbria House, 16-20 Hockliffe Street, Leighton Buzzard, Bedfordshire, LU7 1GN. VAT Registration Number is 500 2481 05.

 william h brown



0113 253 7100



Morley@williamhbrown.co.uk



80 Queen Street, Morley, LEEDS, West Yorkshire, LS27 9BP



williamhbrown.co.uk