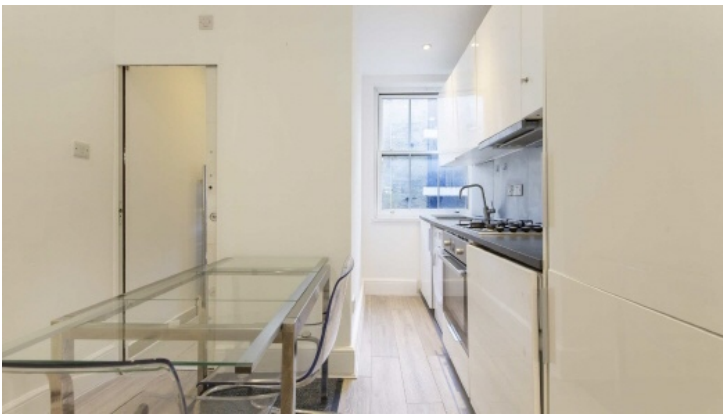


Frank Harris & Co.



Pollard House, N1

£3,150 pcm

A bright and spacious two-bedroom apartment set within a charming period mansion block moments from King's Cross, with an open-plan kitchen and reception room.

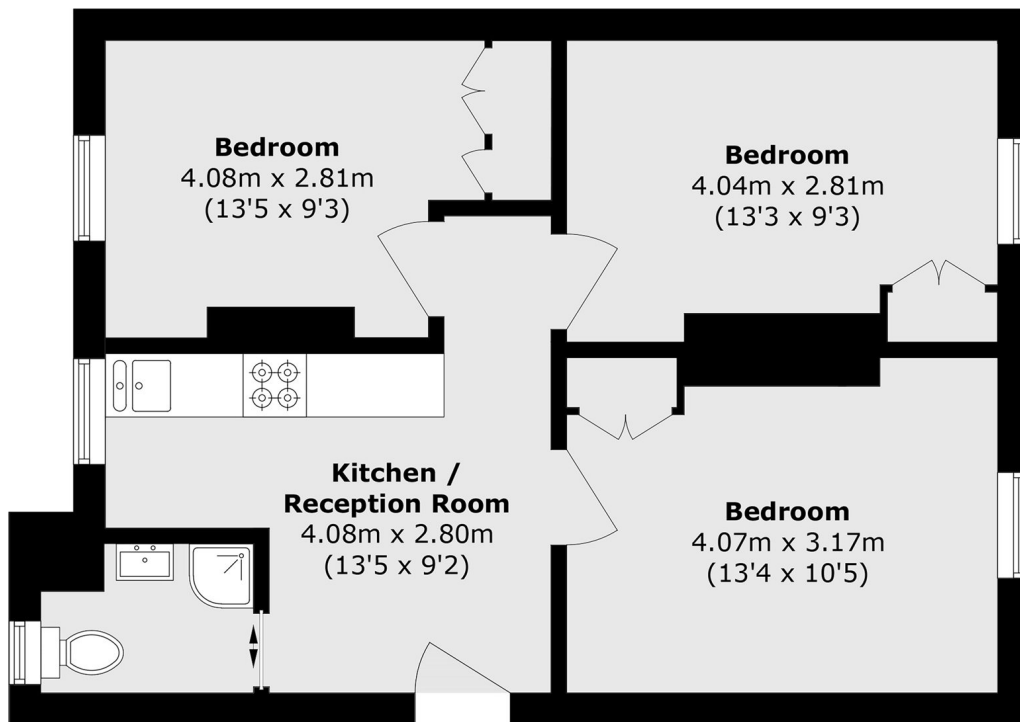


Pollard House is ideally situated on Northdown Street, just a short walk from King's Cross and St Pancras International, offering superb transport links via six Tube lines, National Rail, and Eurostar services. Close to Coal Drops Yard and Granary Square, where designer shops, cafés, restaurants, and cultural spaces create a lively, modern atmosphere.

- King's Cross • Two Bedroom • Period Mansion Block •
- Open Plan Kitchen •



Frank Harris & Co.



Total area (approx.): 52.9 sq. m (569.4 sq. ft)

Frank Harris & Co. Bloomsbury and Kings Cross

81 Marchmont Street,

London, WC1N 1AL

020 7387 0077

bloomsburylettings@frankharris.co.uk

Energy Rating: . We aim to make our particulars both accurate and reliable. However they are not guaranteed; nor do they form part of an offer or contract. If you require clarification on any points then please contact us, especially if you're traveling some distance to view. Please note that appliances and heating systems have not been tested and therefore no warranties can be given as to their good working order.

