

Frank Harris & Co.



Fitzroy Street, W1T

£3,100 pcm

A well-proportioned two double bedroom second floor apartment (with lift) in a purpose-built block in the heart of Fitzrovia. The accommodation comprises; reception room, modern kitchen, two double bedrooms..

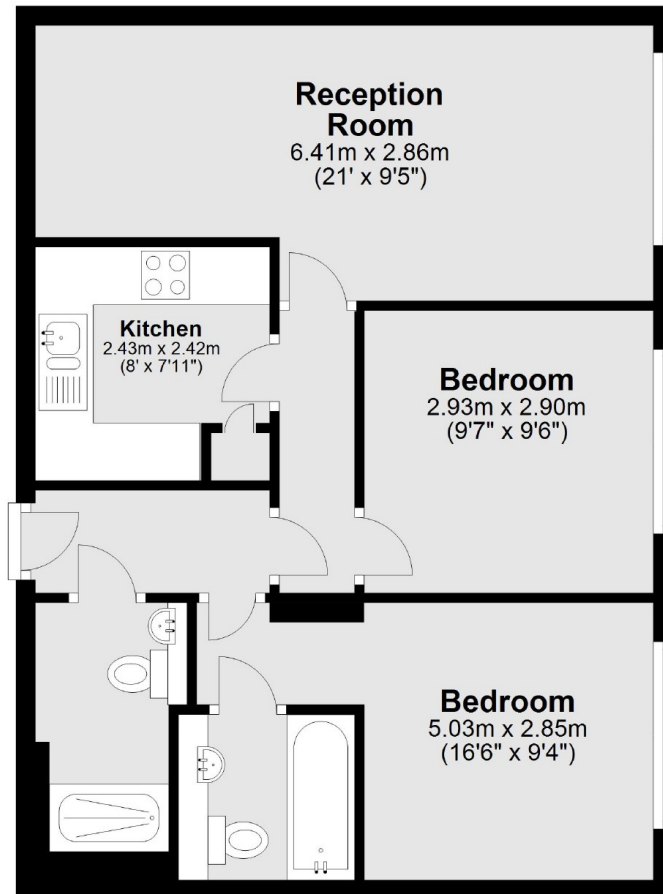


Sovereign House is located just off Charlotte Street with it's ample supply of popular restaurants and coffee shops. It's also 0.1 mile from Fitzroy Square, a beautiful and quiet Georgian Square.

- Two double bedrooms • Two bathrooms • Wooden floors •
- Separate kitchen • Third floor with lift • Central location •



Third Floor



Total area: approx. 57.7 sq. metres (620.6 sq. feet)

Frank Harris & Co. Bloomsbury and Kings Cross
81 Marchmont Street, London,
WC1N 1AL
020 7387 0077
bloomsburylettings@frankharris.co.uk

Energy Rating: D. We aim to make our particulars both accurate and reliable. However they are not guaranteed; nor do they form part of an offer or contract. If you require clarification on any points then please contact us, especially if you're traveling some distance to view. Please note that appliances and heating systems have not been tested and therefore no warranties can be given as to their good working order.