

Lot 2

Flat C, 90 Coningham Road,  
Shepherds Bush, London, W12 8BH

By order of a major  
housing association



All enquiries Ref: Brian Grante



- Long leasehold second floor flat requiring updating
- Full vacant possession

**Location:**

The property is situated on Coningham Road close to the Uxbridge Road and Goldhawk Road in this popular residential part of Shepherds Bush. Shopping amenities are available locally along Goldhawk Road and Uxbridge Road, while Shepherd's Bush benefits from a regeneration scheme including new shops and several property developments. For example, the recent transformation of BBC TV centre into residential flats, offices, restaurants and bars and the opening of Soho House Members Club. This period property is located close to Brackenbury village and Ravenscourt Park with excellent transport links including Goldhawk Road London Underground Station (Circle, Hammersmith and City lines) and close to Shepherd's Bush London Underground Station (Central Line) and Overground. Road communications include the A40 and A4, both providing access to Central London to the east and the M25 Motorway to the west. Recreational pursuits can be found at Westfield Shopping Centre, the O2 Empire, The River Cafe, and numerous bars and restaurants locally.

**Accommodation:**

One bedroom, reception room, kitchen, bathroom/WC

**EPC rating:** C

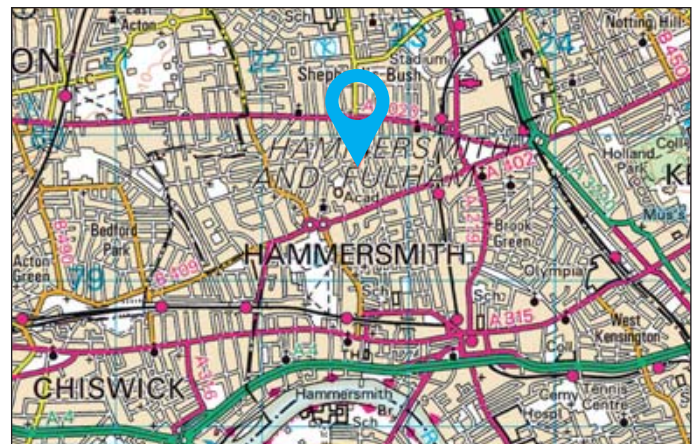
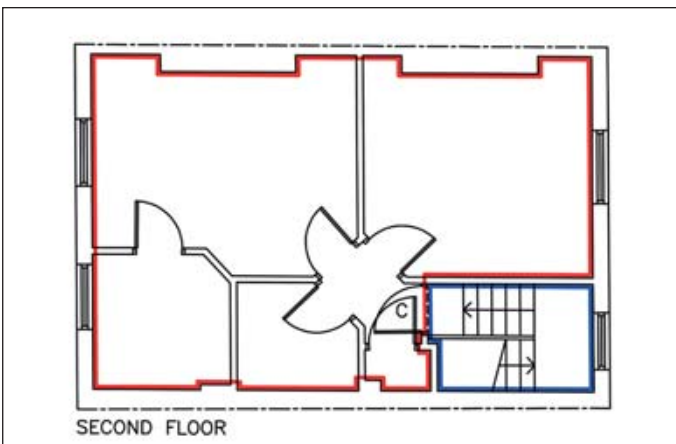
**Council Tax Band:** C

**Lease:**

To be sold on a new 125 year lease at a peppercorn ground rent

**To view:**

Strictly by arrangement with the auctioneer. Please see important advice for viewers on page 19 of this catalogue.



©Crown Copyright. Licence Number: ES 100020372