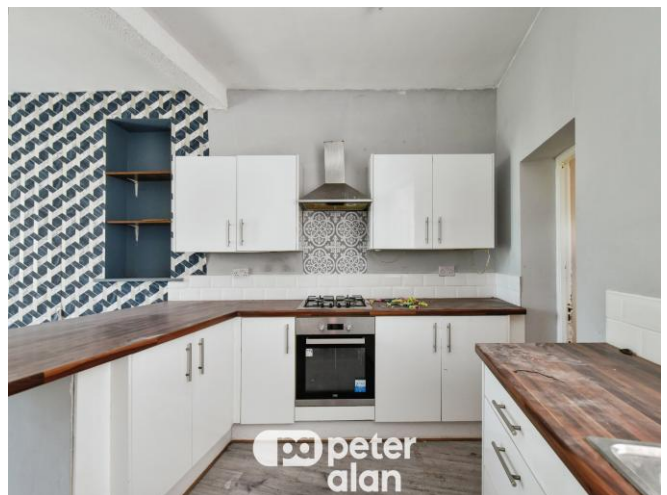




## Ivor Terrace, offers in excess of £149,000

- No onward chain
- Kitchen/diner with utility and pantry
- Ideal family home
- In need of some modernisation
- Versatile loft space
- Scenic views
- EPC Rating: E



 4  1  2



## About the property

This four-bedroom end-of-terrace property on Ivor Terrace in Dowlais is offered to the market with no onward chain and provides generous accommodation arranged over two floors. The property would be suitable for a range of purchasers, including first-time buyers, families, or those seeking an investment opportunity, and offers scope for modernisation, allowing a buyer to update the home to their own requirements.

On the ground floor, the property is entered via an entrance hallway which leads through to the main living areas. The accommodation includes a reception room positioned to the front of the property, providing a comfortable space for everyday living. There is a well-proportioned kitchen/diner offering room and leads to a utility room, providing additional storage and appliance space, along with a separate pantry for further practicality.

To the first floor, the property offers three double bedrooms and one single bedroom. The bathroom is located on this level and is accompanied by a separate WC. The bathroom also provides access to a versatile loft space. Externally, the property benefits from a rear courtyard, providing an easy-to-maintain outside area.

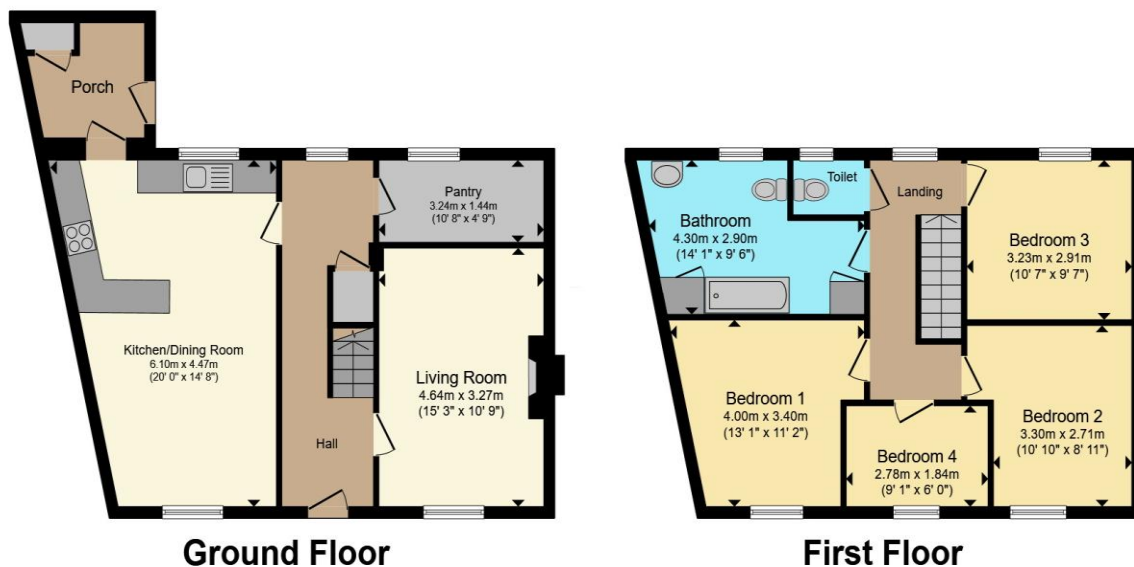


Accommodation

01685 722223

merthyrdfil@peteralan.co.uk

## Floorplan



Total floor area 119.1 m<sup>2</sup> (1,282 sq.ft.) approx

This floor plan is for illustrative purposes only. It is not drawn to scale. Any measurements, floor areas (including any total floor area), openings and orientation are approximate. No details are guaranteed, they cannot be relied upon for any purpose and they do not form part of any agreement. No liability is taken for any error, omission or misstatement. A party must rely upon its own inspection(s). Powered by [www.propertybox.io](http://www.propertybox.io)



## Important Information

Note while we endeavour to make our sales details accurate and reliable, if there is any point which is of particular interest to you, please contact the office and we will be pleased to confirm the position for you. We have not personally tested any apparatus, equipment, fixtures, fittings or services and cannot verify they are in working order or fit for their purposes. Nothing in these particulars is intended to indicate that carpets or curtains, furnishings or fittings, electrical goods (whether wired or not). Gas fires or light fittings or any other fixtures not expressly included form part of the property offered for sale. This computer generated Floorplan, if applicable, is intended as a general guide to the layout and design of the property. It is not to scale and should not be relied upon for dimensions. Tenure: We cannot confirm the tenure of the property as we have not had access to the legal documents. The buyer is advised to obtain verification from their solicitor or surveyor.

Peter Alan Limited is registered in England and Wales under company number 2073153, Registered Office is Cumbria House, 16-20 Hockliffe Street, Leighton Buzzard, Bedfordshire, LU7 1GN. VAT Registration Number is 500 2481 05. For activities relating to regulated mortgages and non-investment insurance contracts, Peter Alan Limited is an appointed representative of Connells Limited which is authorised and regulated by the Financial Conduct Authority. Connells Limited's Financial Services Register number is 302221. Most buy-to-let

