

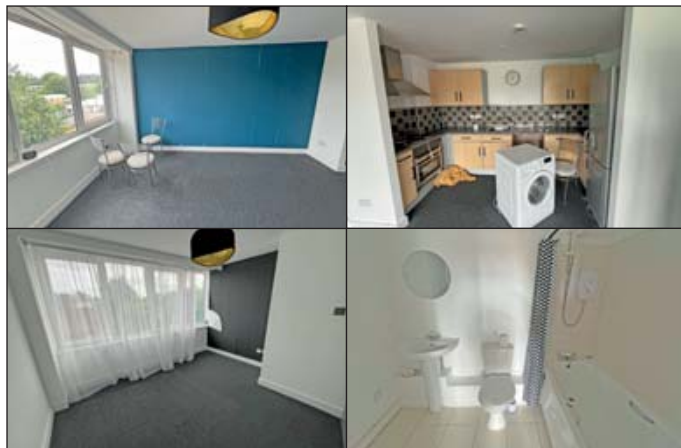
Lot 231

Flat 3, The Apex, 2 Oundle Road,  
Peterborough, Cambridgeshire, PE2 8AT

Upon  
instruction of  Countrywide



All enquiries Ref: Emma Hughes



## ■ Leasehold first floor flat

### Location:

The property is located on Oundle Road (A605). Shopping amenities can be found locally within Peterborough City Centre. Public transport links are available at Peterborough Train Station to the north along with a network of local bus services serving the surrounding areas. The property is served by road links including the A15 and A1139 both lying to the east. Recreational pursuits can be found at Fletton Avenue Park to the south east.

### Accommodation:

Principal bedroom with ensuite, one further bedroom, reception room open plan to kitchen, bathroom/wc

### EPC Rating: E

### Council Tax Band: C

### Lease:

Held on a lease for a term of 125 years from 01/01/2004.

### To view:

Strictly by arrangement with the auctioneers.