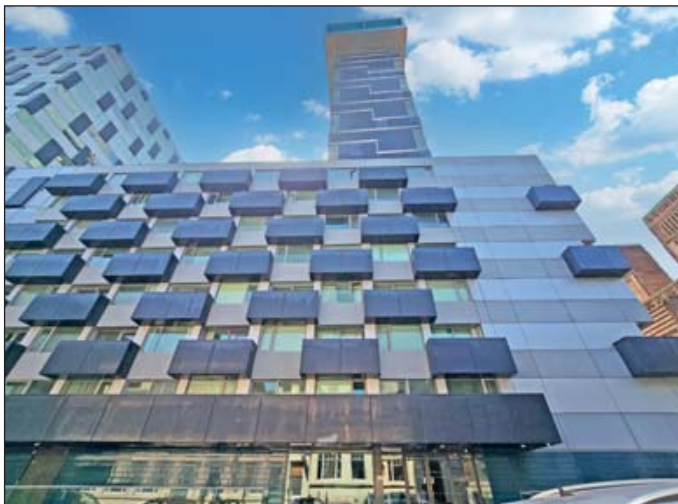


Lot 212

Apartment 80, 3 Rumford Place,
Chapel Street, Liverpool, L3 9BZ

By order of
the LPA Receivers



All enquiries Ref: Richard Vango

- Long leasehold seventh floor self contained flat
- Full vacant possession

Location:

The property is situated in Rumford Place which is accessed off Chapel Street. Public transport links include Moorfields and Liverpool Lime Street Train Stations together with local bus services serving the surrounding area. Road communications are provided by the A5052 and A41. A comprehensive range of shops cafes and restaurants are available in Liverpool City centre.



Accommodation:

Bedroom one with ensuite, bedroom two, reception room open to kitchen, shower room/WC

EPC rating: C

Council Tax Band: C

Lease:

Held on a lease for a term of 150 years from 1st January 2003 at a ground rent of £150 per annum

To view:

Strictly by arrangement with the auctioneers. Please see important advice for viewers on page 19 of this catalogue.