



Gabalfa Avenue, £350,000

- UNIQUE DETACHED PROPERTY
- FAMILY HOME
- PRIVATE REAR GARDEN
- GATED DRIVEWAY
- UTILITY ROOM AND 3 BATHROOMS
- EPC Rating: C



 3  1  1



About the property

Uniquely designed, detached house in an excellent location close to the Taff Trail and Llandaff North Village and a short drive to Whitchurch Village.

Situated just a short walk from Hailey Park and the Taff Trail, is this uniquely designed, three-bedroom detached home that offers an excellent family living environment.

Well-presented throughout, the property is spacious and well maintained. The accommodation begins with a welcoming entrance hallway, leading to two ground floor bedrooms, benefiting from an en suite. French doors from bedroom two provides direct access to the garden. Also situated on the ground floor is a useful utility room with storage and laundry space, family bathroom and separate access to the rear garden.

To the first floor is a lounge filled with natural light with French doors leading to a Juliet Balcony. To the left is a spacious kitchen diner. On the third floor is another double bedroom with en suit.

Externally, the property benefits from a driveway with gates providing off-road parking and security. The rear garden is level, enclosed, and designed for ease of maintenance, perfect for outdoor seating and entertaining.

Llandaff North is a popular village-style location in North Cardiff, particularly appealing to families thanks to its strong school catchment, excellent local amenities, and convenient transport links. The A470, A48, and M4 are all easily accessible, while Cardiff City Centre is within easy reach.



Accommodation

Entrance Hall

Double glazed door and window, stairs to first floor, cupboard, laminate floor, corridor and door to rear garden and laundry room.

Laundry Room

5' 10" x 5' 4" (1.78m x 1.63m)
Double glazed window to rear, plumbing for washing machine, inset stainless steel sink and drainer, radiator, laminate floor.

Bedroom One

22' Max x 13' 10" Max (6.71m Max x 4.22m Max)
Double glazed window to front, radiator, fitted storage, laminate floor,

Bedroom Two

13' 9" x 8' 11" (4.19m x 2.72m)
Double glazed french doors to rear garden, radiator, laminate floor, door to en suite.

En Suite

8' 9" x 3' 8" (2.67m x 1.12m)
Shower with sliding doors, w.c and wash hand basin, radiator, part tiled walls.

Bathroom

8' 9" x 5' 4" (2.67m x 1.63m)
Double glazed window to rear, panelled bath, low level w.c, extractor fan, radiator, light up vanity mirror, spotlights, laminate floor.

Landing

Wooden hand rail, open landing space, radiator, archway to:

Lounge

18' x 12' 4" (5.49m x 3.76m)
Double glazed patio doors to front with half Juliette balcony, feature fireplace with electric fire and stone surround, radiator, laminate floor, door to:

Study

8' 9" x 5' 1" (2.67m x 1.55m)
Laminate floor, power and light.

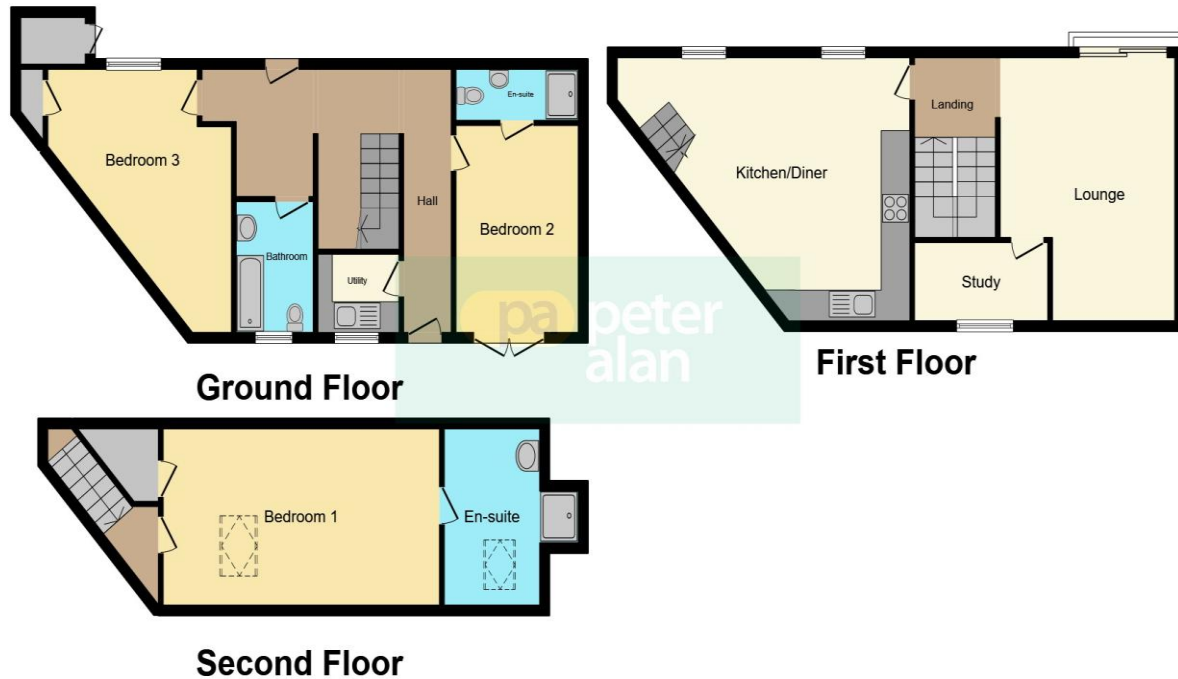
Kitchen/ Diner

23' 5" Max x 18' 1" Max (7.14m Max x 5.51m Max)
Two double glazed windows to front, fitted wall and base units with worktops incorporating sink with drainer and mixer tap, inset oven, cooker hood and four ring hob, downlights, integrated dishwasher, radiator, laminate floor. stairs to second floor.

02920 612328

whitchurch@peteralan.co.uk

Floorplan



This floorplan is for illustrative purposes only and is not drawn to scale. Measurements, floor-areas, openings and orientations are approximate. They should not be relied upon for any purpose and do not form any part of an agreement. No liability is taken for any error or mis-statement. All parties must rely on their own inspections.

Important Information

Note while we endeavour to make our sales details accurate and reliable, if there is any point which is of particular interest to you, please contact the office and we will be pleased to confirm the position for you. We have not personally tested any apparatus, equipment, fixtures, fittings or services and cannot verify they are in working order or fit for their purposes. Nothing in these particulars is intended to indicate that carpets or curtains, furnishings or fittings, electrical goods (whether wired or not). Gas fires or light fittings or any other fixtures not expressly included form part of the property offered for sale. This computer generated Floorplan, if applicable, is intended as a general guide to the layout and design of the property. It is not to scale and should not be relied upon for dimensions. Tenure: We cannot confirm the tenure of the property as we have not had access to the legal documents. The buyer is advised to obtain verification from their solicitor or surveyor.

Peter Alan Limited is registered in England and Wales under company number 2073153, Registered Office is Cumbria House, 16-20 Hockliffe Street, Leighton Buzzard, Bedfordshire, LU7 1GN. VAT Registration Number is 500 2481 05. For activities relating to regulated mortgages and non-investment insurance contracts, Peter Alan Limited is an appointed representative of Connells Limited which is authorised and regulated by the Financial Conduct Authority. Connells Limited's Financial Services Register number is 302221. Most buy-to-let

