



Pinkmove

Conway Road

£210,000

- On-street parking available
- Extended three-bedroom end terrace
- Spacious living accommodation
- Two first floor bedrooms (one with built-in storage)
- Additional loft conversion bedroom
- Low-maintenance enclosed rear garden
- Stylish modern kitchen extension
- EPC Rating: Awaited



3 1 1

Pinkmove

01633 746088
team@pinkmove.co.uk



About the property

An extended three-bedroom end terrace property, beautifully presented throughout and offering spacious, modern living accommodation, situated on Conway Road in Newport.

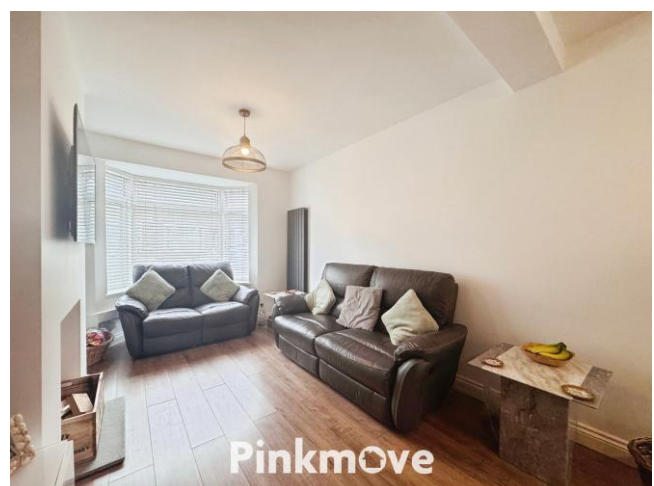
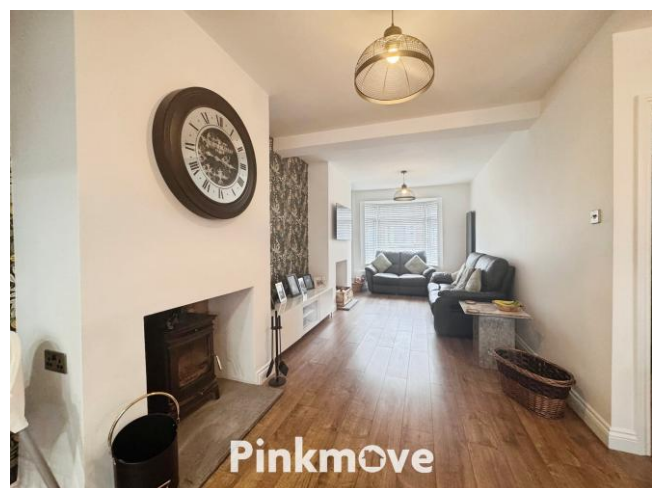
The property benefits from a welcoming entrance hall leading into a bright and comfortable living room, ideal for everyday living. To the rear, the home has been thoughtfully extended to create a stylish, contemporary kitchen with ample worktop space and storage, finished with sleek units and integrated appliances. The extension enhances the ground floor layout, providing excellent space for dining along with access to the rear garden.

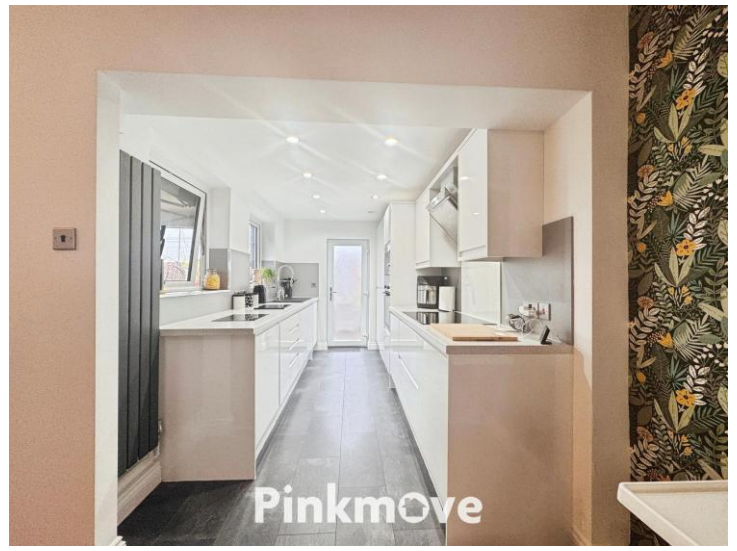
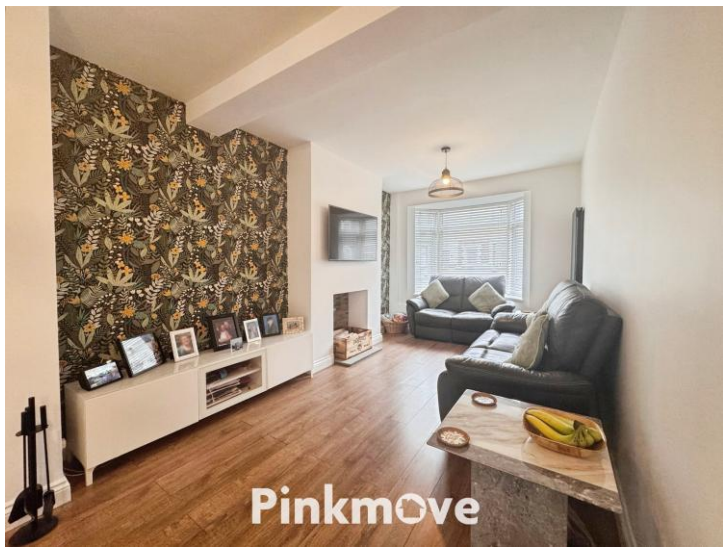
To the first floor are two well-proportioned bedrooms, one of which benefits from built-in storage, along with a modern family bathroom. A further bedroom is located in the converted loft, offering a versatile space ideal as a main bedroom, guest room or home office.

The property is tastefully decorated throughout, making it ready for a buyer to move straight into.

Externally, the rear garden is a fantastic feature, offering a generous, low-maintenance space with patio and artificial lawn—perfect for outdoor dining and entertaining. On-street parking is available to the front of the property.

Located on Conway Road, the property is within easy reach of local amenities, schools and transport links, making it an ideal purchase for families, first-time buyers or investors.





Accommodation

Lounge

Dining Room

Kitchen

Study Room

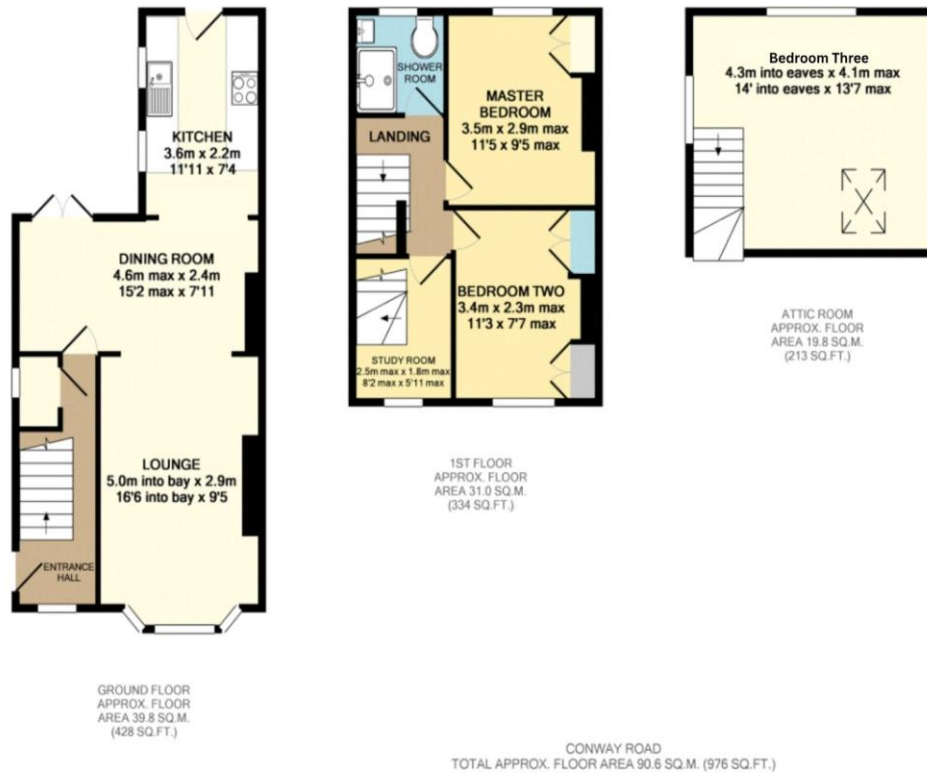
Master Bedroom

Bedroom 2

Bedroom 3

Shower Room

Floorplan



Important Information

Note while we endeavour to make our sales details accurate and reliable, if there is any point which is of particular interest to you, please contact the office and we will be pleased to confirm the position for you. We have not personally tested any apparatus, equipment, fixtures, fittings or services and cannot verify they are in working order or fit for their purposes. Nothing in these particulars is intended to indicate that carpets or curtains, furnishings or fittings, electrical goods (whether wired or not). Gas fires or light fittings or any other fixtures not expressly included form part of the property offered for sale. This computer generated Floorplan, if applicable, is intended as a general guide to the layout and design of the property. It is not to scale and should not be relied upon for dimensions. Tenure: We cannot confirm the tenure of the property as we have not had access to the legal documents. The buyer is advised to obtain verification from their solicitor or surveyor.

Peter Alan Limited is registered in England and Wales under company number 2073153, Registered Office is Cumbria House, 16-20 Hockliffe Street, Leighton Buzzard, Bedfordshire, LU7 1GN. VAT Registration Number is 500 2481 05. For activities relating to regulated mortgages and non-investment insurance contracts, Peter Alan Limited is an appointed representative of Connells Limited which is authorised and regulated by the Financial Conduct Authority. Connells Limited's Financial Services Register number is 302221. Most buy-to-let