



Station Road, Nassington Peterborough
£495,000 Freehold

**Sharman
Quinney**

Key Features



- Detached stone fronted period cottage
- Large utility room with built-in storage
- Stone build double garage and large outbuilding
- Two bathrooms
- Private enclosed garden

Situated in a highly desirable village setting, this fantastically presented three-bedroom detached period cottage effortlessly blends character features with practical living space, making it an ideal family home.

The property welcomes you into a warm and inviting lounge, complete with a feature fireplace and wood-burning stove, creating a cosy focal point. A separate beautifully decorated large dining room also benefitting from its own fireplace, provides the perfect setting for entertaining and family meals.

The kitchen is full of character, featuring distinctive red tiled flooring, and leads through to a large utility room with built-in cupboards and matching red tiled floor, offering excellent storage and functionality. Off the utility room is a ground-floor three-piece bathroom, fitted with a bath and

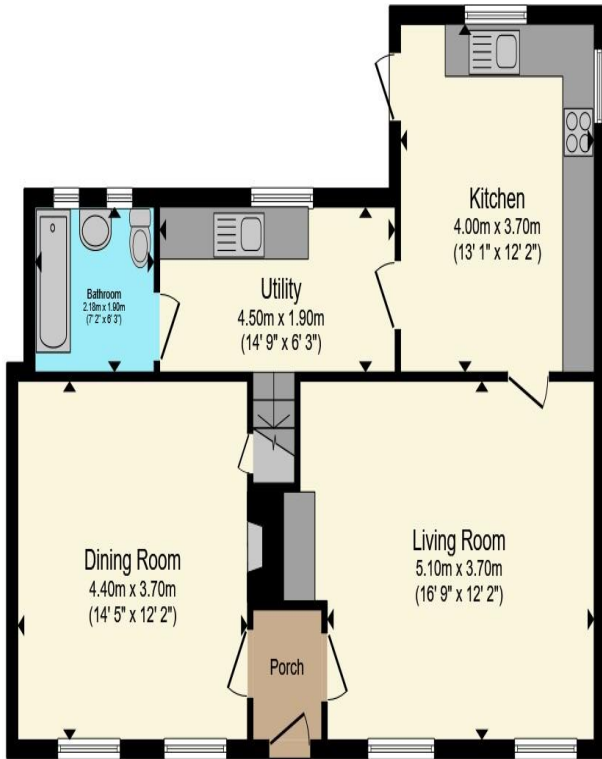


shower over.

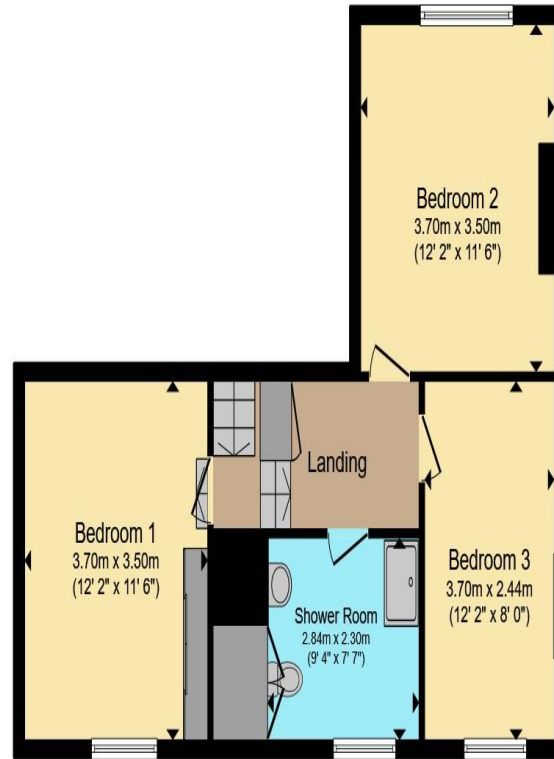
To the first floor, the property offers three good-sized bedrooms, all well-proportioned, alongside a modern three-piece family bathroom featuring a large walk-in shower.

Externally, the rear garden has been exceptionally well maintained, providing a private and attractive outdoor space. The garden also benefits from a stone-built double garage and additional outbuilding, ideal for storage, hobbies, or workshop use. The large gravel driveway which sits within the grounds of the property also benefits from an electric vehicle charging point, adding modern convenience to this charming home.





Ground Floor



First Floor

Total floor area 131.5 m² (1,415 sq.ft.) approx

This floor plan is for illustrative purposes only. It is not drawn to scale. Any measurements, floor areas (including any total floor area), openings and orientation are approximate. No details are guaranteed, they cannot be relied upon for any purpose and they do not form part of any agreement. No liability is taken for any error, omission or misstatement. A party must rely upon its own inspection(s). Powered by www.propertybox.io



To view this property call Sharman Quinney on:
01832 274567

Selling your property?

Contact us to arrange a **FREE** home valuation.

 01832 274567

 The Old Town Hall Market Place, Oundle, Peterborough, Cambridgeshire, PE8 4BQ

 oundle@sharmanquinney.co.uk

 www.sharmanquinney.co.uk



 SCAN ME



Sharman Quinney Holdings Limited is registered in England and Wales under company number 4174227, Registered Office is Cumbria House, 16-20 Hockliffe Street, Leighton Buzzard, Bedfordshire, LU7 1GN. VAT Registration Number is 500 2481 05.

1: These particulars do not constitute part or all of an offer or contract. 2: The measurements indicated are supplied for guidance only and as such must be considered incorrect. 3: Potential buyers are advised to recheck the measurements before committing to any expense. 4: Sharman Quinney has not tested any apparatus, equipment, fixtures, fittings or services and it is the buyers interests to check the working condition of any appliances. 5: Sharman Quinney has not sought to verify the legal title of the property and buyers must obtain verification from their legal representative. 6: Intending purchasers will be asked to produce identification documentation at a later stage and we would ask your co-operation in order that there will be no delay in agreeing the sale. Ref: OUN202833 - 0001

