

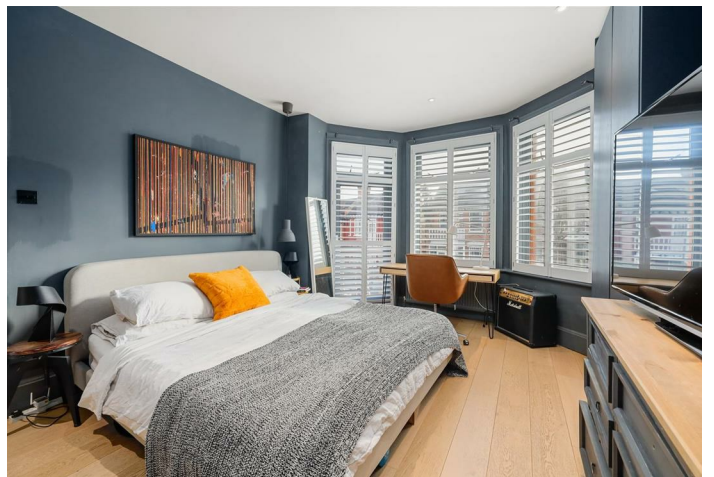


Normanby Road, NW10

£4,100 Per Month

AVAILABLE: A stylish three-bedroom Edwardian terraced house with a bright open-plan living space, modern kitchen, and private garden. Ideally located close to Dollis Hill station, Neasden station, local amenities, and Gladstone Park.

- Charming three-bedroom Edwardian terraced house.
- Bright open-plan reception with modern kitchen.
- Private rear garden, perfect for outdoor dining and entertaining.
- Close to Dollis Hill station, Neasden station & Gladstone Park.
- Deposit: £4,730.
- COUNCIL: Brent (E)



020 8450 9377 - 020 8459 1133
rentals@cameronsstiff.co.uk

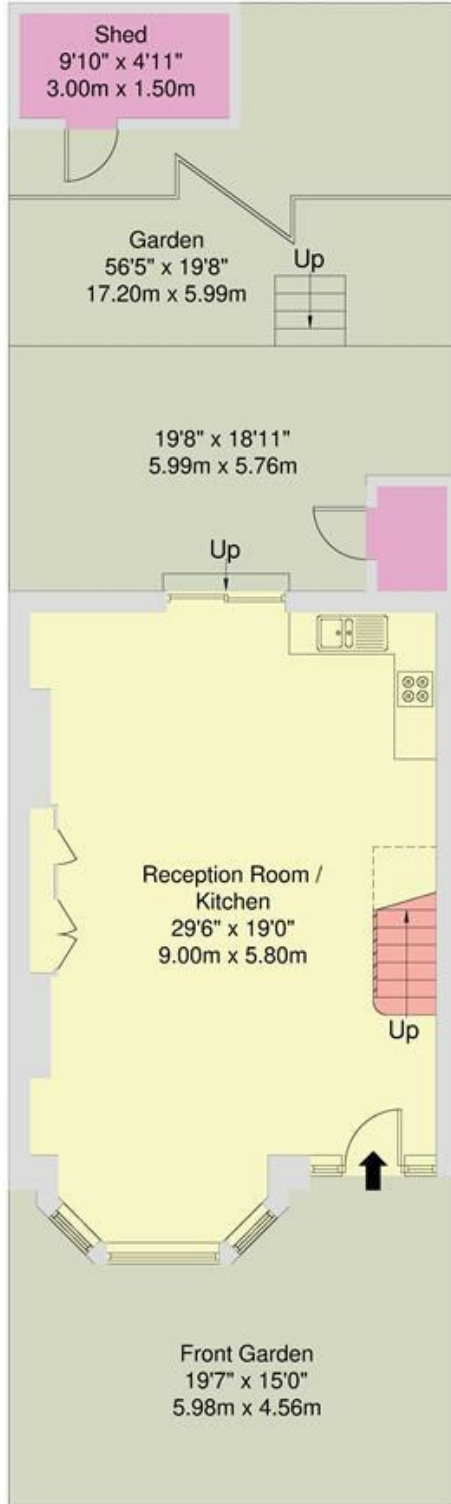
Normanby Road, NW10

Approximate Area = 96.6 sq m / 1040 sq ft

Shed = 6.0 sq m / 64 sq ft

Total = 102.6 sq m / 1104 sq ft

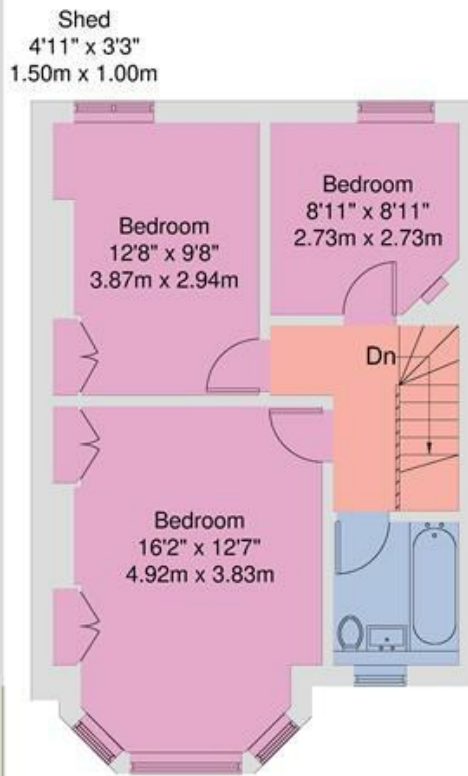
For Identification only - Not to Scale



GROUND FLOOR

EPC: D

Ref: 19638378



FIRST FLOOR

Disclaimer : Floorplan measurements are approximate and are for illustrative purposes only. While we do not doubt the floorplan accuracy and completeness, you or your advisors should conduct a careful, independent investigation of the property in respect of monetary valuation.

