



FONTAINE ROAD, SW16

£1,250,000

- Semi-detached home
- Four bedrooms
- Garden Outhouse
- Large garden
- The Rookery
- Energy rating: E





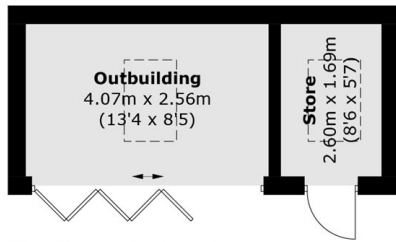
ABOUT THE HOME

A Semi-Detached Edwardian home with many original features and large private garden. This house has ample living space whilst also having potential to extend further and is located close to Streatham Common.

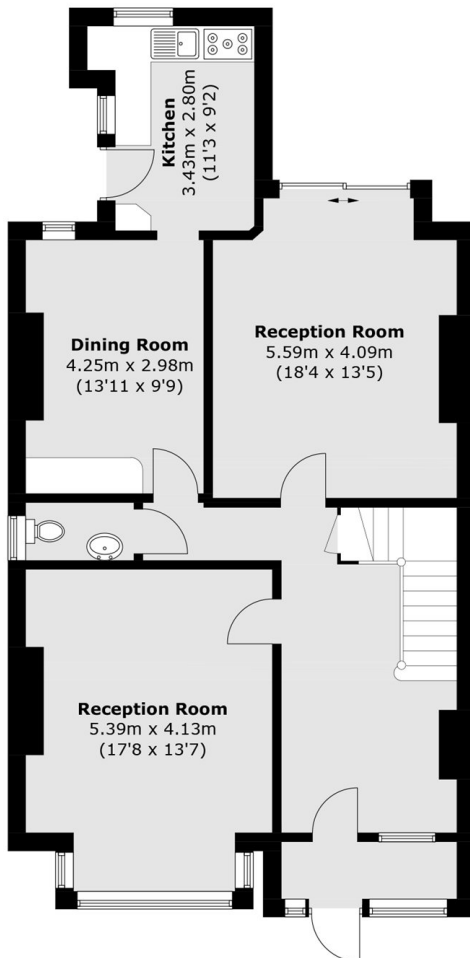
Situated on a sought after residential road in the heart of Streatham Common, this property is ideally located within close proximity to the social hub of Streatham High Road. These include; numerous bars, independent coffee shops, restaurants, several large supermarkets, and leisure centre. Commuters are able to access London Bridge, Blackfriars and Victoria with swift services from the two local railway stations and regular bus routes to Brixton tube station.



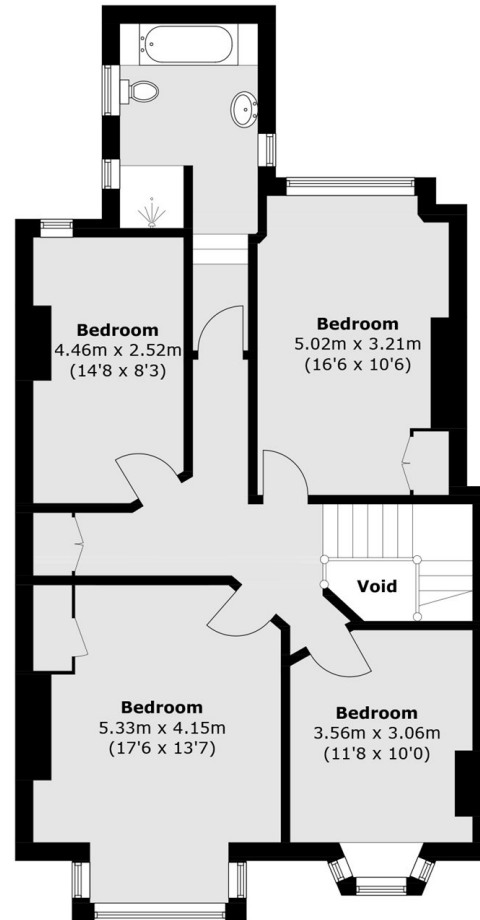




(Not Shown In Actual
Location / Orientation)



Ground Floor



First Floor

Approx Internal Area (approx.): 172.4 sq. m (1,855.7 sq. ft)
(Excluding Void)

Outbuilding (approx.): 15.5 sq. m (166.8 sq. ft)

JACKSONS STREATHAM

1-3 De Montfort Parade,
Streatham High Road,
Sales: 020 8487 3179
Lettings: 020 8487 3180

Energy Rating: E We aim to make our particulars both accurate and reliable. However they are not guaranteed; nor do they form part of an offer or contract. If you require clarification on any points then please contact us, especially if you're traveling some distance to view. Please note that appliances and heating systems have not been tested and therefore no warranties can be given as to their good working order.