



Moore Crescent, Netley Abbey, Southampton SO31 5BY

welcome to

Moore Crescent, Netley Abbey Southampton

* THREE BEDROOM END OF TERRACE HOUSE * KITCHEN/DINER * FAMILY BATHROOM * GENEROUS FRONT & REAR GARDENS * ON-STREET PARKING * GREAT FAMILY HOME * SOUGHT AFTER LOCATION * CLOSE TO LOCAL AMENITIES *

Front Garden

Pathway leading to access, mainly laid to lawn.

Entrance Hall

Double glazed window to the front aspect, gas radiator, stairs to first floor, two storage cupboards.

Lounge

11' 10" x 11' 7" (3.61m x 3.53m)

Double glazed window to the front aspect, carpet throughout.

Dining Area

11' 6" x 9' 5" (3.51m x 2.87m)

Double glazed window to the rear aspect, patio door leading to garden, opens onto;

Kitchen

8' 7" x 8' (2.62m x 2.44m)

Double glazed window to the rear aspect, wall and base cupboard units, tiled surrounds, stainless steel sink and drainer, 4 ring electric hob with cooker hood over, double oven, under counter space for white goods.

Landing

Access to all rooms, storage cupboards, carpet throughout, gas radiator.

Bedroom One

14' x 8' 10" (4.27m x 2.69m)

Double glazed window to the rear aspect, gas radiator, carpet throughout.

Bedroom Two

9' 4" x 8' 10" (2.84m x 2.69m)

Double glazed window to the front aspect, gas radiator, carpet throughout.

Bedroom Three

8' 8" x 6' 4" (2.64m x 1.93m)

Double glazed window to the front aspect, gas radiator, storage cupboard.

Bathroom

Fully tiled, panelled bath with overhead shower, vanity wash hand basin with storage below, low level w/c, double glazed window to the rear aspect.

Rear Garden

Low maintenance rear garden with paved seating area, lawn and outbuilding.





Situated in the highly sought-after location of Netley Abbey, this charming three bedroom end of terrace home offers an excellent opportunity for families and first-time buyers alike. Ideally positioned within close proximity to local amenities, schools, and transport links, the property also benefits from being just a short distance from the beautiful Royal Victoria Country Park.

The ground floor accommodation comprises a welcoming lounge alongside a fitted kitchen which opens into a separate dining area. Upstairs, the property offers three well-proportioned bedrooms and a family bathroom.

Externally, the home boasts generous front and rear gardens, offering plenty of outdoor space, and on-street parking is available. Early viewing is highly recommended to fully appreciate both the location and accommodation on offer.

Agents Note: Please note this property is non standard construction.



view this property online fox-and-sons.co.uk/Property/BIT113241



welcome to

Moore Crescent, Netley Abbey Southampton

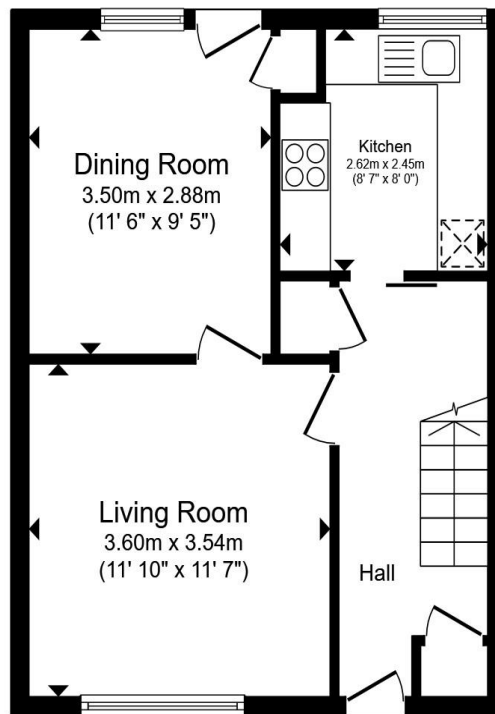
- End of Terrace House
- Three Bedrooms
- Generous Front & Rear Gardens
- Kitchen/Diner
- Family Bathroom

Tenure: Freehold EPC Rating: D

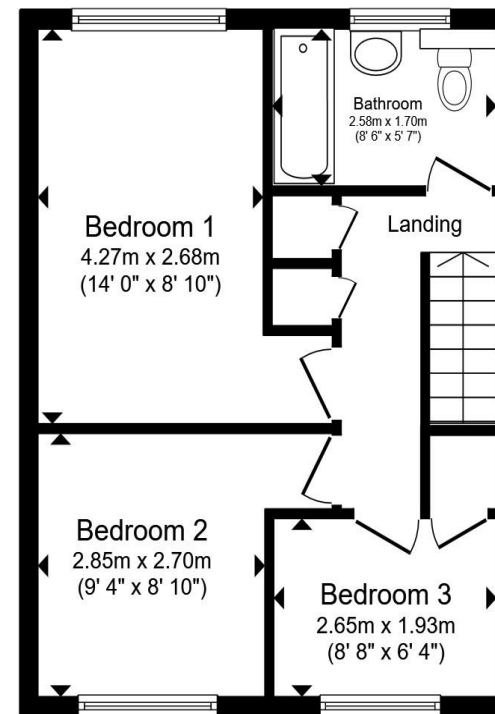
Council Tax Band: B

offers in excess of

£260,000



Ground Floor



First Floor

Total floor area 78.7 m² (847 sq.ft.) approx

This floor plan is for illustrative purposes only. It is not drawn to scale. Any measurements, floor areas (including any total floor area), openings and orientation are approximate. No details are guaranteed, they cannot be relied upon for any purpose and they do not form part of any agreement. No liability is taken for any error, omission or misstatement. A party must rely upon its own inspection(s). Powered by www.propertybox.io



view this property online fox-and-sons.co.uk/Property/BIT113241



Property Ref:
BIT113241 - 0003

1. MONEY LAUNDERING REGULATIONS Intending purchasers will be asked to produce identification documentation at a later stage and we would ask for your co-operation in order that there is no delay in agreeing the sale. 2. These particulars do not constitute part or all of an offer or contract. 3. The measurements indicated are supplied for guidance only and as such must be considered incorrect. Potential buyers are advised to recheck measurements before committing to any expense. 4. We have not tested any apparatus, equipment, fixtures or services and it is in the buyers interest to check the working condition of any appliances. 5. Where an EPC, or a Home Report (Scotland only) is held for this property, it is available for inspection at the branch by appointment. If you require a printed version of a Home Report, you will need to pay a reasonable production charge reflecting printing and other costs. 6. We are not able to offer an opinion either written or verbal on the content of these reports and this must be obtained from your legal representative. 7. Whilst we take care in preparing these reports, a buyer should ensure that his/her legal representative confirms as soon as possible all matters relating to title including the extent and boundaries of the property and other important matters before exchange of contracts.

Fox & Sons is a trading name of Sequence (UK) Limited which is registered in England and Wales under company number 4268443, Registered Office is Cumbria House, 16-20 Hockliffe Street, Leighton Buzzard, Bedfordshire, LU7 1GN. VAT Registration Number is 500 2481 05.



023 8044 6724



Bitterne@fox-and-sons.co.uk



390c Bitterne Road, Bitterne, SOUTHAMPTON,
Hampshire, SO18 5RS



fox-and-sons.co.uk