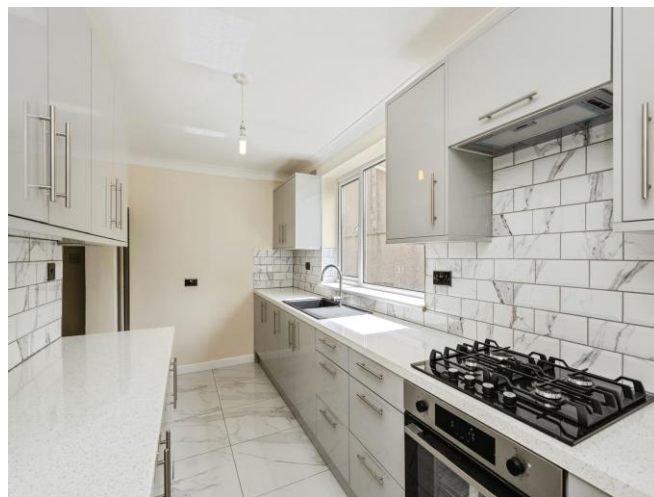




## Clase Road, offers in excess of £150,000

- Fully renovated throughout
- Three generous-sized bedrooms
- Master bedroom with en-suite shower room
- Modern fitted kitchen
- Bright and spacious accommodation
- No onward chain
- Utility Room
- EPC Rating: D



 3  2  1



## About the property

Situated in the highly desirable area of Morrision, this beautifully presented three-bedroom end-terrace property has been fully renovated throughout to an exceptional standard, offering modern and stylish living accommodation ready for immediate occupation.

Upon entering, the property boasts bright and welcoming accommodation, complemented by contemporary finishes throughout. The modern fitted kitchen has been thoughtfully designed to provide both style and practicality, featuring quality units and ample workspace for everyday living.

To the first floor are three generously sized bedrooms, all beautifully presented and offering comfortable living space. The spacious master bedroom benefits from the added luxury of a modern en-suite shower room

Externally, the property enjoys the advantages of an end-terrace position, providing additional privacy and outdoor space.



## Accommodation

**Hallway**

**Enclosed Rear Garden**

**Lounge**

21' 1" x 10' 10" ( 6.43m x 3.30m )

**Dining Room**

10' 11" x 10' 8" ( 3.33m x 3.25m )

**Kitchen**

14' 3" x 6' 11" ( 4.34m x 2.11m )

**Shower Room**

10' 8" x 5' 5" ( 3.25m x 1.65m )

**Bedroom One**

10' 7" x 8' 8" ( 3.23m x 2.64m )

**Bedroom One En Suite**

7' 5" x 3' 6" ( 2.26m x 1.07m )

**Bedroom Two**

13' 7" x 9' 6" ( 4.14m x 2.90m )

**Bedroom Three**

11' 2" x 7' 7" ( 3.40m x 2.31m )

01792 798201

morrison@peteralan.co.uk

## Floorplan

### Important Information

Note while we endeavour to make our sales details accurate and reliable, if there is any point which is of particular interest to you, please contact the office and we will be pleased to confirm the position for you. We have not personally tested any apparatus, equipment, fixtures, fittings or services and cannot verify they are in working order or fit for their purposes. Nothing in these particulars is intended to indicate that carpets or curtains, furnishings or fittings, electrical goods (whether wired or not), Gas fires or light fittings or any other fixtures not expressly included form part of the property offered for sale. This computer generated Floorplan, if applicable, is intended as a general guide to the layout and design of the property. It is not to scale and should not be relied upon for dimensions. Tenure: We cannot confirm the tenure of the property as we have not had access to the legal documents. The buyer is advised to obtain verification from their solicitor or surveyor.

Peter Alan Limited is registered in England and Wales under company number 2073153, Registered Office is Cumbria House, 16-20 Hockliffe Street, Leighton Buzzard, Bedfordshire, LU7 1GN. VAT Registration Number is 500 2481 05. For activities relating to regulated mortgages and non-investment insurance contracts, Peter Alan Limited is an appointed representative of Connells Limited which is authorised and regulated by the Financial Conduct Authority. Connells Limited's Financial Services Register number is 302221. Most buy-to-let

