



Mardy Crescent, £290,000

- Four bedrooms including master with ensuite
-
-
- Extended semi-detached layout offering generous living space
-
-
- Two reception rooms - living room and



 4  1  2



About the property

A spacious and extended four-bedroom semi-detached home set in the highly sought-after Castle Park area of Caerphilly. This well-loved property offers generous living accommodation and represents an excellent opportunity for buyers looking to modernise and create a fantastic family home.

To the ground floor, the property comprises a porch, welcoming hallway, bright living room, separate dining room, fitted kitchen, practical utility room, and a cloakroom with WC.

The first floor features a central landing, four bedrooms including a master bedroom with ensuite, and a well-proportioned family bathroom.

Externally, the home benefits from a driveway, car port, and a garage with an extended rear section ideal for storage or workshop use. The enclosed rear garden offers a peaceful outdoor space with two ponds, a patio area, and plenty of scope for landscaping or further development.

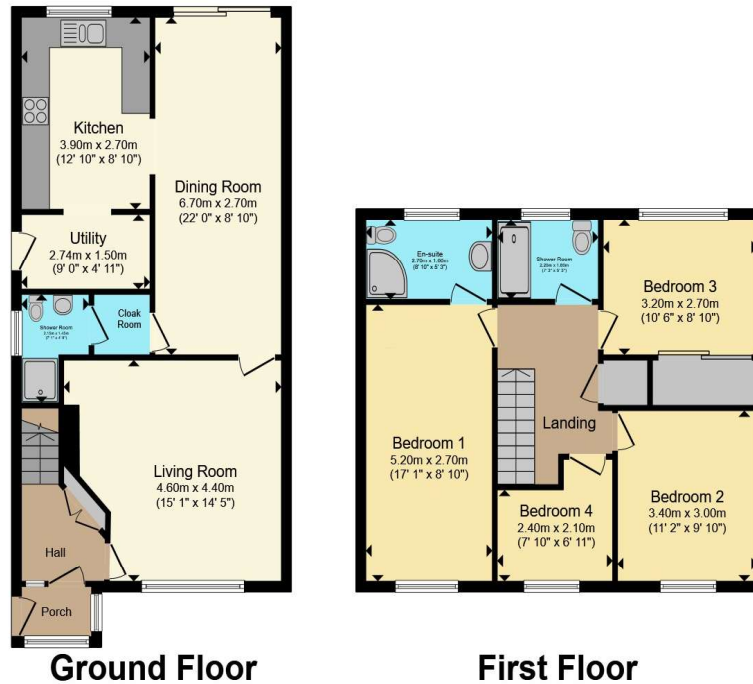
Located in a highly popular residential area, this property provides easy access to local schools, amenities, transport links, and Caerphilly town centre. With some modernisation, it has the potential to become a truly impressive family home.

Agents Note

The sale of this property is subject to receipt of Grant of Probate. Please obtain an update from the branch with regards to the potential timeframes involved.



Floorplan



Total floor area 123.8 m² (1,332 sq.ft.) approx

This floor plan is for illustrative purposes only. It is not drawn to scale. Any measurements, floor areas (including any total floor area), openings and orientation are approximate. No details are guaranteed, they cannot be relied upon for any purpose and they do not form part of any agreement. No liability is taken for any error, omission or misstatement. A party must rely upon its own inspection(s). Powered by www.propertybox.io

Important Information

Note while we endeavour to make our sales details accurate and reliable, if there is any point which is of particular interest to you, please contact the office and we will be pleased to confirm the position for you. We have not personally tested any apparatus, equipment, fixtures, fittings or services and cannot verify they are in working order or fit for their purposes. Nothing in these particulars is intended to indicate that carpets or curtains, furnishings or fittings, electrical goods (whether wired or not). Gas fires or light fittings or any other fixtures not expressly included form part of the property offered for sale. This computer generated Floorplan, if applicable, is intended as a general guide to the layout and design of the property. It is not to scale and should not be relied upon for dimensions. Tenure: We cannot confirm the tenure of the property as we have not had access to the legal documents. The buyer is advised to obtain verification from their solicitor or surveyor.