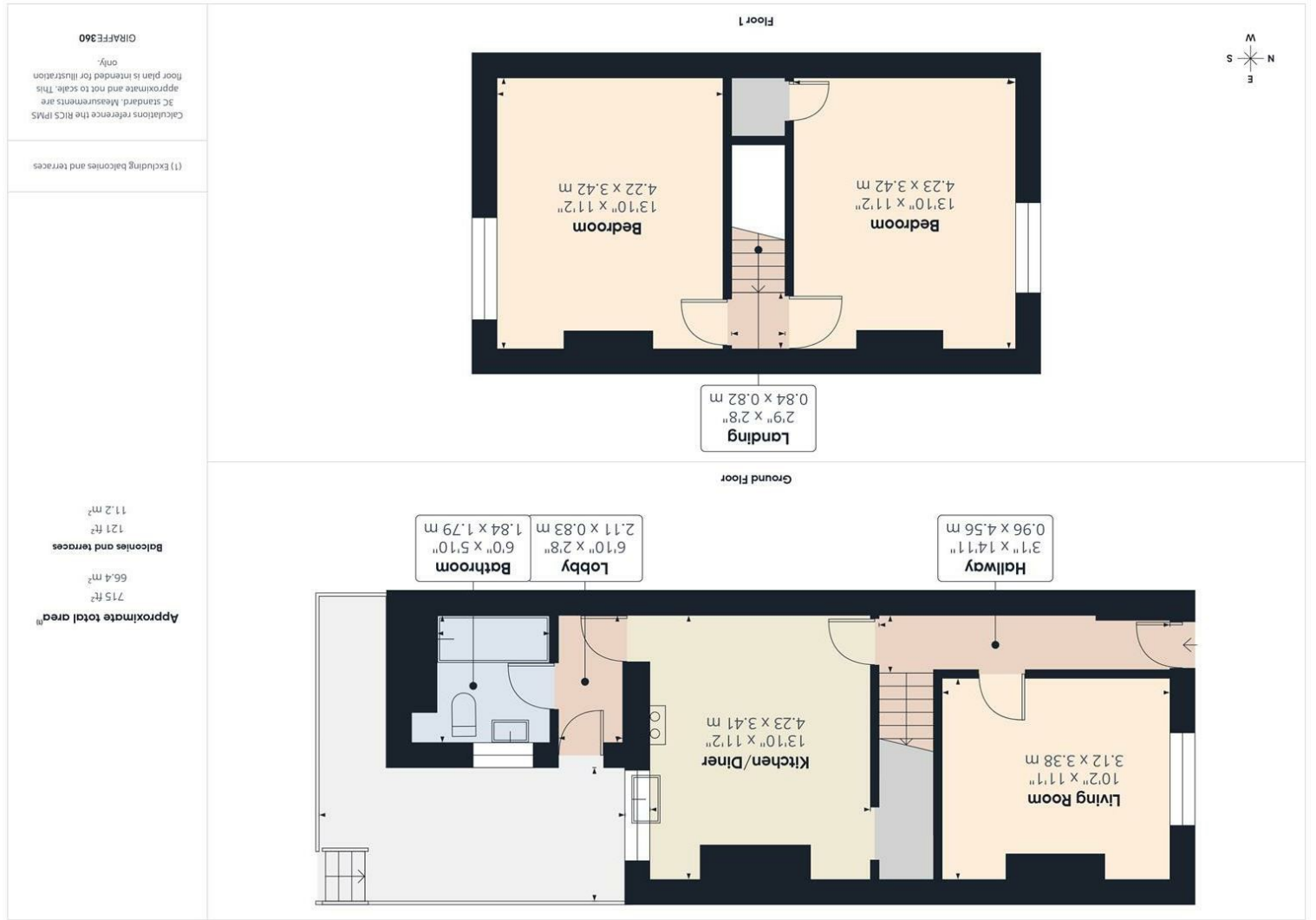


Consumer Protection from Unfair Trading Regulations 2008 We have not tested any apparatus, equipment, fixtures, fittings or services and so cannot verify that they are in working order or fit for purpose. You are advised to obtain verification from your solicitor or surveyor. References to the tenure of a property are based on information supplied by the seller. We have not had sight of the title documents and a buyer is advised to obtain verification from their solicitor. Items shown in photographs are not included unless specifically mentioned within the sales particulars, but may be available by separate negotiation. We advise you to book an appointment to view before embarking on any journey to see a property, and check its availability.



Hallway
 11'1" x 10'2" (3.38m x 3.12m)
 Living Room
 13'10" x 11'2" (4.23m x 3.41m)
 Kitchen/Diner
 6'0" x 5'10" (1.84m x 1.79m)
 Bathroom
 Landing
 13'10" x 11'2" (4.23m x 3.42m)
 Bedroom
 13'10" x 11'2" (4.22m x 3.42m)



- Living room
- Kitchen/diner
- Two double bedrooms
- Gas central heating
- Panoramic views
- Large mature rear garden
- No onward chain!

66 Hillside Road, St George, Bristol, BS5 7PA
Offers In Excess Of £280,000 Freehold

PROPERTY TYPE House - Terraced

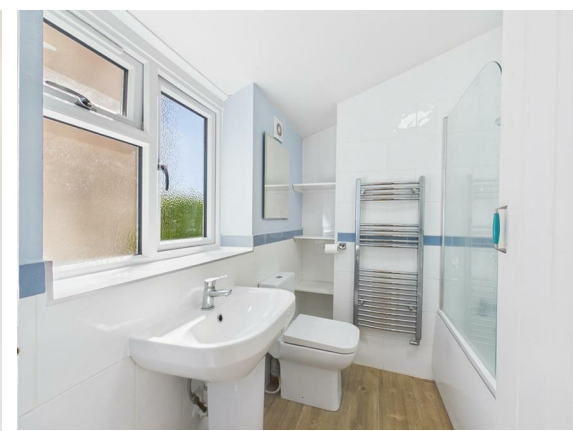
BEDROOMS 2

RECEPTION ROOMS 1

BATHROOMS 1

EPC RATING D

COUNCIL TAX BAND B



Two bedroom character home in popular location.

Entrance hallway, living room, kitchen/diner, and bathroom at the ground floor.

At the first floor are two double bedrooms.

With outstanding southerly panoramic views, the property boasts a surprisingly large mature rear garden.

Vacant possession.



the location

Popular location offering excellent access to local schools and amenities, and the extensive range of facilities available at nearby Kingswood town centre, Hanham high street and Church Road Redfield. There is a frequent local bus service and commutable to both Bristol and Bath. Bristol 2.2 miles Bath 9.0 miles

Offered for sale with no onward chain

just a thought...

Behind this modest, yet pleasant facade, is a bright spacious home with two double bedrooms, fabulous views and a great garden. This is one not to be missed!