



Barbers Row, Elmswell, BURY ST. EDMUNDS, IP30 9HG

welcome to

Barbers Row, Elmswell BURY ST. EDMUNDS

Discover this end-terraced home in Elmswell boasting two bedrooms, both featuring built in wardrobes, kitchen with ample space for appliances, a private rear garden with hosting patio and two resident parking spaces. Perfect for first time buyers or investors. Call to view now!

Auctioneer's Comments

This property is offered through Modern Method of Auction. Should you view, offer or bid your data will be shared with the Auctioneer, iamsold Limited. This method requires both parties to complete the transaction within 56 days, allowing buyers to proceed with mortgage finance (subject to lending criteria, affordability and survey). The buyer is required to sign a reservation agreement and make payment of a non-refundable Reservation Fee of 4.5% of the purchase price including VAT, subject to a minimum of £6600.00 including VAT. This fee is paid in addition to purchase price and will be considered as part of the chargeable consideration for the property in the calculation for stamp duty liability. Buyers will be required to complete an identification process with iamsold and provide proof of how the purchase would be funded. The property has a Buyer Information Pack containing documents about the property. The documents may not tell you everything you need to know, so you must complete your own due diligence before bidding. A sample of the Reservation Agreement and terms and conditions are contained within this pack. The buyer will also make payment of no more than £349 inc. VAT towards the preparation cost of the pack. Please confirm exact costs with the auctioneer. The estate agent and auctioneer may recommend the services of other providers to you, in which they will be paid for the referral. These services are optional, and you will be advised of any payment, in writing before any services are accepted. Listing is subject to a start price and undisclosed reserve price that can change.

Elmswell

Elmswell is a charming village located in the county of Suffolk, England, known for its rural beauty and community spirit. Situated amidst the picturesque Suffolk countryside, Elmswell offers a tranquil escape from the hustle and bustle of urban life.

The village of Elmswell is characterised by its quaint cottages, historic buildings, and scenic landscapes, providing residents with a peaceful and idyllic setting to call home. The village center features a mix of local shops, traditional pubs, and community facilities, fostering a close-knit and welcoming atmosphere.

Elmswell boasts a rich history, with historical sites and landmarks that offer a glimpse into the village's past. Residents and visitors can explore the surrounding countryside, with walking trails and green spaces that showcase the natural beauty of Suffolk.

Despite its rural setting, Elmswell is well-connected to nearby towns and cities, providing residents with easy access to a range of amenities and services. The village's location offers a perfect balance of countryside living and convenience, making it an attractive destination for those seeking a peaceful and picturesque lifestyle.





Barbers Row

Located in the picturesque village of Elmswell, this end-terraced home offers the perfect blend of convenience and comfort. With its close proximity to local amenities, reputable schools, and efficient travel links, this property provides an ideal living space for families and professionals alike, and is perfect for first time buyers or investors.

As you step into this inviting home, you are greeted by an entrance hall, which serves as the central hub of the main floor, with doors leading to both the living room and the kitchen. The kitchen boasts ample space for appliances and a cooker, and is equipped with a range of wall and base units, complemented by roll-top work surfaces. A built-in cupboard offers additional storage, making organisation a breeze.

The living room is perfect for relaxation and entertainment. It features French doors that open to the rear garden, allowing natural light to flood the room and providing a seamless transition between indoor and outdoor living. From here, a staircase leads to the first floor.

The first floor landing is both functional and convenient, featuring another built-in cupboard with access to the loft. This level comprises two bedrooms, each equipped with built-in wardrobes to cater to your storage needs.

The bathroom is fitted with a modern three-piece suite, providing a space for relaxation and personal care.

The property boasts an enclosed rear garden, bordered by a fence for privacy and security. A side access adds convenience, while the garden's hosting patio area is perfect for outdoor dining, barbecues, and enjoying the fresh air.

Outside, the property offers two resident parking spaces, ensuring that parking is never a concern for you or your guests.



Accommodation

Entrance Hall

Part glazed front door, doors to living room and kitchen, carpeted flooring.

Kitchen

Windows to front and side, fitted with a range of wall and base units with roll top work surfaces, stainless steel single sink with drainer and mixer tap, space for cooker with extractor over and space for appliances, built in cupboard, radiator and vinyl flooring.

Living Room

Window to side and French doors to rear, stairs to first floor, coved ceiling, radiator, dado rail and carpeted flooring.

First Floor Landing

Window to front, access to loft, built in cupboard, radiator and carpeted flooring.

Bedroom One

Window to rear, built in wardrobe, coved ceiling, radiator and carpeted flooring.

Bedroom Two

Window to front, built in wardrobe, coved ceiling, radiator and carpeted flooring.

Bathroom

Frosted window to front, fitted with a suite comprising a panelled bath with shower over and screen, vanity sink with mixer tap and low level wc, coved ceiling, extractor fan, radiator and vinyl flooring.

Outside

Rear Garden

Fence enclosed with side access gate and patio area.



view this property online williamhbrown.co.uk/Property/SMK105476



welcome to

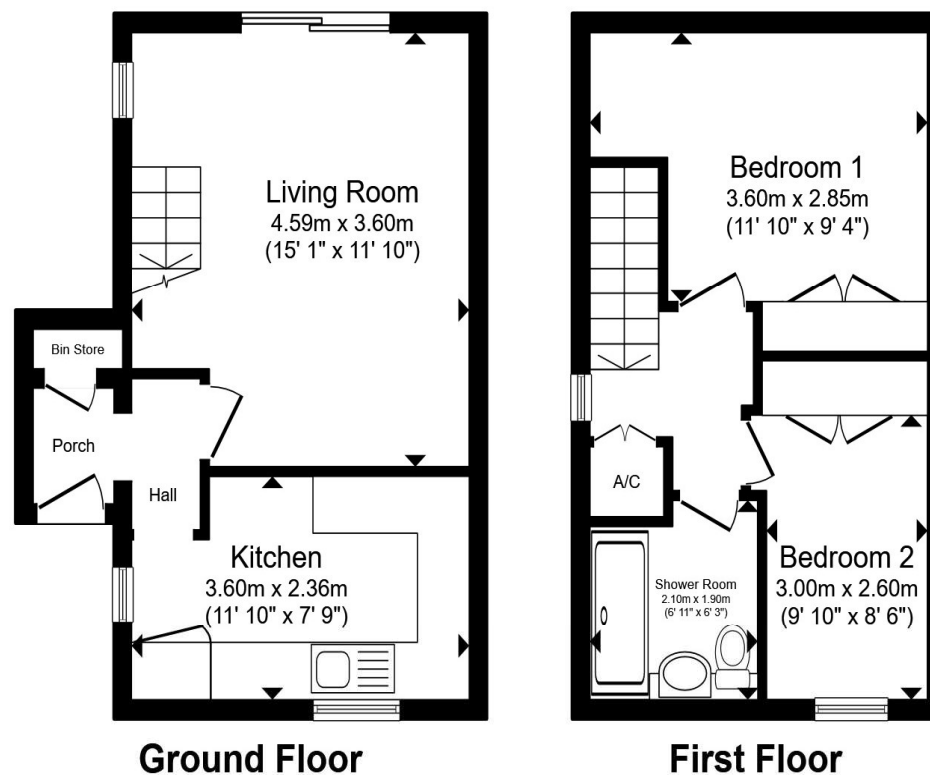
Barbers Row, Elmswell BURY ST. EDMUNDS

- Sale by Modern Auction (T&Cs apply)
- Subject to an undisclosed Reserve Price
- Buyers fees apply
- End-terraced home
- Two bedrooms with built in wardrobes

Tenure: Freehold EPC Rating: C
Council Tax Band: B

guide price

£190,000



Total floor area 55.6 m² (599 sq.ft.) approx

This floor plan is for illustrative purposes only. It is not drawn to scale. Any measurements, floor areas (including any total floor area), openings and orientation are approximate. No details are guaranteed, they cannot be relied upon for any purpose and they do not form part of any agreement. No liability is taken for any error, omission or misstatement. A party must rely upon its own inspection(s). Powered by www.propertybox.io



view this property online williamhbrown.co.uk/Property/SMK105476



Property Ref:
SMK105476 - 0004

1. MONEY LAUNDERING REGULATIONS Intending purchasers will be asked to produce identification documentation at a later stage and we would ask for your co-operation in order that there is no delay in agreeing the sale. 2. These particulars do not constitute part or all of an offer or contract. 3. The measurements indicated are supplied for guidance only and as such must be considered incorrect. Potential buyers are advised to recheck measurements before committing to any expense. 4. We have not tested any apparatus, equipment, fixtures or services and it is in the buyers interest to check the working condition of any appliances. 5. Where an EPC, or a Home Report (Scotland only) is held for this property, it is available for inspection at the branch by appointment. If you require a printed version of a Home Report, you will need to pay a reasonable production charge reflecting printing and other costs. 6. We are not able to offer an opinion either written or verbal on the content of these reports and this must be obtained from your legal representative. 7. Whilst we take care in preparing these reports, a buyer should ensure that his/her legal representative confirms as soon as possible all matters relating to title including the extent and boundaries of the property and other important matters before exchange of contracts.

William H Brown is a trading name of Sequence (UK) Limited which is registered in England and Wales under company number 4268443. Registered Office is Cumbria House, 16-20 Hockliffe Street, Leighton Buzzard, Bedfordshire, LU7 1GN. VAT Registration Number is 500 2481 05.


william h brown



01449 614459



stowmarket@williamhbrown.co.uk



10 Wilkes Way, STOWMARKET, Suffolk, IP14
1DE



williamhbrown.co.uk