



Merafield Drive, Plympton PL7 1TP

welcome to

Merafield Drive, Plympton

*** NO CHAIN ***

A fantastic opportunity to purchase this THREE BEDROOM SEMI-DETACHED home which benefits from a GARAGE and DRIVEWAY for multiple vehicles, a LEVEL rear garden and within a POPULAR location. This property has POTENTIAL TO IMPROVE and is coming to market with NO CHAIN!



Entrance Hall

Double glazed door entrance, stairs to first floor, door to lounge and an electric heater.

Lounge

Double glazed window to front elevation, electric fireplace with surround and door to kitchen/diner.

Kitchen/Diner

Wall and base units with an integrated oven and gas hob, space for an undercounter fridge, dining table and chairs with a door to the side garden.

First Floor Landing

Doors to all three bedrooms and shower room, loft access and double glazed window to side elevation.

Bedroom 1

Double glazed window to front elevation to front elevation with a fitted wardrobe, electric heater and dressing table.

Bedroom 2

Double glazed window to rear elevation, electric heater and fitted wardrobe.

Bedroom 3

Double glazed window, cupboard units and bath which was placed for previous use although possible to remove.

Shower Room

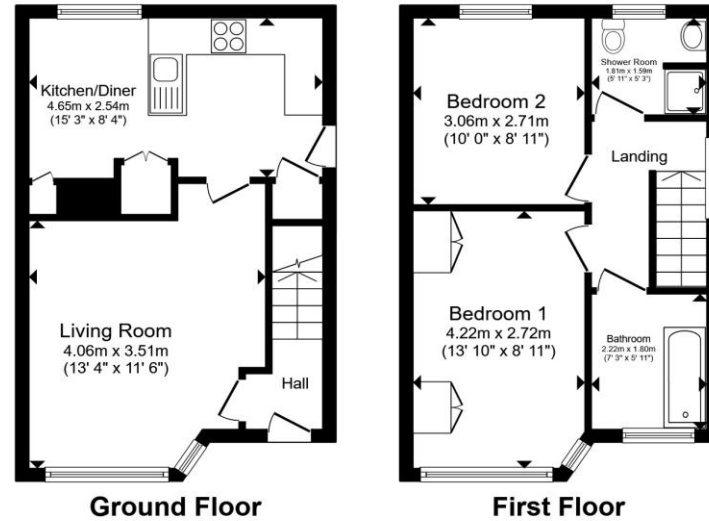
Electric shower cubicle, WC, vanity sink and double glazed obscure window to rear elevation.

Front Garden

Sloped driveway for multiple vehicles down to the single garage, low maintenance front garden mostly chippings with shrubs and steps down to the side door but also a side door leading to the kitchen and gate to the rear garden.

Rear Garden

A level lawned rear garden with a central pathway leading to a patio seating area to the rear.



Total floor area 65.6 m² (707 sq.ft.) approx

This floor plan is for illustrative purposes only. It is not drawn to scale. Any measurements, floor areas (including any total floor area), openings and orientation are approximate. No details are guaranteed, they cannot be relied upon for any purpose and they do not form part of any agreement. No liability is taken for any error, omission or misstatement. A party must rely upon its own inspection(s). Powered by www.propertybox.io



view this property online fox-and-sons.co.uk/Property/PYP104621



welcome to

Merafield Drive, Plympton

- Potential To Improve
- Garage
- Driveway For Multiple Vehicles
- No Chain
- Level Rear Garden

Tenure: Freehold EPC Rating: F
Council Tax Band: B

offers over

£240,000



Please note the marker reflects the
postcode not the actual property

view this property online fox-and-sons.co.uk/Property/PYP104621



Property Ref:
PYP104621 - 0008

1. MONEY LAUNDERING REGULATIONS Intending purchasers will be asked to produce identification documentation at a later stage and we would ask for your co-operation in order that there is no delay in agreeing the sale. 2. These particulars do not constitute part or all of an offer or contract. 3. The measurements indicated are supplied for guidance only and as such must be considered incorrect. Potential buyers are advised to recheck measurements before committing to any expense. 4. We have not tested any apparatus, equipment, fixtures or services and it is in the buyers interest to check the working condition of any appliances. 5. Where an EPC, or a Home Report (Scotland only) is held for this property, it is available for inspection at the branch by appointment. If you require a printed version of a Home Report, you will need to pay a reasonable production charge reflecting printing and other costs. 6. We are not able to offer an opinion either written or verbal on the content of these reports and this must be obtained from your legal representative. 7. Whilst we take care in preparing these reports, a buyer should ensure that his/her legal representative confirms as soon as possible all matters relating to title including the extent and boundaries of the property and other important matters before exchange of contracts.


fox & sons



01752 344349



plympton@fox-and-sons.co.uk



143 Ridgeway, Plympton, PLYMOUTH, Devon,
PL7 2HJ



fox-and-sons.co.uk