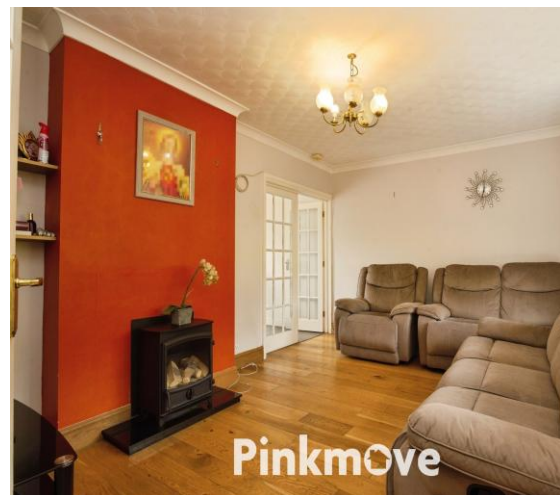




Shakespeare Crescent, Guide Price £260,000 - £270,000

- Guide Price: £260,000 - £270,000
- Five bedrooms
- Generous rear garden with patio
- Semi-detached property
- Spacious and versatile layout
- Great family home with potential
- EPC Rating: D



 5  1  2

Pinkmove

01633 746088
team@pinkmove.co.uk



About the property

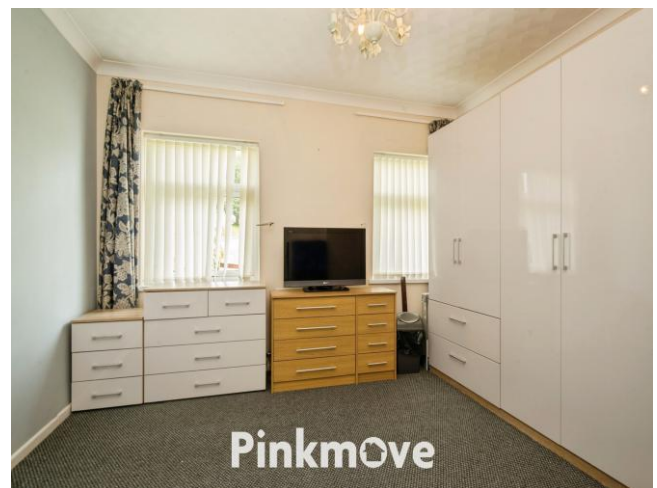
Situated on the sought-after Shakespeare Crescent, this spacious five-bedroom semi-detached property offers versatile living accommodation and plenty of potential, making it an ideal family home.

The property benefits from a generous layout throughout, featuring a bright entrance porch leading into the main hallway, a good-sized lounge, and a practical kitchen with ample storage and workspace. The flexible layout provides four well-proportioned bedrooms, perfect for growing families or those needing additional home office space.

To the rear, the property boasts a large, enclosed garden with a spacious patio area, ideal for outdoor dining and entertaining, along with further lawn space bordered by mature greenery. The elevated position provides a pleasant outlook and a sense of privacy.

Located in a popular residential area, the property is conveniently close to local amenities, schools, and transport links, offering easy access into Newport city centre and beyond.

Viewing is highly recommended to appreciate the space and potential this home has to offer.





Accommodation

Lounge

Kitchen

Dining Room

Toilet

Bedroom 3

Bedroom 1

Bedroom 5

Bedroom 4

Bedroom 2

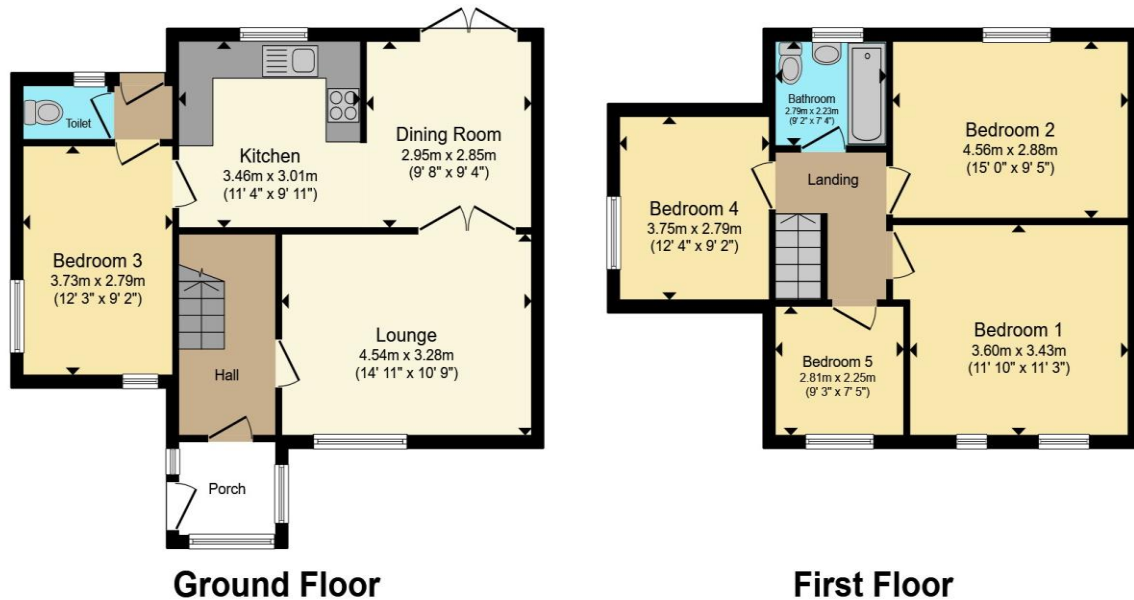
Bathroom

01633 746088

team@pinkmove.co.uk

Pinkmove

Floorplan



Total floor area 100.0 sq.m. (1,077 sq.ft.) approx

This floor plan is for illustrative purposes only. It is not drawn to scale. Any measurements, floor areas (including any total floor area), openings and orientation are approximate. No details are guaranteed, they cannot be relied upon for any purpose and they do not form part of any agreement. No liability is taken for any error, omission or misstatement. A party must rely upon its own inspection(s). Powered by www.localagent.com

Pinkmove

Important Information

Note while we endeavour to make our sales details accurate and reliable, if there is any point which is of particular interest to you, please contact the office and we will be pleased to confirm the position for you. We have not personally tested any apparatus, equipment, fixtures, fittings or services and cannot verify they are in working order or fit for their purposes. Nothing in these particulars is intended to indicate that carpets or curtains, furnishings or fittings, electrical goods (whether wired or not). Gas fires or light fittings or any other fixtures not expressly included form part of the property offered for sale. This computer generated Floorplan, if applicable, is intended as a general guide to the layout and design of the property. It is not to scale and should not be relied upon for dimensions. Tenure: We cannot confirm the tenure of the property as we have not had access to the legal documents. The buyer is advised to obtain verification from their solicitor or surveyor.

Peter Alan Limited is registered in England and Wales under company number 2073153, Registered Office is Cumbria House, 16-20 Hockliffe Street, Leighton Buzzard, Bedfordshire, LU7 1GN. VAT Registration Number is 500 2481 05. For activities relating to regulated mortgages and non-investment insurance contracts, Peter Alan Limited is an appointed representative of Connells Limited which is authorised and regulated by the Financial Conduct Authority. Connells Limited's Financial Services Register number is 302221. Most buy-to-let

