



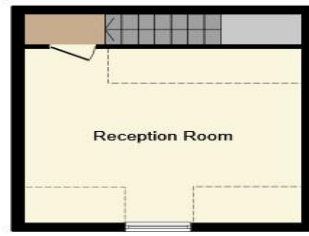
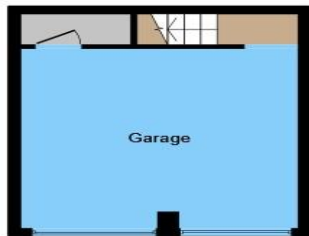
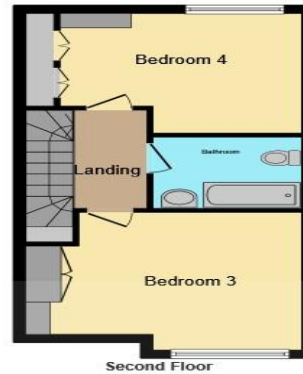
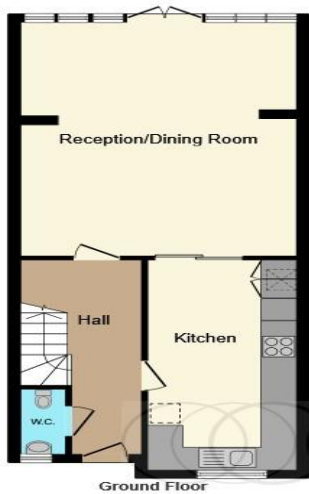
**Rickmansworth Road, Watford, WD18 7JG**

**welcome to**

**Rickmansworth Road, Watford**

A spacious four-bedroom family home on Rickmansworth Road featuring a modern kitchen, en-suite master, private garden and a garage with a self-contained room, close to Watford Station and Cassiobury Park and located within the catchment of Watford Grammar schools. Call us today to view!





brown & merry

### Entrance

### Reception/Dining Room

20' x 15' 6" ( 6.10m x 4.72m )

### Kitchen

18' x 8' ( 5.49m x 2.44m )

### Bedroom 1

14' 9" x 11' 1" ( 4.50m x 3.38m )

### En-Suite

5' 10" x 3' 5" ( 1.78m x 1.04m )

### Bedroom 2

15' 5" x 10' 6" ( 4.70m x 3.20m )

### Bedroom 3

15' 6" x 11' 7" ( 4.72m x 3.53m )

### Bedroom 4

13' 6" x 10' 6" ( 4.11m x 3.20m )

### Bathroom

8' x 6' 1" ( 2.44m x 1.85m )

### Outbuilding- Garage

15' 6" x 15' 5" ( 4.72m x 4.70m )

### Outbuilding- First Floor

16' 11" x 14' 11" ( 5.16m x 4.55m )

### Agent's Note

We have been unable to verify and are limited to the material information that relates to this property. If there is any point which is of particular importance to you, please contact the branch and we will endeavour to check for you, especially if you are contemplating travelling some distance to view the property.

This floor plan is for illustrative purposes only. It is not drawn to scale. Any measurements, floor areas (including any total floor area), openings and orientation are approximate. No details are guaranteed, they cannot be relied upon for any purpose and they do not form part of any agreement. No liability is taken for any error, omission or misstatement. A party must rely upon its own inspection(s). Powered by [www.focalagent.com](http://www.focalagent.com)

welcome to

## Rickmansworth Road, Watford

- Four Bedroom Town House
- Modern Fitted Kitchen
- Four Double Bedrooms
- Garage With Self Contained Room Above
- Two Bathrooms & Ground Floor W.C

Tenure: Freehold EPC Rating: C

Council Tax Band: F

# £649,950



Please note the marker reflects the postcode not the actual property

[view this property online](https://www.brownandmerry.co.uk/Property/WAF104568) [brownandmerry.co.uk/Property/WAF104568](https://www.brownandmerry.co.uk/Property/WAF104568)



Property Ref:  
WAF104568 - 0010

1. MONEY LAUNDERING REGULATIONS Intending purchasers will be asked to produce identification documentation at a later stage and we would ask for your co-operation in order that there is no delay in agreeing the sale. 2. These particulars do not constitute part or all of an offer or contract. 3. The measurements indicated are supplied for guidance only and as such must be considered incorrect. Potential buyers are advised to recheck measurements before committing to any expense. 4. We have not tested any apparatus, equipment, fixtures or services and it is in the buyers interest to check the working condition of any appliances. 5. Where an EPC, or a Home Report (Scotland only) is held for this property, it is available for inspection at the branch by appointment. If you require a printed version of a Home Report, you will need to pay a reasonable production charge reflecting printing and other costs. 6. We are not able to offer an opinion either written or verbal on the content of these reports and this must be obtained from your legal representative. 7. Whilst we take care in preparing these reports, a buyer should ensure that his/her legal representative confirms as soon as possible all matters relating to title including the extent and boundaries of the property and other important matters before exchange of contracts.

Brown & Merry is a trading name of Sequence (UK) Limited which is registered in England and Wales under company number 4268443, Registered Office is Cumbria House, 16-20 Hockliffe Street, Leighton Buzzard, Bedfordshire, LU7 1GN. VAT Registration Number is 500 2481 05.

 brown & merry



**01923 248861**



[watford@brownandmerry.co.uk](mailto:watford@brownandmerry.co.uk)



104 The Parade, WATFORD, Hertfordshire,  
WD17 1AW



[brownandmerry.co.uk](https://www.brownandmerry.co.uk)